



Immaculate Family Oasis in West Goulburn!



4



2



8

12 Faithfull Street, Goulburn

Sold for \$1,125,000 (Oct 31, 2024)

Discover the perfect blend of modern comfort and timeless charm nestled in sought after West Goulburn. This beautifully renovated four-bedroom, two-bathroom, double-brick residence sits on a generous 2023 sqm block with subdivision potential (STCA).

With ducted reverse cycle air conditioning for year-round comfort, the home has two separate living areas plus a cosy dining room next to one of the two fireplaces. High ceilings and beautiful light filled rooms throughout, an abundance of storage and huge stacking doors opening onto a large deck for seamless indoor-outdoor entertaining making this a perfect family home. The kids will love roaming around outside in the gardens complete with raised vegetable patches and fruit trees.

The backyard has the space for any endeavour. With a combination of beautifully established gardens, a huge area of vacant land and 3 x large sheds with extensive storage and workspaces, accessible through the drive-through double garage with extra height automatic roller doors.

Walking distance to West Goulburn Schools, Trinity College & TAFE.

| | |
|----------------|-------------|
| Property ID: | L24660192 |
| Property Type: | House |
| Garages: | 8 |
| Land Area: | 2023.67 sqm |

Zeb Alaia

0408 662 944

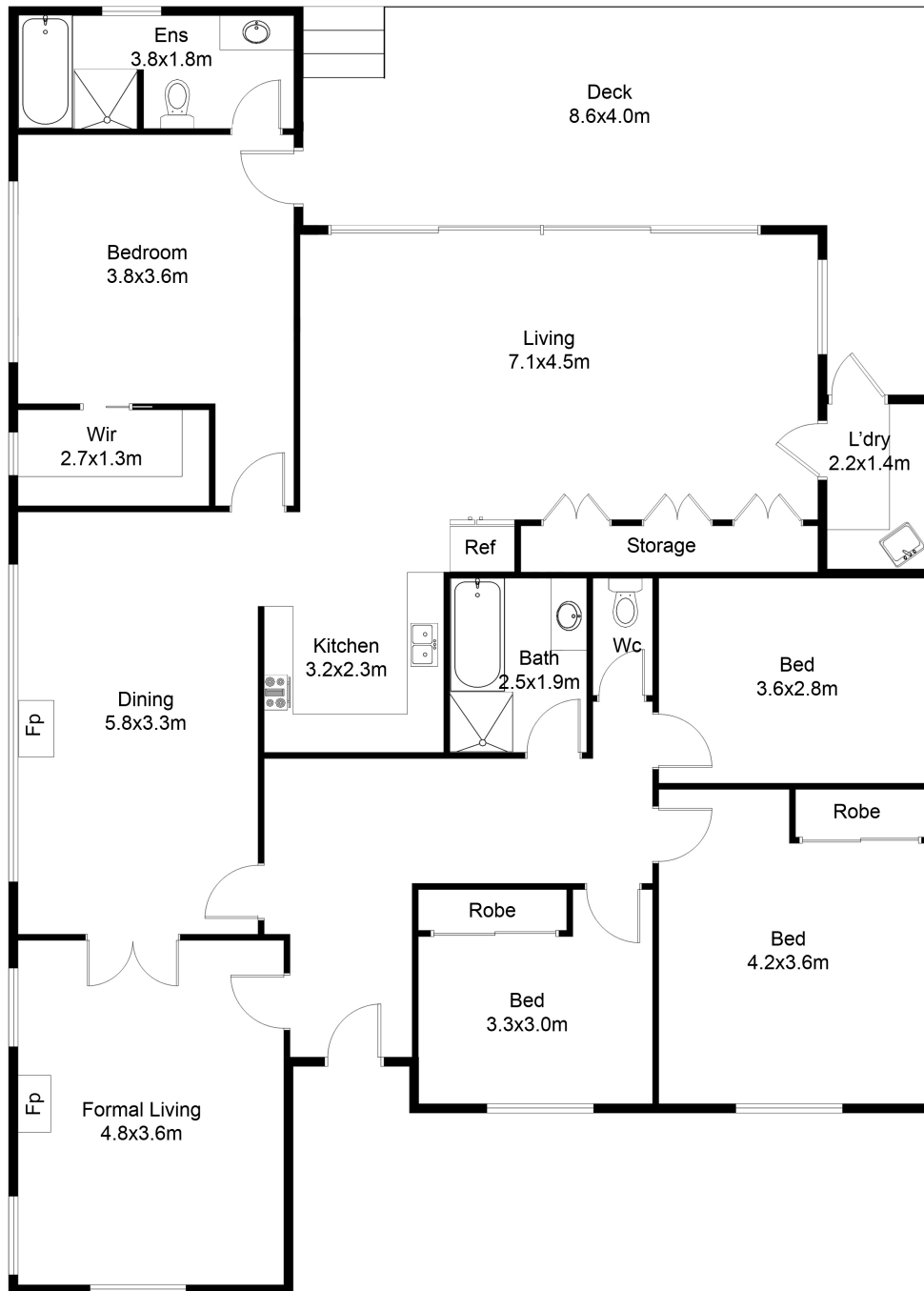
Zeb.Alaia@goulburn.rh.com.au

Your inspection of the property will not disappoint!

For more information or to schedule a private viewing, contact us today.

Key Features:

- Four generous double-sized bedrooms
- Master bedroom with luxury ensuite and walk-in robe
- Built-in wardrobes
- Ducted reverse cycle air conditioning plus two fireplaces
- Two separate living areas plus dining
- Main bathroom with spa and separate toilet
- Entertaining deck
- Double garage with drive-through extra height automatic roller doors
- 3 x versatile steel sheds with extensive storage and workspaces
- Established gardens & area of vacant land



FLOOR PLAN

This floor plan including furniture, fixture measurements and dimensions are approximate and for illustrative purposes only. All enquiries must be directed to the agent, vendor or party representing this floor plan.

12 Faithful Street