



Welcome Home to Comfort & Convenience!

Raine&Horne



Raine&Horne



Raine&Horne



4



2



2

1 Mcalroy Place, Goulburn

Sold for \$735,000 (Dec 11, 2024)

Nestled on a peaceful corner block location, this delightful brick and tile residence, constructed in 2015, invites you to experience modern living. Boasting a perfect blend of style, space, and functionality, this home is a haven for those seeking comfort and convenience.

Key Features:

- Four carpeted bedrooms generously appointed with built-ins, offering ample storage space for your convenience.
- Luxury of the master bedroom featuring an ensuite and a walk-in robe, providing a serene sanctuary to unwind after a long day.
- Experience year-round comfort with ducted heating seamlessly integrated throughout the home, ensuring warmth during chilly evenings.
- Relaxation in the main bathroom, complete with a separate bath and shower, as well as a toilet, providing the perfect retreat for ultimate pampering.
- Embrace outdoor living in the low maintenance backyard, complete with a catchment tank & pump, ideal for sustainable living and effortless gardening.

Property ID: L27588047

Property Type: House

Building / Floor Area: 144

Garages: 2

Land Area: 495.0 sqm

Zeb Alaia

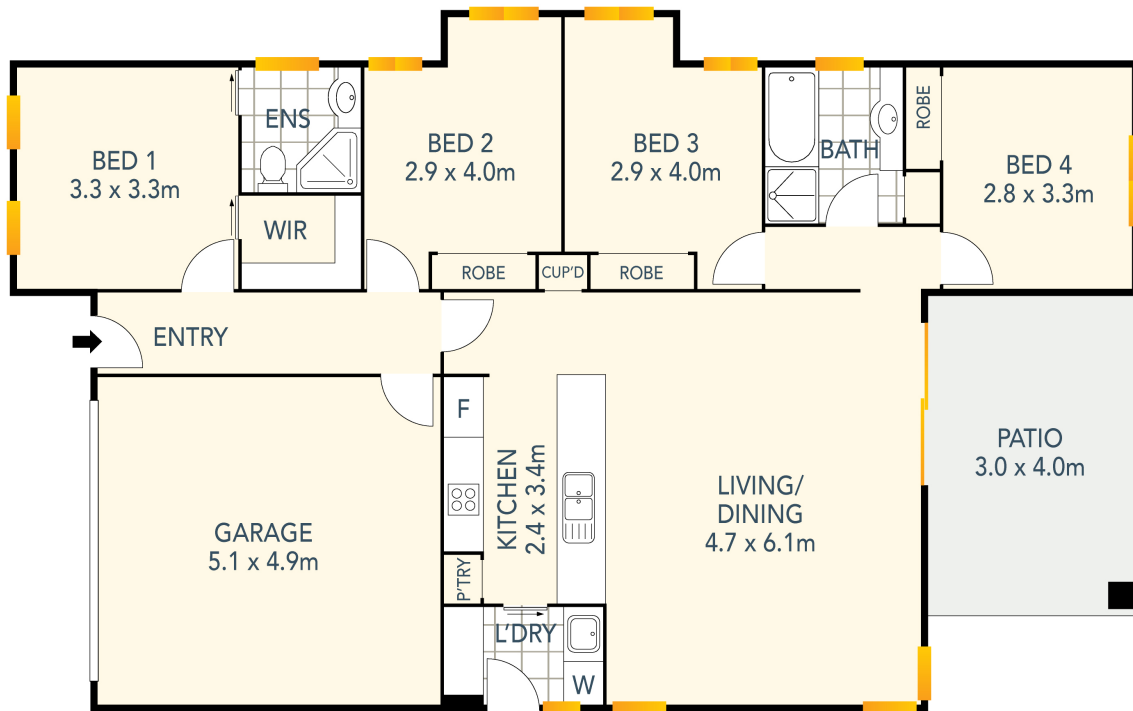
0408 662 944

Zeb.Alaia@goulburn.rh.com.au

- Benefit from a gas hot water system + gas bayonet under the alfresco area, accompanied by power points, offering efficiency and convenience.
- Discover culinary delights in the well-appointed kitchen featuring a dishwasher and gas cooktop, perfect for preparing gourmet meals with ease.
- Park with ease in the remote double garage offering both internal & external access, providing security and convenience.

Perfectly suited for first home buyers, this residence presents an excellent opportunity to enter the property market and create lasting memories in a welcoming community. Don't Miss Out!

Currently tenanted at \$550PW



DISCLAIMER: Plans are artist's impressions only and intended as an approximate guide. Plans may not be drawn to scale.