



**Excellent Value!**



4



2



2

## 112 Gibson Street, Goulburn

**Sold for \$650,000 (Aug 05, 2024)**

Welcome to your new home, where comfort meets convenience. This spacious brick residence offers everything your family desires and more.

### Key Features:

- Four bedrooms: Including a luxurious master bedroom complete with an ensuite, alongside all bedrooms featuring built-in wardrobes ensuring ample storage space for everyone.
- Expansive living spaces: Enjoy the generous proportions of the separate lounge and dining rooms, perfect for entertaining guests or unwinding with loved ones.
- Well-equipped kitchen: Discover a well-appointed kitchen, boasting ample storage and counter space, complimented by an additional family room that seamlessly flows into the enclosed entertaining area.
- Year-round comfort: Stay cozy during winter with gas heating, while relishing the comfort of split system air conditioning throughout the home during warmer months.
- Double garage: Convenience is key with the double garage offering internal access, making grocery unloading or rainy-day arrivals a breeze.

<b>Property ID:</b>	L970739
<b>Property Type:</b>	House
<b>Building / Floor Area:</b>	175
<b>Garages:</b>	2
<b>Land Area:</b>	738.0 sqm

**Zeb Alaia**

0408 662 944

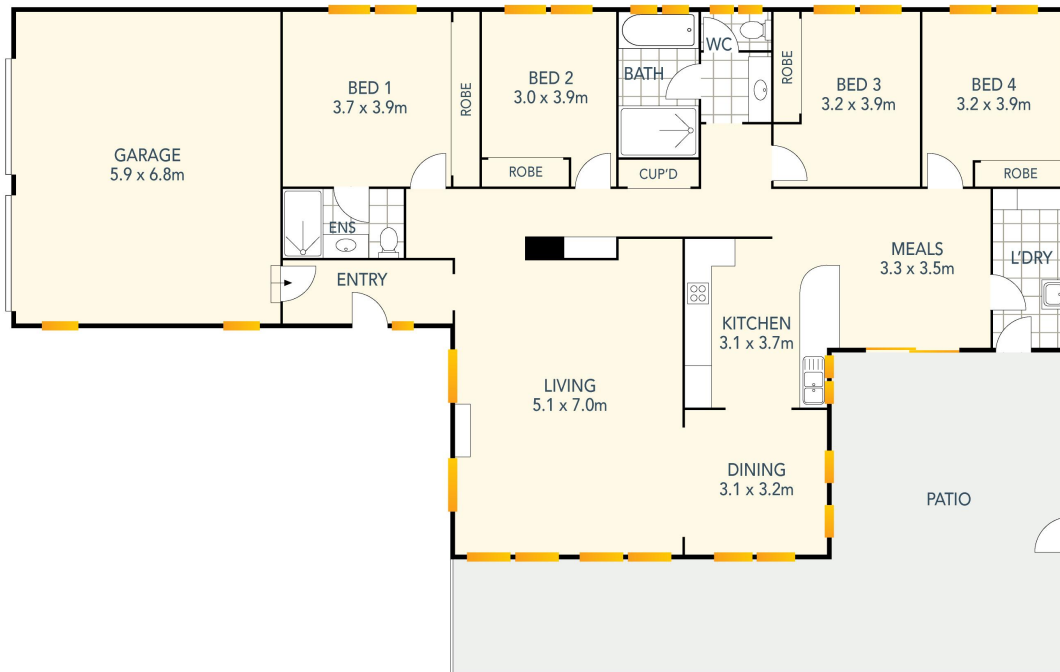
Zeb.Alaia@goulburn.rh.com.au

- Outdoor oasis: Step outside to your private sanctuary, featuring a fantastic undercover pergola area. Ideal for hosting barbecues, alfresco dining, or simply enjoying the fresh air in your own backyard retreat.

- Location Highlights:

Nestled in a sought-after locale, this residence is conveniently situated close to amenities including the Police Academy, Mulwaree High School, and childcare facilities. With everything you need at your fingertips, you'll love the ease of access to essential services and recreational activities.

Don't miss this opportunity to secure your family's dream home in a location that offers both convenience and comfort. Arrange your inspection today and make this your new address.



DISCLAIMER: Plans are artist's impressions only and intended as an approximate guide. Plans may not be drawn to scale.

112 Gibson Street, Goulburn, NSW 2580

Produced by **PATARAMA** STUDIOS  
Raine & Horne