



Modern Open Plan Living



2



1



2

1/19 Lomandra Drive, Blackmans Bay

Sold

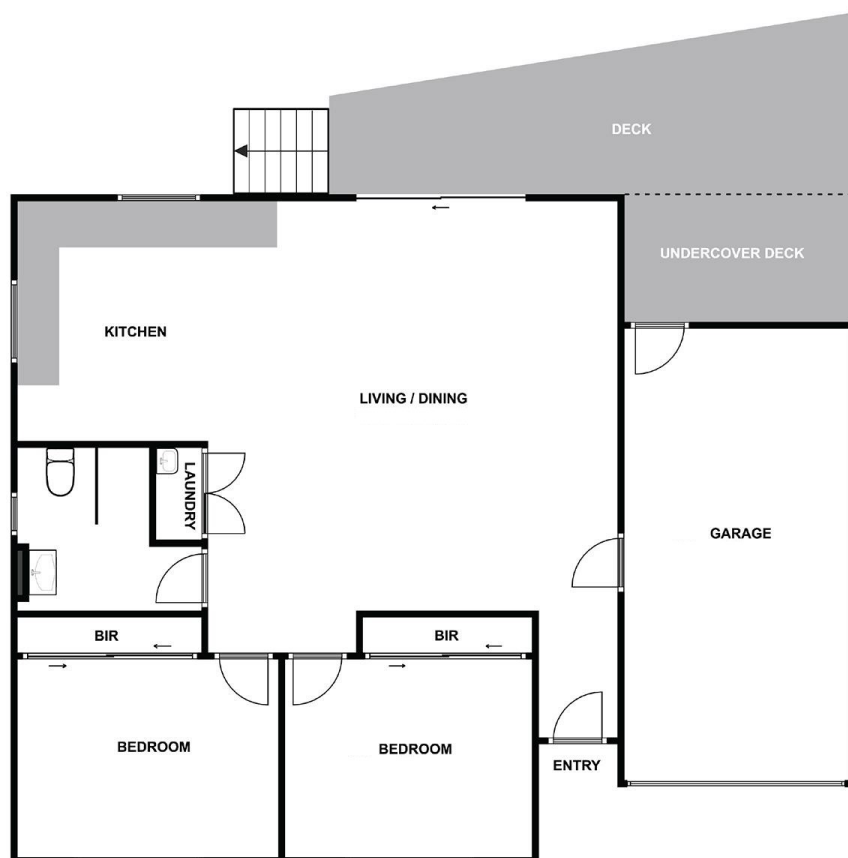
Just 4 years old, this well presented modern home faces north for all-day sun. The large open-plan living area with spectacular mountain views opens onto a good size deck which is a real sun-trap. Both bedrooms are double with build-ins. All windows are double glazed, and linked with the centrally located heat pump, creates a very warm home. The extra long garage provides additional storage space and features remote control garage door and internal access.

Property ID:	L27636016
Property Type:	Unit
Building / Floor Area:	103
Garages:	1
Open Parking:	1
Land Area:	261.0 sqm

Brian Williams

0418 120 661

brian.williams@kingston.rh.com.au



**Unit 1, 19 Lomandra Court,
Blackmans Bay TASMANIA
7052**

DISCLAIMER: These floorplans have not been prepared by a qualified architect or architectural draughting service and are meant to be used as an indicative guide only. All measurements and placement of walls, windows, doors and fittings are approximate and must not be relied on for accuracy or as a means of valuation. Interested prospective purchasers must satisfy themselves as to the layout of the property and structure by engaging at their own cost their own independent surveyor, architect or builder. Raine&Horne Kingston accepts no responsibility for errors or omissions in this floorplan. Buildings are not shown in their actual scale or positions in relation to each other.

Produced for Raine&Horne Kingston