



Splendid with Fabulous Water Views



3



1



1

8/30 Pearl Place, Blackmans Bay

Sold

Enjoying an extremely private position at the end of a quiet driveway, this split level, three bedroom, one bathroom unit in Blackmans Bay has a beguiling charm.

The unit has an almost Mediterranean ambience, due in part to the attractively tiled floors within the home complemented by fabulous views of the River Derwent.

Car parking for the unit is in a single vehicle carport and visitor parking is available nearby.

The home's entry is through the thoughtfully designed alfresco, which has a glazed window providing an all weather outdoor entertaining area and making the most of those views.

A sliding door takes you through from the alfresco into the lovely open-plan living room which features comfortable lounge and dining areas as well as an eye-catching kitchen.

This living space has an open ambience with the views out over the river providing an ever-changing backdrop for home life.

The kitchen is a galley style with many practical features including plenty of storage and preparation space, dishwasher, induction cooktop and pyrolytic oven.

Property ID: L3714787

Property Type: Unit

Building / Floor Area: 93

Carports: 1

Land Area: 154.0 sqm

Brendan Leung

0439 591 559

brendan.leung@kingston.rh.com.au

The dining area is perfectly positioned to allow diners to enjoy both a visual and a nutritional treat.

Just off the kitchen a doorway leads into the ground floor bedroom with built-ins, the current owner using this space as a delightful home office.

A short staircase leads up from the kitchen to the next level which contains two bedrooms, the laundry as well as the family bathroom with bath, toilet, vanity and walk-in shower.

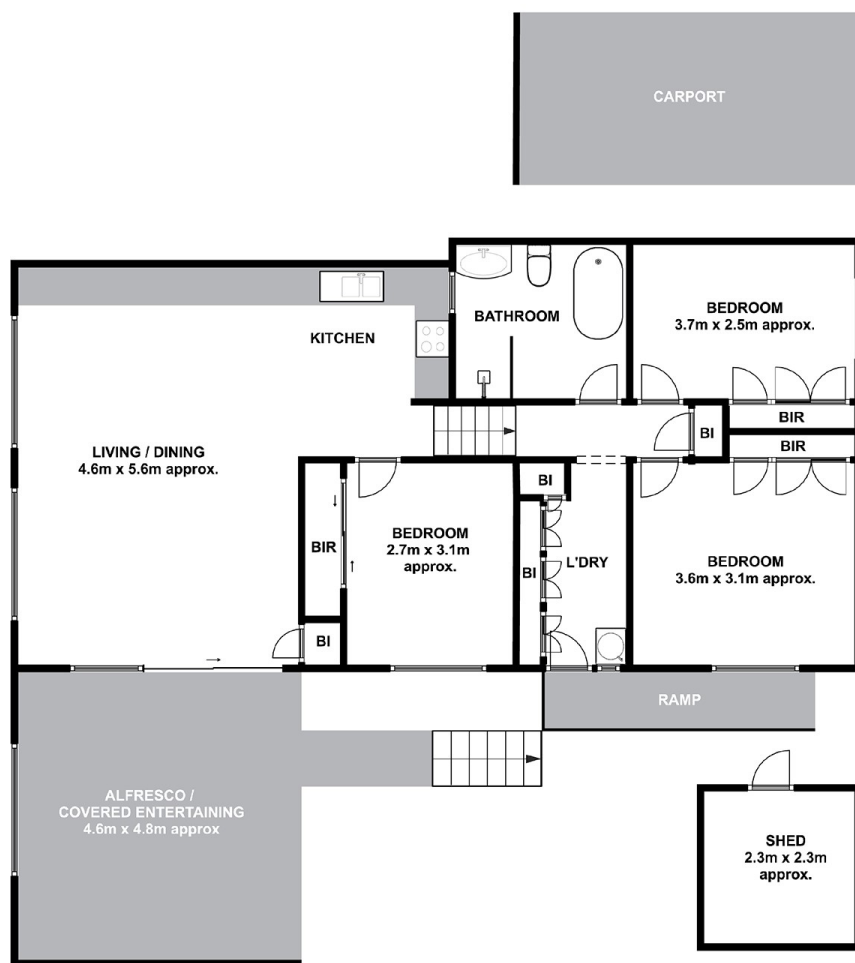
Both upstairs bedrooms have built-ins and retain the sense of privacy that the home enjoys.

The spacious laundry has great storage and outdoor access.

Adjacent to the property is open reserve which adds to the property's relaxing charm.

This part of Blackmans Bay is very popular being close to the local shopping centre as well as primary schools, public transport and the beautiful Blackmans Bay beach with its restaurants, cafés and white sands.

Residents of the Bay also enjoy convenient proximity to Kingston with its various shopping centres and services as well as the Hobart CBD which is about a 16 minute drive away.



**Unit 8, 30 Pearl Place,
Blackmans Bay TASMANIA 7052**

DISCLAIMER: These floorplans have not been prepared by a qualified architect or architectural draughting service and are meant to be used as an indicative guide only. All measurements and placement of walls, windows, doors and fittings are approximate and must not be relied on for accuracy or as a means of valuation. Interested prospective purchasers must satisfy themselves as to the layout of the property and structure by engaging at their own cost their own independent surveyor, architect or builder. Raine&Horne Kingston accepts no responsibility for errors or omissions in this floorplan. Buildings are not shown in their actual scale or positions in relation to each other.

Produced for Raine&Horne Kingston