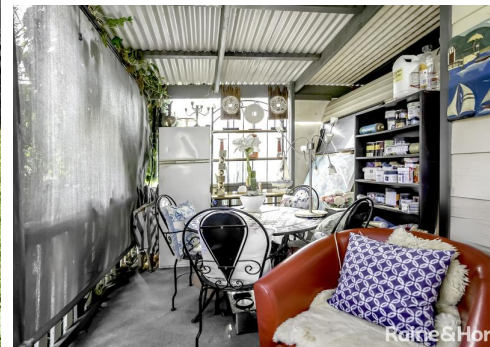




How's The Serenity !!



2



1



1

N4/4 Madsen Street, Hindmarsh Island

Sold for \$99,000 (Nov 27, 2023)

Fabulous affordable homey river- life living with green grass, green trees and a fresh sea breeze.

INDOOR FEATURES INCLUDE:

- Spacious lounge with heating and cooling
- Included is a sofa bed lounge and two single lounge chairs
- Bedroom with queen size bed
- The bedroom has new carpet & is also recently painted
- Large bathroom laundry combo including shower, toilet, vanity, mirror & tiled flooring.
- Inside the caravan section is the electric cooking kitchen with almost new fridge
- Dishwasher, dining space and open server to lounge
- At the rear is also the original caravan bed space with storage, just perfect for grandchildren

Property ID: L24414551

Property Type: House

Open Parking: 1

Brett Trimboli

0411 153 364

brett.trimboli@kp.rh.com.au

or guest.

OUTDOORS INCLUDES:

- Handy deck porch semi enclosed with café screens for privacy and weather control.
- Currently used for storage and outdoor cooking, perfect for a morning cuppa and an evening wine.
- An Eco-friendly Chromagen 170 litre hot water unit
- The cabin is surrounded by termite protection hardware installed to the ground
- A rain tank is also located at the rear of the cabin

The fully self contained cabin itself is located quietly to the end of the complex, overlooking lawn and pine trees. The Park mows the lawns every few weeks and as a resident you can enjoy all of the Park benefits like the swimming pool, playground, barbeque area, camp shed kitchen, occasional Community events and all of the local river and arts lifestyle from the Island itself out to Victor Harbor. Invite the extended family to come enjoy with you. Also available to share as a holiday site for slightly less site fees. Small dogs and cats allowed

*Jump into the Hindmarsh Island Caravan Park website and policies for a deeper understanding.



Cabin N4 - Hindmarsh Island Caravan Park

Approx Area m² | Living 47.68 | Verandah 10.44 | Total 58.12m²

This drawing is for illustration purposes only. All measurements are approximate only and information to be relied upon should be independently verified.