



SOLID FAMILY HOME IN TOP NEIGHBOURHOOD



3



1



3

15 Lexia Street, Muswellbrook

Sold for \$518,000 (Sep 11, 2024)

YOU'LL LOVE:

- Sought-after North Muswellbrook location
- Big entertaining deck for family BBQs
- Plenty of parking & storage

Nestled in the popular North Muswellbrook estate, this quality 3 bedroom home makes a lovely sanctuary for couples or small families to call home.

Featuring two large separate living areas together with a flowing design, there's plenty of space here to relax, entertain or cook up a storm to your hearts desire. A spotless classic kitchen occupies the heart of the home complete with dishwasher and electric cooking, whilst a spacious formal lounge area presents with air conditioning and room for any lounge suite of your choice.

Outdoors a big entertaining deck is a definite highlight where you can set up the BBQ and entertain with friends and family. A well sized fully fenced yard complements together with a double carport for easy in-and-out parking and a single garage for much needed storage

Property ID: L24653661

Property Type: House

Garages: 1

Carports: 2

Carolyn Wallis-Tomlins

0488 061 192

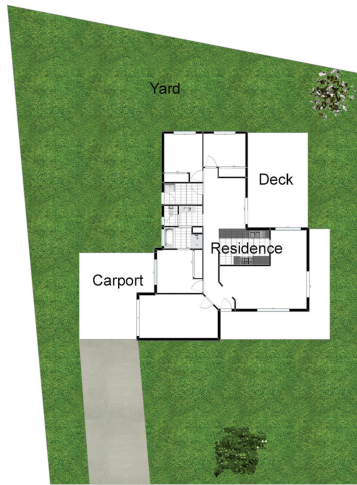
carolyn.wallistomlins@kurri.rh.com.au

space. There's also a big front verandah to enjoy where you can sit and watch the world go by.

Positioned in one of Muswellbrook's most desired neighbourhoods, this quality home is located close to the main street, local bus stops and parklands for the ultimate family friendly lifestyle.

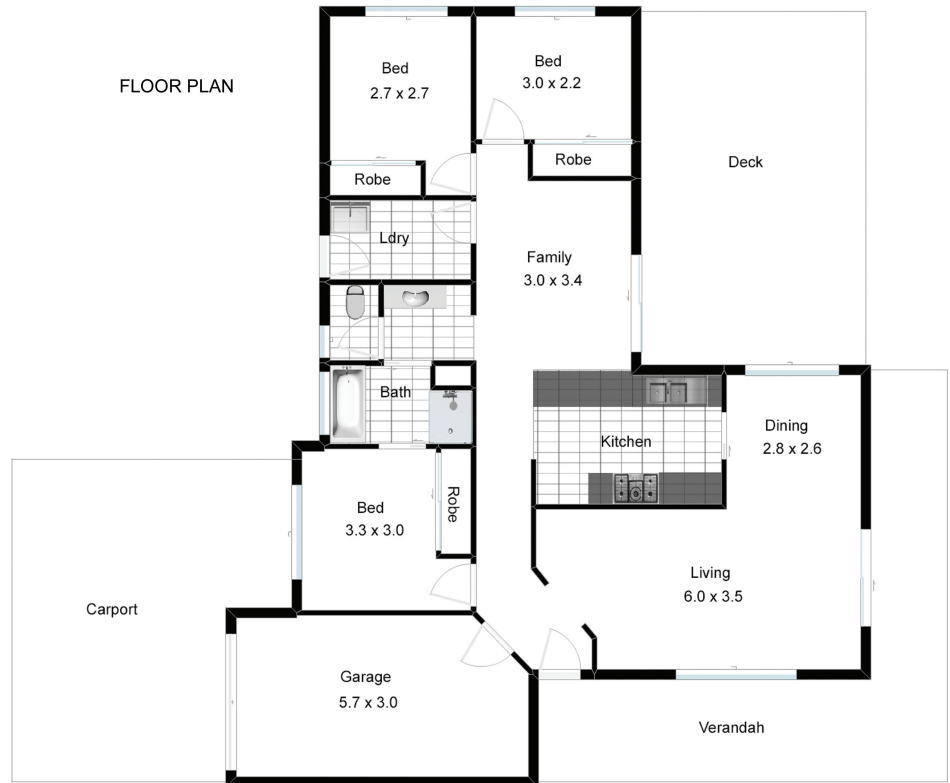
- Brick & tile 3 bedroom home
- Good sized 691m2 block
- Lounge/dining area with reverse cycle air conditioning
- Bright & fresh kitchen with dishwasher
- Informal dining area
- Main bedroom with built-in robe and access to main bathroom
- Two further bedrooms with built-in robes
- Internal laundry
- Spacious entertaining deck
- Fenced backyard
- Single garage and double carport
- Small lawn locker
- Currently leased \$490 per week

Disclaimer: All information contained herein is gathered from sources we deem to be reliable. However, we cannot guarantee its accuracy and interested persons should rely on their own enquiries.



SITE PLAN (not to scale)

FLOOR PLAN



IMPORTANT INFORMATION

Dimensions & Areas are a guide and approximate only
Direction of North is an Indication Only

15 Lexia St Muswellbrook

