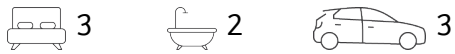




A Captivating Cedar Homestead with Enchanting Gardens and Rustic Elegance!



1 Glen Street, Tylden

Sold

Nestled amidst well-established park-like gardens, this charming cedar homestead is a testament to timeless beauty and country comfort. Immerse yourself in the charm of wrap-around veranda's that welcome you to a secluded retreat.

Offering 3 generous size bedrooms + study, the master bedroom stands out as a true sanctuary with a renovated ensuite, bay window, and a walk-in robe/dressing room-a dreamy haven for parents. The open-plan layout seamlessly connects a well-appointed kitchen with a walk-in pantry to a dining room and living area. For more intimate gatherings, a separate formal lounge provides an elegant escape.

Cathedral ceilings, timber features and exposed beams add a touch of grandeur, creating an airy ambiance throughout the home. Comforted by a wood fire coonara and ceiling fans for the warmer months, plus Nobo wall heaters in all bedrooms.

Your vehicles find shelter in the double carport, while a workshop/garage offers two enclosed areas-one for storage and the other housing the bore pump and additional storage. Embrace your green thumb with an extra shed, garden shed, vegetable gardens, raised garden beds, and a hot house, cultivating your own haven of tranquility.

Water woes are non-existent, thanks to a 90,000-liter tank, a reliable bore, and 5 zoned

Property ID:	L25368945
Property Type:	House
Garages:	3
Land Area:	1.1 hectares

Ken Grech  
0418 509 710  
ken.grech@gisborne.rh.com.au

watering systems on timers nurturing the lush surroundings. Elevate your sustainability with a 2-kilowatt solar system, boasting 10 panels to power your retreat with efficiency.

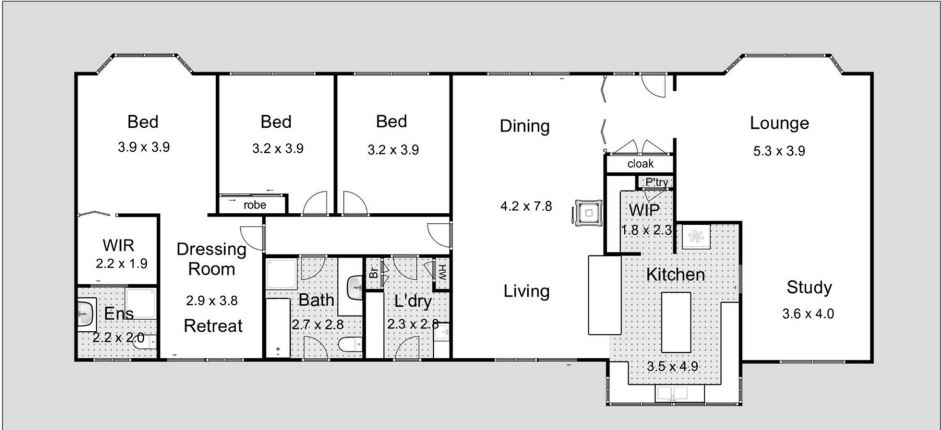
Spanning 1.1 hectares (2.7 acres approximately), this haven is strategically located:

- 9.89 km to Kyneton
- 11.3 km to Woodend
- 70 km to Melbourne

Enjoy the convenience and close proximity to Tylden primary, post office, general store, and service station.

This property isn't just a home; it's a symphony of nature, comfort, and functionality. Seize the opportunity to make this homestead yours—a haven where every detail whispers serenity.

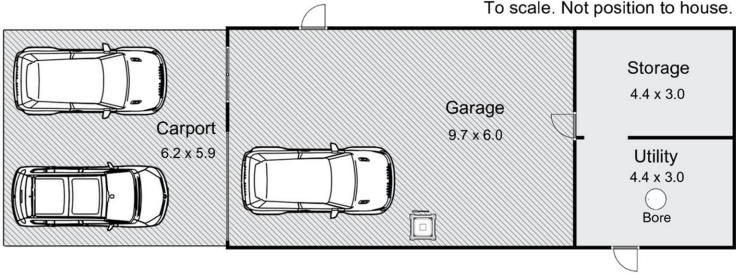
Contact our invested team today!



Living area = approx 192m<sup>2</sup>



1 Glen Street, Tylden



Whilst every attempt has been made to ensure the accuracy of the floor plan contained here, measurements of doors, windows, rooms and any other items are approximate and no responsibility is taken for any error, omission, or mis-statement. This plan is for illustrative purposes only and should be used as such by any prospective purchaser. The services, systems and appliances shown have not been tested and no guarantee as to their operability or efficiency can be given.

