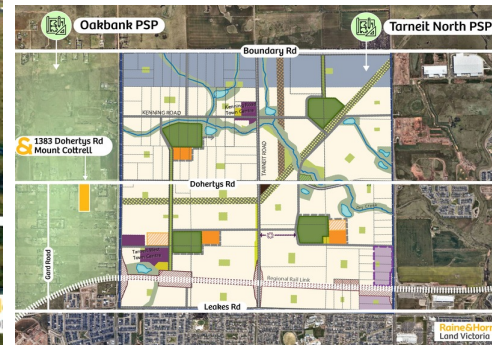




Future Development Opportunity in Oakbank PSP 1088



1383 Dohertys Road, Mount Cottrell

Contact Agent

Raine & Horne Land Victoria is pleased to offer this strategic land banking and Development opportunity located in one of Melbourne's most rapidly expanding growth corridors

Key features include:

- Total land area: 4 hectares (10 acres approx.)
- Zoned: Urban Growth Zone under Oakbank PSP 1088
- Ideally positioned to key rail and arterial roads including Princes and Western Freeways
- Closely positioned to multiple areas within the Precinct Structure Plan
- Excellent educational, medical, retail and financial facilities within proximity
- Located at short distance from Riverdale Shopping Centre, proposed Davis Road Train Station, Glen Wattle Mosque, Sikh Temple and Hindu Temple
- 30 km from Melbourne CBD, 35 km approx to Melbourne Airport

Property ID: L22321731

Property Type: AcreageSemi-rural

Garages: 2

Land Area: 10.0 acres

Harvir Hans
0421 452 651
h.hans@landvictoria.rh.com.au

Interested parties should conduct their own Due Diligence prior to any offers. For more please contact Harvir Hans 0421 452 651 or Talwinder Dahiya 0435 486 458

Due Diligence Checklist -

<http://www.consumer.vic.gov.au/duediligencechecklist>