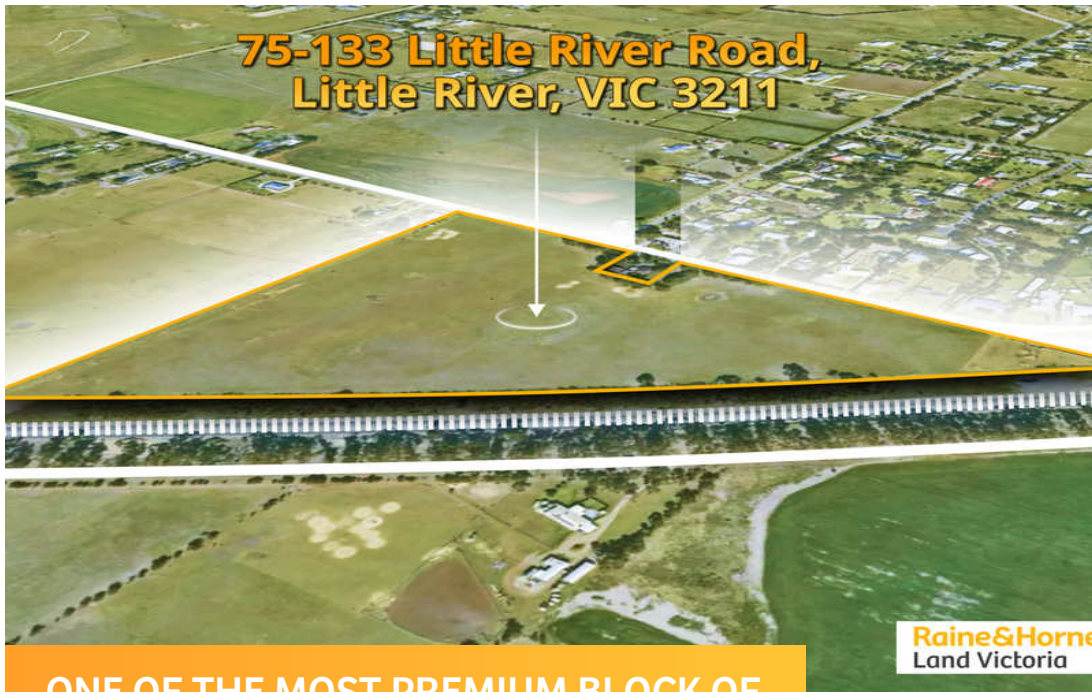
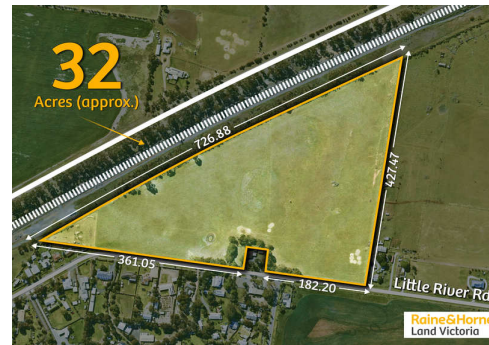
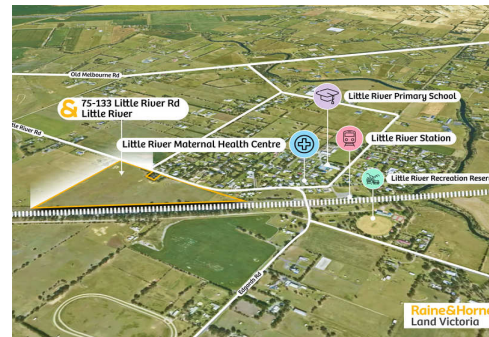


## 75-133 Little River Road, Little River, VIC 3211



**ONE OF THE MOST PREMIUM BLOCK OF  
LITTLE RIVER!!**



## 75-133 Little River Road, Little River

### Sold

Raine & Horne Land Victoria is delighted to offer this strategically located privately held 32 acres of prime land in Little River Town.

Little River is a town in Victoria, Australia, approximately 44 kilometres south-west of Melbourne CBD, located within the Cities of Greater Geelong and Wyndham local government areas.

This property brings immense opportunities for land bankers and investors as it is currently a part of the Avalon Growth Strategy Corridor.

The Avalon corridor runs from Geelong to Melbourne, covering about 30,000 hectares of land. It also has a number of state and local important assets, such as Avalon Airport and the Western Treatment Plants for Water in Melbourne. It covers the entire town of Little River and certain parts of Lara, bringing together a large number of biodiversity values as well as sites of environmental and cultural importance.

- Land Size approx. 32 acres in GWZ
- Next to Little River Station

**Property ID:** L25712491

**Property Type:** Land

**Land Area:** 32.0 acres

**Kevin Paghdar**

0426510510

kevin.p@landvictoria.rh.com.au

- Right Opposite to Little River Town
- Easy access to Princes Freeway
- 8 mins Drive to Avalon Airport
- One of the last Prime Land Left in Little River

Interested parties should conduct their due diligence prior to making any submissions. Given are for general information only and do not constitute any representation on the part of the vendor or agent.

Call Kevin Paghdar on +61 426 510 510 Or Wendy Kaur +61 424 524 420 today for further enquiries.

Due Diligence Checklist –

<http://www.consumer.vic.gov.au/duediligencechecklist>