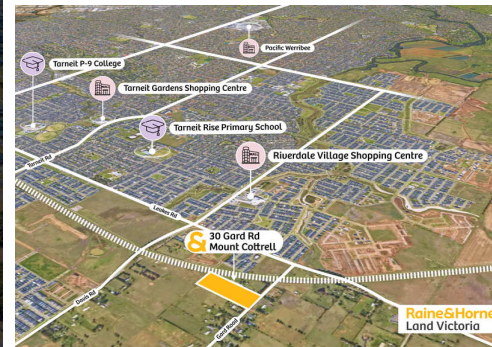
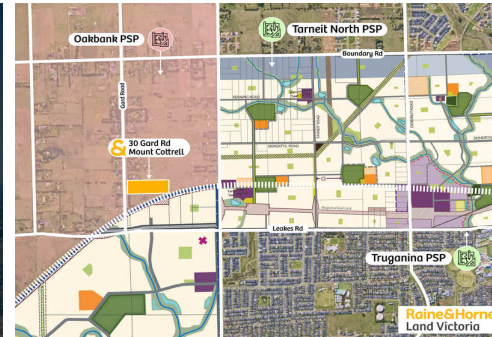


30 Gard Road

Mount Cottrell, Vic 3024

Raine&Horne
Land Victoria

10 ACRES DEVELOPMENT SITE IN
OAKBANK PSP



4



1



2

30 Gard Road, Mount Cottrell

CONTACT AGENT

Raine and Horne Land Victoria is proud to present strategically located, privately held 10 Acres in Urban Growth Zone in Mount Cottrell's Oakbank PSP. Mount Cottrell is located 26 km west from Melbourne CBD, within the City of Wyndham which is Australia's fastest growing municipality, seeing an 87% growth in population and 135% growth in number of businesses . The Oakbank PSP will ultimately accommodate approximately 28,363 people and 10,130 dwellings. Massive potential for the future with excellent Capital Growth. This is a property with endless opportunities.

Key Features

- 10 Acres in Urban Growth Zone
- Ideal for Future Residential Development in Oakbank PSP
- Property boasts a 4 Bedroom House with Separate Living Rooms
- Proximity to several trading residential estates and nearby Tarnet North PSP, Riverdale PSP and Truganina PSP
- One of the Prime land left to secure

Property ID: L27359522

Property Type: House

Garages: 2

Land Area: 10.0 acres

Kevin Paghdar

0426510510

kevin.p@landvictoria.rh.com.au

- Nearby excellent retail amenity: 4 kms to Riverdale Village, 6 kms to Tarneit Gardens Shopping Centre, 7 kms to Tarneit Central Shopping Centre
- 35 Min Drive to Melbourne Airport

Well suited to a diversity of purchasers including , developers, land bankers and investors (local & overseas) would be wise to inspect this property sooner rather than later.

Call Kevin Paghdar on 0426 510 510 or Harvir Hans on 0421 452 651 today for further enquiries.

Interested parties should conduct their due diligence prior to making any submissions. Particulars given are for general information only and do not constitute any representation on the part of the vendor or agent.

Due Diligence Checklist -

<http://www.consumer.vic.gov.au/duediligencechecklist>