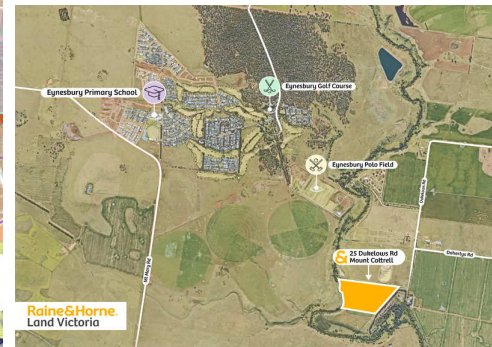
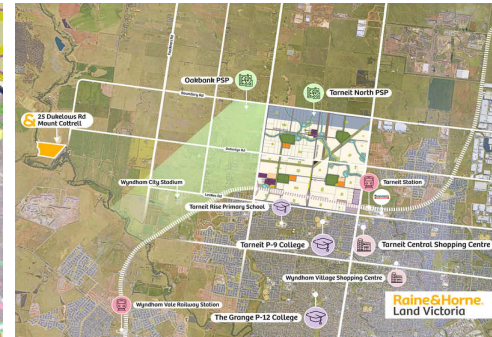


LAND BANK OPPORTUNITY IN MELBOURNE'S FASTEST GROWING AREA



25 Dukelows Road, Mount Cottrell

Price on Application

Raine and Horne Land VIC is pleased to offer this strategically located, privately held 65.66 acres (approx.) of prime Green Wedge Zone land in Mt Cottrell, a suburb in Wyndham LGA. In Jan 2023, KPMG ranked the states and territories with the highest annual population growth, and according to the figures, Wyndham was ranked No. 1 with an annual growth rate of 4 per cent from 2019-22.

Property's strategic location is proven by surrounding PSPs like Westbrook PSP, Oakbank PSP, Tarnet Plains PSP, Chartwell PSP, Rockbank South PSP, Mt Atkinson PSP, Toolern Park PSP and Eynesbury suburb is just across the river. Property is in close proximity of major town centres, stores, sports clubs, schools and health services. The newly developed and now functional Western United Soccer stadium and the planned Outer Melbourne Ring road is just a few minutes away.

All of the above makes this property an absolutely amazing land banking opportunity with future development potential (STCA).

Please contact Ankit Tandon on 0458 605 447 or Talwinder Dahiya on 0435 486 458 for further information.

DISCLAIMER: All stated dimensions are approximate only. Particulars given are for general

Property ID: L28259083
Property Type: Land/Development
Land Area: 65.66 acres

Ankit K Tandon
 0458 605 447
ankit.t@landvictoria.rh.com.au

information only and do not constitute any representation on the part of the vendor or agent.

Please see the below link for an up-to-date copy of the Due Diligence Check List:

<http://www.consumer.vic.gov.au/duediligencechecklist>