

Unit 32 - Great For A First Home Or Investment



2



1



1

27/538 Woodville Road, Guildford

Unit 32 is now for sale!

Unit 32 is now for sale!

Fantastic opportunity for first home buyers to enter the property market. It has an excellent layout and the potential on this blank canvas to create a beautiful home, is limitless.

- Expansive open living/dining, bathed in natural light, the living areas flow seamlessly to a private balcony.
- Contemporary kitchen equipped with gas cooktop and stainless-steel appliances
- Two bright and generous bedrooms. Main bedroom with private balcony.
- Stylish bathroom features built-in bath
- Internal laundry - Secure parking with storage cage and lift access.

It is located on level two of a modern, security, low rise building. As soon as you enter this apartment, you will be impressed by how light and bright it is.

It is a short stroll to Parramatta CBD, local parks, shops, recreational and worship facilities,

Property ID: L23235323

Property Type: Apartment

Open Parking: 1

Xiaolong (Eric) Wei

0457 579 999

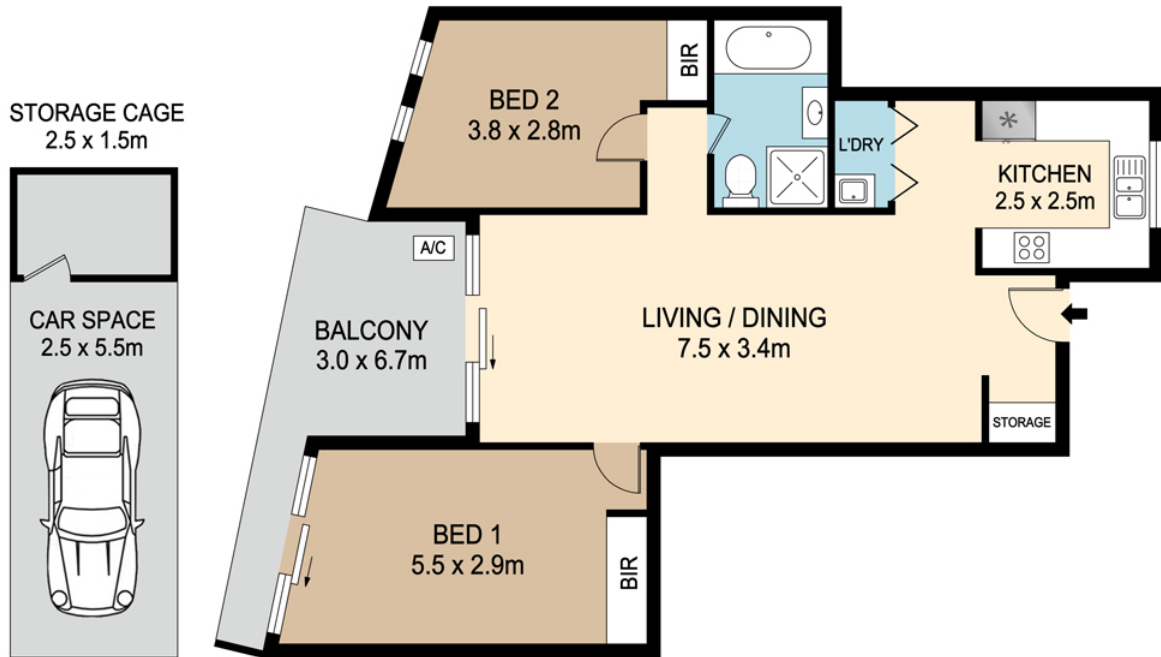
eric.w@lindfield.rh.com.au

primary and high schools, Woodville golf course, botanic gardens and sporting ovals.

Strata: \$652.40/Q, Water: \$165.02/Q, Council: \$315.00/Q (All Approx.)

Please contact Eric 0457 579 999 for more information!

Disclaimer: All information contained herein is gathered from sources we believe to be reliable. However, we cannot guarantee its accuracy; we do not accept any responsibility for its accuracy and do no more than pass it on. Any interested persons should rely on their own enquiries.



27/538 WOODVILLE ROAD, GUILDFORD



DISCLAIMER : PLANS SHOWN ARE FOR MARKETING PURPOSES ONLY. ALL DIMENSIONS ARE APPROXIMATE AND NOT TO SCALE. THEY ARE SUBJECT TO ERRORS AND INACCURACIES AND NO LIABILITY WILL BE ACCEPTED. INTERESTED PARTIES SHOULD MAKE THEIR OWN INQUIRES.

Raine&Horne.