

Luxury Convenient and Prestigious Location in the Heart of Pymble



2



2



1

401/8A Pymble Avenue, Pymble

Sold Prior To Auction

Nestled within of the most prestigious locations in Pymble with just a short walk to trains, buses, shops and one of elite private girl school- Pymble Ladies College. This luxury 2 bedroom and 2 bathroom apartment offers spacious and elegantly appointed homes designed for premier lifestyle. Situated on the fourth floor of a meticulously maintained security complex with Northwest facing living area extends onto a sunny, covered balcony boasts serene views of Pymble's lush parklands and city.

- Built in 2020 by Cascade Gardens on of finest project in Upper North Shore
- Northwest facing living opening to sunny covered private balcony with parklands bush look and city views
- Expansive main bedroom with built in robes and a master ensuite bathroom
- Spacious second bedroom includes built in wardrobes and floor-to-ceiling glass sliding doors that open to the balcony
- Equipped with a 30mm granite stone benchtop with Miele gas appliances including Bosch dishwasher and connections for a plumbed fridge.

Property ID: L26951848

Property Type: Apartment

Open Parking: 1

Zhe (Alex) Sun

0432148026

alex.sun@lindfield.rh.com.au

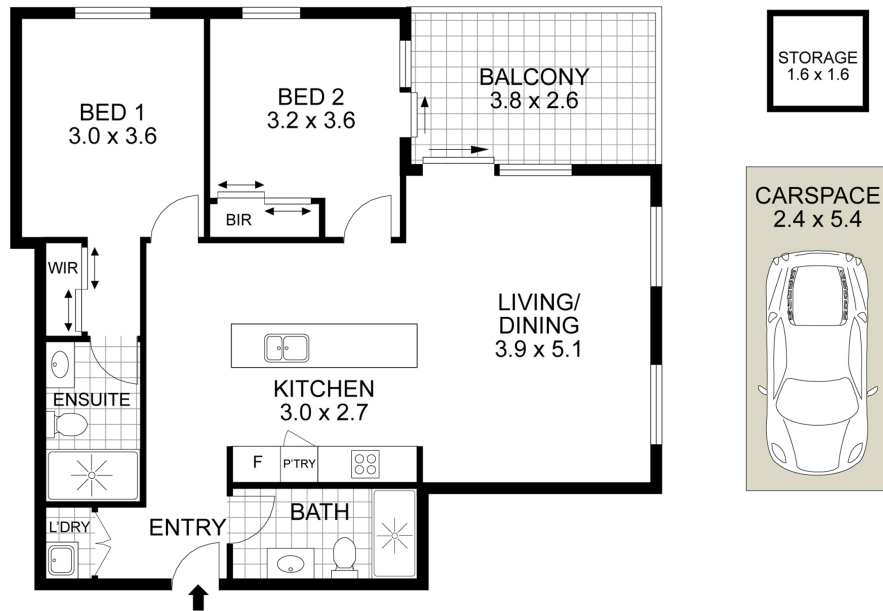
- Elegant timber flooring throughout the living areas
- Convenient internal laundry facilities with a brand-new clothes dryer
- Ducted air conditioning throughout and secure car spaces including good size of storage cage
- Minutes' walk to Pymble Ladies College as well as Pymble local cafes and shops

Lifestyle and locations:

- Approx. 130m to Pymble Train Station
- Approx. 100m to Pymble local cafes and shops
- Approx. 950m to Pymble Ladies College
- Approx. 550m to Robert Pymble Park
- Approx. 2.4km to Avondale Golf Club Pymble

Inspect as advertised or by appointment call Alex Sun 0432 148 026 or Tim Boyan 0404 466 666.

Disclaimer: The above information contained herewith, including but not limited to the general property description, price, and the address, is provided to Raine & Horne Lindfield by third parties, we have obtained this information from sources we believe to be reliable, However, we cannot guarantee the accuracy of this information and nor do we accept responsibility for its accuracy.



Disclaimer: Drawing not to scale. Please note that while the information contained in this floorplan is provided by reliable sources, we cannot guarantee its accuracy. It is intended as a guide. Interested parties should rely on their own enquiry

401/8A Pymble Avenue, Pymble

Raine&Horne®