



## Stunning Flat Brick Single-Level Home in Heart of Thornleigh



4



2



2

## 48 Dartford Road, Thornleigh

Auctioned for \$2,000,000 (Jul 28, 2024)

Located on one of Thornleigh's most popular streets, this stunning single-level residence is impeccably presented inside and out. With light-filled interiors, multiple living areas, and ultra-private landscaped gardens, it's perfect for families, investors, and downsizers. This home should be at the top of your inspection list.

### Features:

- Master bedroom with walk-in robe and en-suite
- Three additional bedrooms with built-in wardrobes
- Open-plan lounge/dining room with bamboo flooring and abundant natural light from large windows
- Bright kitchen with breakfast bar and adjoining casual meals or second living area
- Rear yard with alfresco dining area, manicured gardens, and level lawn
- Fully enclosed front yard with stone retaining wall and mature hedging, perfect for family sports

Property ID: L28403397

Property Type: House

Garages: 2

**Zhe (Alex) Sun**

0432148026

alex.sun@lindfield.rh.com.au

- Double garage with large attic storage
- Recent updates: ducted air conditioning, Vedura bamboo flooring, fresh paint, and Solar battery system

- Easy-care 484.7 sqm block

- Location:\*\*

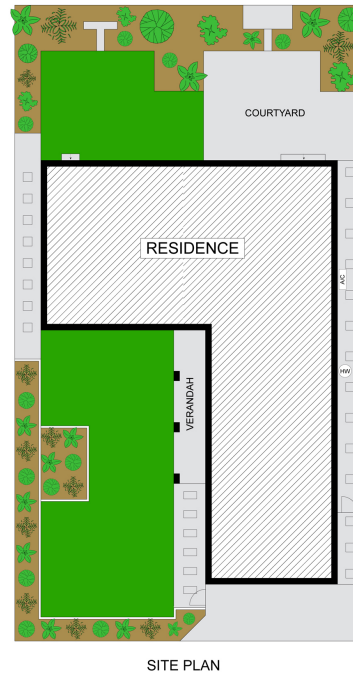
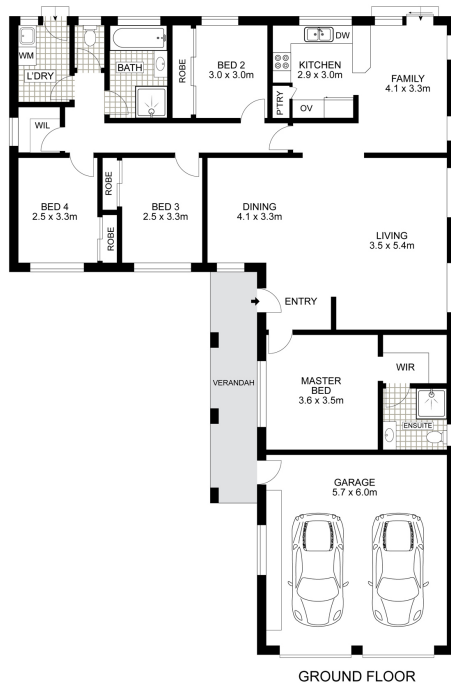
- 450m to Normanhurst West Public School
- 1.4km to Normanhurst Train Station and local cafes
- 800m to Normanhurst Park
- 1.1km to Larool Preschool

Short drive to quality private schools including Barker College, Knox Grammar and Abbotsleigh , Hornsby Westfield, and M1/M2 motorways

exceptional opportunity!

Inspect as advertise or by appointment call Alex Sun 0432 148 026 Or Eric Wei 0457 579 999

Disclaimer: The above information contained herewith, including but not limited to the general property description, price, and the address, is provided to Raine & Horne Lindfield by third parties, we have obtained this information from sources we believe to be reliable, However, we cannot guarantee the accuracy of this information and nor do we accept responsibility for its accuracy. Any interested parties should rely on their own enquiries and judgment to determine the accuracy of this information for their own purposes.



Approx. Internal Floor Area : 171 Sqm

Disclaimer: Drawing not to scale. Please note that while the information contained in this floorplan is provided by reliable sources, we cannot guarantee its accuracy. It is intended as a guide. Interested parties should rely on their own enquiry

48 Dartford Road, Thornleigh

**Raine & Horne**