

Stunning 2-Bedroom Apartment with Panoramic Sydney Skyline Views



2



2

510/6 Ebsworth Street, Zetland

Sold for \$1,050,000 (Sep 06, 2024)

Experience the best of luxury urban living in this two-bedroom apartment, perfectly positioned on the 5th floor of the landmark OVO building by Mirvac, in the heart of Green Square's cosmopolitan district.

The features include:

- Two large bedrooms with floor-to-ceiling built-in wardrobes
- Two luxurious bathrooms with plenty of storage, including an ensuite off the master
- Modern kitchen with stone benchtop, European stainless-steel gas stove, and an integrated dishwasher
- Open plan living and dining area flowing onto a covered alfresco area on the balcony

Internal laundry

-Ducted air conditioning, video intercom, and NBN connectivity

-Secure entrance, mail room, and lift access

Property ID: L28431432

Property Type: Apartment

Building / Floor Area: 77

Winnie Cheng

0414 363 818

winnie.c@lindfield.rh.com.au

-Convenient basement storage cage

The location is second-to-none:

-In less than a minute's walk, you can visit the local Woolworths or library

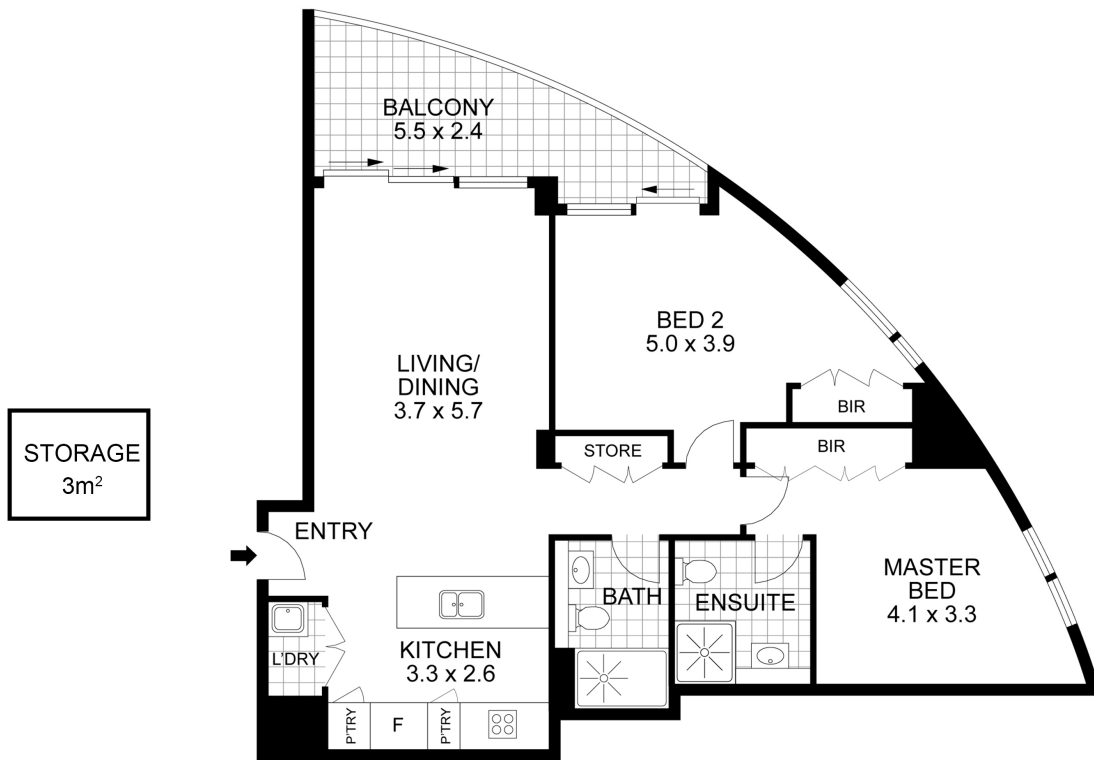
- Also within a minute you can get to the bus stop or railway station, where one stop will get you to Sydney's CBD

-A short stroll will find you at the Gunyama Park Aquatic Centre, East Village, or a number of cafes, restaurants,

and eateries

-When it comes time to travel, you'll be close to Sydney Airport (4km)

Disclaimer: The above information contained herewith, including but not limited to the general property description, price, and address, is provided to Raine & Horne Lindfield by third parties, we have obtained this information from sources we believe to be reliable, However, we cannot guarantee the accuracy of this information and nor do we accept responsibility for its accuracy.



Internal + External Area : 82 sqm Approx.
Storage : 3 sqm Approx.
Total Size : 85 sqm Approx.

Disclaimer: Drawing not to scale. Please note that while the information contained in this floorplan is provided by reliable sources, we cannot guarantee its accuracy. It is intended as a guide. Interested parties should rely on their own enquiry

510/6 Ebsworth St, Zetland

Raine&Horne®