

Architectural reinvention invites a blue-chip peninsula lifestyle



8 Manns Avenue, Greenwich

Sold

Devote yourself to the art of living well in this flawless entertainer, offering a premium ready to enjoy lifestyle in one of Sydney's best harbourside enclaves. A vivacious architect designed re-invention of the property, completed in 2022, has seamlessly evolved into a state-of-the-art home of exceptional style and quality. Here, the astute layout maximises natural light levels from the north elevation, framing garden and district views while maintaining a quiet sense of peace and privacy. This is a home for any age, easy care for busy families, and presenting entertainer's luxury for downsizers, set across a fluent single level. Settled in Greenwich's popular peninsula location, from here it's a simple stroll to Greenwich Baths, ferry to Circular Quay, cafes, and the waterfront leisure of Manns Point Park. Embrace an inspired indoor-outdoor lifestyle with nothing left to do but relax.

- Harbourside lifestyle of flawless modern luxury and effortless convenience
- A classic central hall and blackbutt timber floors lead into light-filled interiors
- Captivating living and dining open on three sides to integrate alfresco spaces
- Custom stone kitchen keeps the cook as part of the action when entertaining
- Quality appliances: induction cooktop, electric oven, and a Miele dishwasher

Property ID: L16580949

Property Type: House

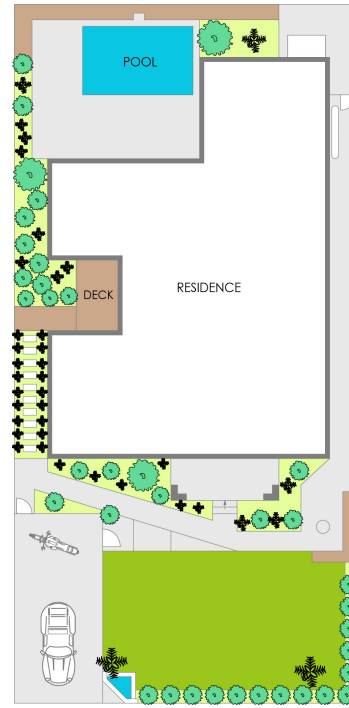
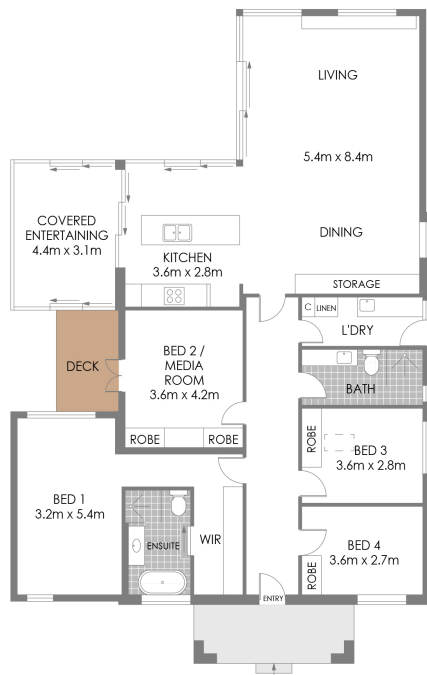
Open Parking: 1

Mary-Anne Fitzgerald

0418 648 654

maf@lns.rh.com.au

- Four bedrooms, 2nd adaptable as a living area with separate entry, built-in robes
- Main bedroom with restful contemporary appeal, walk-in robe and a luxe ensuite
- Exquisite bathrooms with heated floors, showers, bath and task lights to ensuite
- Entertain in style on the terrace or across the covered and cleverly screened deck
- Make a splash in the heated plunge pool with its revitalising deep end
- Spacious layout where open ambience seamlessly includes built-in storage
- On-site parking, ducted reverse air con, landscaped illuminated level garden
- City buses are at your gate, walk to Wollstonecraft station, close to Crows Nest



SITE PLAN
(NOT TO SCALE)



8 Manns Avenue, Greenwich

PLANS SHOWN ONLY INDICATIVE OF LAYOUT. DIMENSIONS ARE APPROXIMATE.
Measurements are approximate and not to scale. The Vendor, agency and supplier will no liability for its accuracy. Interested parties are advised to make their own independent enquiries.

Raine&Horne
Lower North Shore