

**Sold prior to auction by Oscar Nicholls**  
0466 901 442



2



1



1

## 36/482 Pacific Highway, Lane Cove

### Sold Prior To Auction

A haven for busy city commuters, this bright and spacious apartment offers turn-key living with convenience that's second to none. Bathed in sunshine, freshly schemed and providing plenty of scope to further capitalise, it occupies a peaceful north-facing aspect overlooking the complex pool. Featuring laneway access to Helen St Reserve and bus services at the door, from this centralised location a short stroll leads to Artarmon station, Lane Cove village and Chatswood's bustling CBD.

- Quietly set with streams of sunlight enjoyed from its prime northerly position
- Open plan living with glass sliders flowing to the sun-soaked balcony
- Sunny eat-in kitchen fitted with plenty of cabinetry
- Oversized bedrooms with mirrored robes, main with leafy views
- Large bathroom includes a bath and separate shower
- New carpet, fresh paint and a covered car space on-title
- Sundrenched outdoor pool, BBQ facilities and child-friendly gardens

**Property ID:** L23348947

**Property Type:** Apartment

**Garages:** 1

**Oscar Nicholls**

0466 901 442

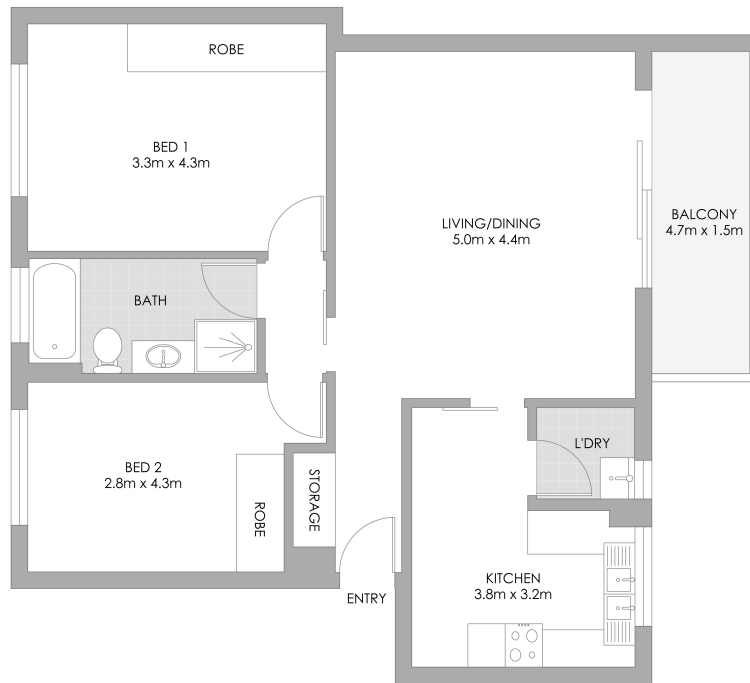
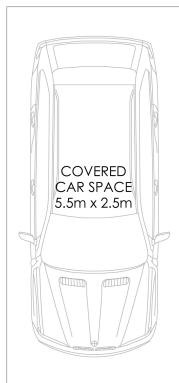
oscarn@lns.rh.com.au

- Laneway access to Helen St Reserve and 150m to Chatswood buses
- Walk to Artarmon station and Lane Cove Bus Interchange
- Stroll to Lane Cove's café scene, shops, restaurants and green spaces

Strata: \$1,189/Q (Approx.)

Council: \$373/Q (Approx.)

Water: \$171/Q (Approx.)



36/482 Pacific Highway, Lane Cove

PLANS SHOWN ONLY INDICATIVE OF LAYOUT. DIMENSIONS ARE APPROXIMATE.  
Measurements are approximate and not to scale. The vendor, agency and supplier will accept no liability for its accuracy. Interested parties are advised to make their own independent enquiries.

**Raine&Horne**  
Lower North Shore