

Sold for a block record prior to auction by Oscar Nicholls 0466 901 442



2



1



1

35/6 Murray Street, Lane Cove

Sold Prior To Auction for \$800,000 (Jul 09, 2024)

Well-presented apartment in a quiet yet convenient location

Positioned at the rear of a low-rise security building framed by elevated leafy vistas, this two-bedroom apartment is an absolute gem. Featuring a unique layout designed to maximise its privacy, the separate dining area provides flexibility for work-from-home professionals, while the spacious bedrooms boast plenty of natural light and treetop views. A north facing balcony is ideal for that quiet morning coffee, while the well-equipped kitchen will please the keen home cook. Nestled amidst picturesque reserve trails, the complex is conveniently central to all of Lane Cove's cosmopolitan attractions, city transport, Artarmon station and Chatswood's CBD. Move-in ready, it is a fantastic first home or investment opportunity within this popular pocket.

- Living area with separate dining provides the option for an office space
- Gourmet kitchen with stainless steel appliances and abundant cabinetry
- Northeast balcony ensures a seamless indoor/outdoor connection
- Spacious bedrooms includes a king-sized main bed with fitted wardrobes

Property ID:	L26701350
Property Type:	Apartment
Building / Floor Area:	74
Garages:	1

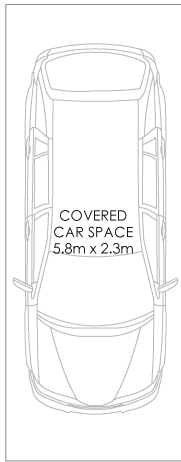
Oscar Nicholls
0466 901 442
oscarn@lms.rh.com.au

- Fully tiled bathroom featuring a combined bath and rainshower
- Ceiling fans in both the living area and bedrooms
- Covered parking, set at the rear of a well-maintained full brick building
- Stroll to Stringybark Creek and Helen St reserves for picnics and BBQ's
- Walk to the Bus Interchange and Artarmon station for rapid city access
- Close to Lane Cove village, quality schools, cafes and restaurants

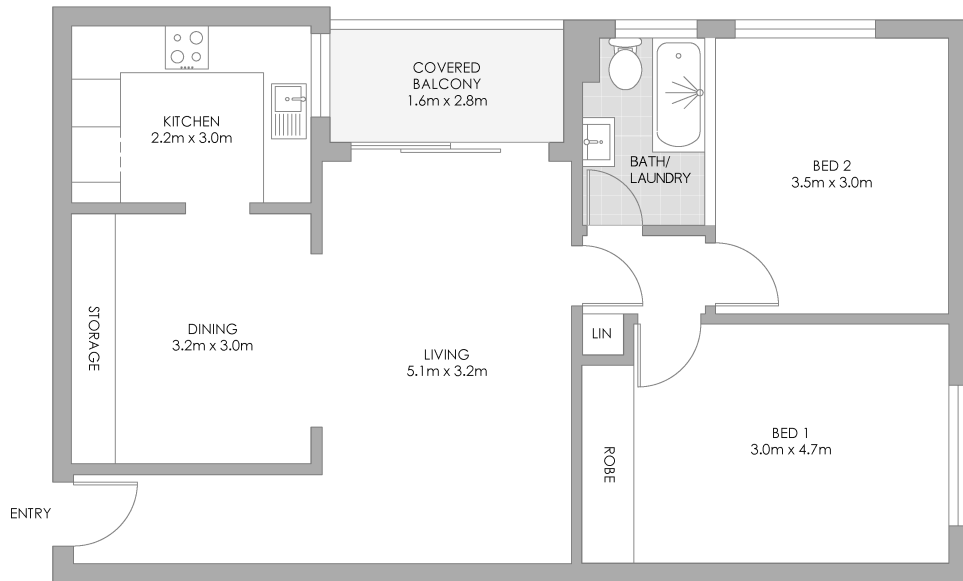
Strata: \$1,229/Q (Approx.)

Council: \$373/Q (Approx.)

Water: \$171/Q (Approx.)



GROUND FLOOR



LEVEL 3



35/6 Murray Street, Lane Cove

PLANS SHOWN ONLY INDICATIVE OF LAYOUT. DIMENSIONS ARE APPROXIMATE.
Measurements are approximate and not to scale. The vendor, agency and supplier will accept no liability for its accuracy. Interested parties are advised to make their own independent enquiries.

Raine&Horne
Lower North Shore