



Sold by Oscar Nicholls 0466 901 442



1



1



1

404/9 Waterview Drive, Lane Cove

Sold for \$700,000 (Aug 16, 2024)

Riverside sanctuary in a prestigious community enclave

Framed by boat-studded views across Lane Cove River, this 70sqm apartment revels in an elevated position in the luxurious 'Bay Pavilions'. An idyllic riverside retreat where beauty aligns with an enviable urban lifestyle, it sits within a popular community enclave on the fringe of Burns Bay Reserve. Located adjacent to Hughes Park and boasting a grocer and daycare centre on-site, from this immaculate lock-up and leave residence enjoy convenient access to city transport, village shops, and everything the area has to offer.

- Light-filled living area with floor-to-ceiling glass to an oversized balcony
- Sunny east-facing aspect with boat-studded water views across Riverview
- Designer CaesarStone kitchen equipped with premium European appliances
- Spacious undercover balcony overlooking the river ensures idyllic entertaining
- Oversized bedroom framed by floor-to-ceiling glass and its own balcony
- Deluxe bathroom featuring stone accents and a walk-in shower

Property ID: L28127809

Property Type: Apartment

Building / Floor Area: 75

Garages: 1

Land Area: 82.0 sqm

Oscar Nicholls

0466 901 442

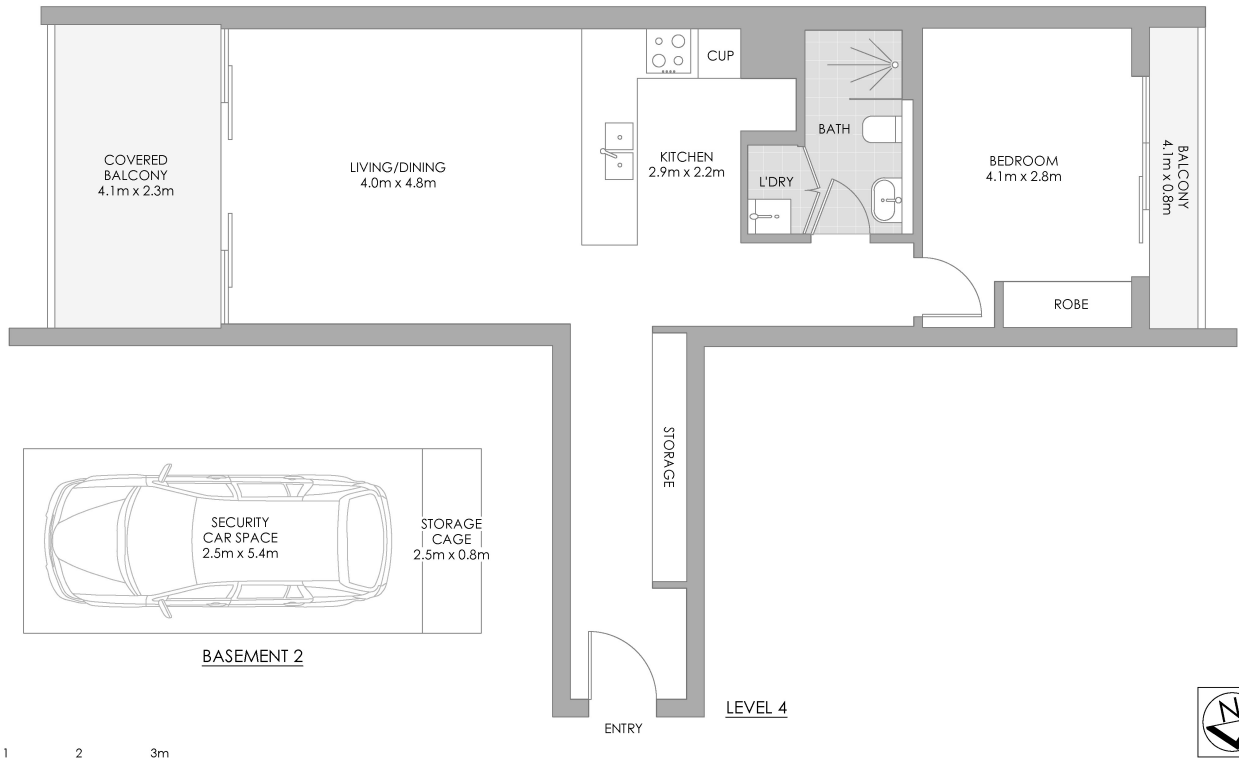
oscarn@lns.rh.com.au

- Fitted wardrobes, copious integrated storage and a European laundry
- Ducted air conditioning, intercom entry and security parking on-title
- Footsteps to Hughes Park, waterfront parklands and the water's edge
- On-site grocer, daycare centre and on-leash dog park
- Stroll to city buses and Figtree shops, with easy access to the village hub
- Well placed for quality schools, Hunters Hill, Lane Cove and the CBD

Strata: \$1,203/Q (Approx.)

Council: \$373/Q (Approx.)

Water: \$171/Q (Approx.)



404/9 Waterview Drive, Lane Cove

PLANS SHOWN ONLY INDICATIVE OF LAYOUT. DIMENSIONS ARE APPROXIMATE.
Measurements are approximate and not to scale. The vendor, agency and supplier will accept no liability for its accuracy. Interested parties are advised to make their own independent enquiries.

Raine&Horne
Lower North Shore