

## Luxurious apartment in the heart of Wollstonecraft



3



2



2

## G01/5 Belmont Avenue, Wollstonecraft

**\$1400 per week**

Nestled in a tranquil part of Wollstonecraft, mere steps from the station, this luxurious 3 bedroom apartment situated within "The Belmont" is a true gem. Its state of art design and upscale finishes create an elegant ambiance. Enjoy serene views from the living room, which seamlessly connects to a spacious courtyard via large sliding doors, giving it a house-like feel. The spacious bedrooms, with their floor-to-ceiling windows, add to the sense of space and provide a peaceful retreat for relaxation and entertainment.

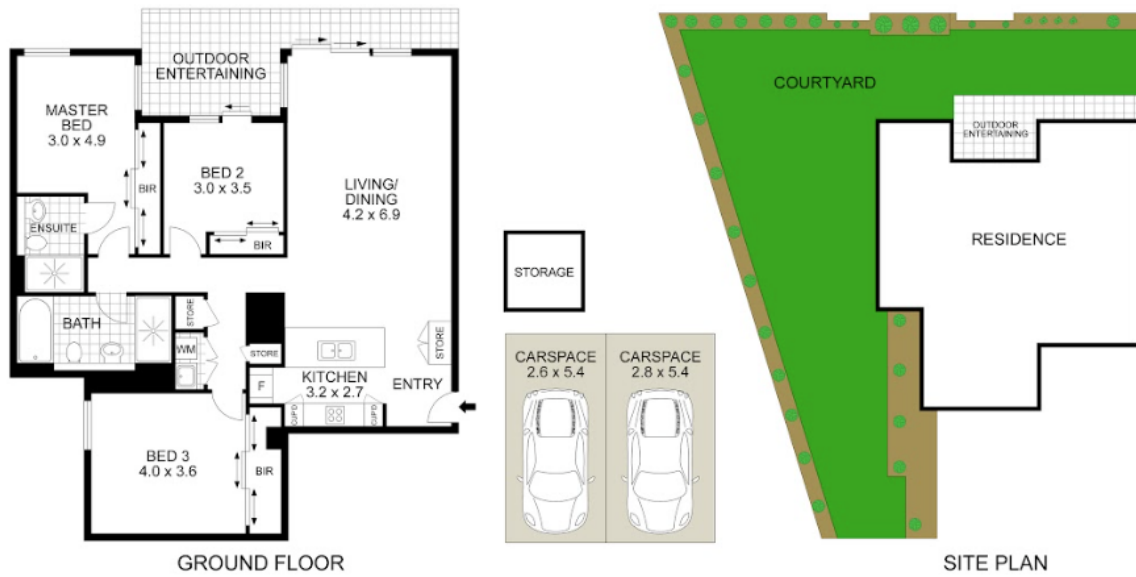
Enjoy a leisurely stroll from Wollstonecraft Station for easy city access, while close to Crows Nest village shops, cafes and restaurants, this apartment makes it ideal for those who cherish tranquility yet crave the vibrancy of city life.

- Spacious living area with premium engineering oak floor and uninterrupted view over courtyard
- Expansive courtyard, newly updated, perfect for outdoor living and entertaining.
- Designer Kitchen featuring Carrara marble countertops, premium Miele appliances, and soft-close cabinetry.
- Three spacious bedrooms with new carpet adorned with fitted wardrobes for ample storage.

**Property ID:** R3534358  
**Property Type:** Apartment  
**Open Parking:** 2

**Samuele Palamara**  
 0431 701 278  
[leasing@lns.rh.com.au](mailto:leasing@lns.rh.com.au)

- Two luxurious marble bathrooms equipped with a walk-in rain shower.
- Communal rooftop terrace ideal for hosting family and friends.
- Benefit from modern amenities such as video intercom, lift access, visitor parking.
- Double car space in secure garage with extra storage.
- Pets considered on application.



Living Area: 326 sqm  
 Carspace + Storage: 33 sqm  
 Total Size: 359 sqm

Disclaimer: Drawing not to scale. Please note that while the information contained in this floorplan is provided by reliable sources, we cannot guarantee its accuracy. It is intended as a guide. Interested parties should rely on their own enquiry.

G01/5 Belmont Avenue, Wollstonecraft