



## Woodford Island living on the Clarence River



3



1



4

## 1068 South Arm Road, South Arm

Sold for \$699,000 (Jun 27, 2024)

Welcome to 1068 South Arm Road, South Arm! This charming property is now available for sale. With its convenient location and proximity to the Clarence River, this property is perfect for those seeking a comfortable and spacious home with a touch of privacy.

Featuring 3 bedrooms and views that will knock your socks off, this house offers ample space for a growing family or those who enjoy hosting guests. On the lower level you can escape with your own private bar and secluded retreat.

For car enthusiasts or those with multiple vehicles, this property offers a double garage and double carport spaces, providing plenty of room for parking and storage and do not forget the great workshop space for those who love to tinker.

Situated on a generous land area of 11,510 m2 or 1.15 Hectares, this house provides ample space for outdoor activities and potential future developments. The views from the home and at the rear of the home will take your breath away, magnificent!

Inside, you'll find a range of modern features including a brand-new kitchen with stone bench tops built-in robes and walk in robe in main bedroom, a dishwasher, an internal laundry, and a rumpus room. The property also offers secure parking and split system air conditioning on both levels, ensuring comfort and convenience all year round.

**Property ID:** L23990616

**Property Type:** House

**Building / Floor Area:** 187

**Garages:** 2

**Carports:** 2

**Land Area:** 1853.0 sqm

**Travis McConnell**

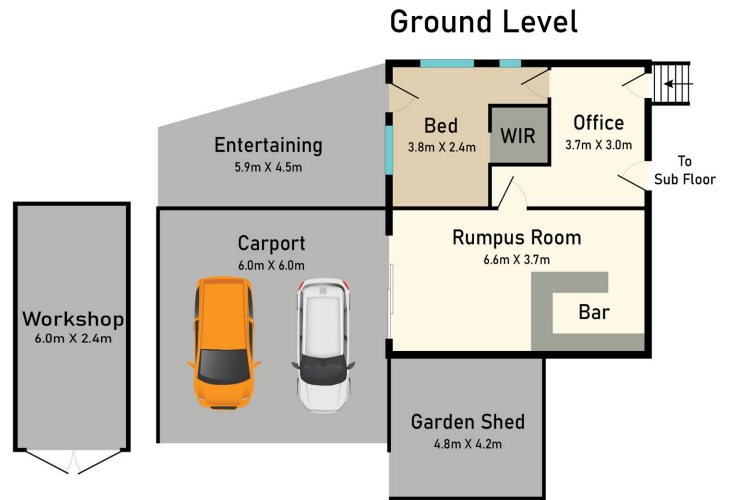
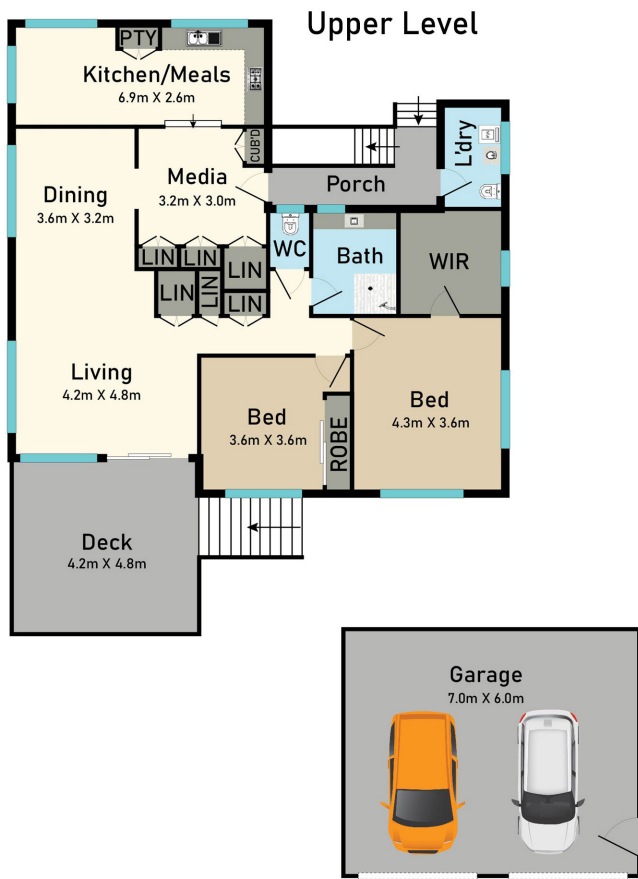
0407 450 007

travis.mcconnell@myi.rh.com.au

Step outside onto the deck and enjoy the beautiful garden and water views that this property has to offer. You will find afternoons will go by as you enjoy the Mighty Clarence River.

For those who value eco-friendly living, this property comes with ceiling insulation and a water tank, helping to reduce energy consumption and water wastage.

Don't miss out on the chance to make this property your own. Contact us today to arrange a private viewing or attend an open home and secure your dream home at 1068 South Arm Road South Arm.



1068 South Arm Rd, South Arm, NSW 2460

This floor plan, including measurements and dimensions, are approximate and for illustrative purposes only.  
The agent gives no guarantee, warranty or representation as to the accuracy and layout.