



## North Facing Parkside Apartment



2



1

## 8/1 Gray Crescent, Eastlakes

Sold Prior To Auction for \$680,000 (Jul 05, 2024)

Located at the end of a quiet cul-de-sac comes this top floor, oversized 2 bedroom apartment overlooking Edmund Throrton Reserve. A perfect steppingstone into the Sydney real estate market or opportunity to add to your property portfolio.

- Spacious Open living and dining area
- North Facing Balcony overlooking park
- 2 Bedrooms with built in wardrobes
- Kitchen with gas appliances
- Updated bathroom with separate bath
- Ample storage throughout

Centrally located and within a minute's walk to Eastlakes Reserve, the new Eastlakes Shopping Centre and transport direct to Sydney's CBD. With the recent high end development of the new shopping centre, capital growth is assured.

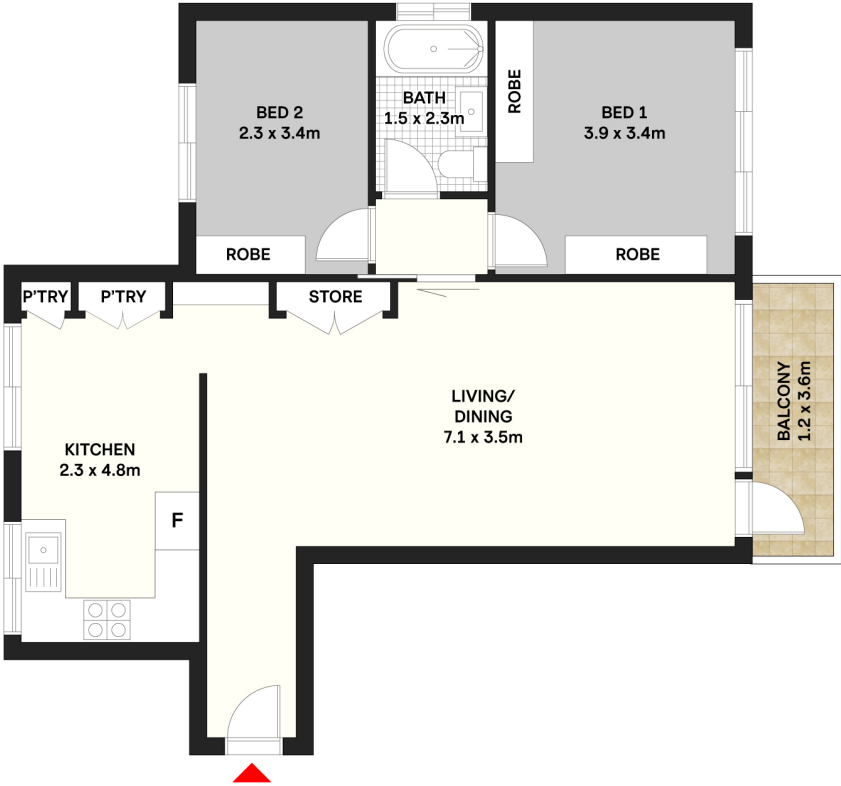
Property ID: L27811157

Property Type: Apartment

**Paul Spanoudakis**

0411 506 007

Paul.Spanoudakis@maroubra.rh.com.au



Scale in metres. Dimensions are approximate. All information contained herein is gathered from sources we believe to be reliable, however we cannot guarantee its accuracy and interested persons should rely on their own enquiries.