

Designer style, space and elevated district views



1



1



1

1103/2A Mark Street, Lidcombe

Sold for \$563,000 (Jul 10, 2024)

Positioned right in the heart of Lidcombe's thriving lifestyle hub and just footsteps to local cafés, shopping options and the train station, this designer one-bedroom plus study residence displays contemporary sparkle and easy convenience. It sits in an elevated position with sweeping urban outlooks and features a generous single-level floorplan that's ideally configured to meet the needs of those who enjoy low-maintenance living. The well-proportioned home is wonderfully appointed with a great combination of clean fresh lines, natural light and sleek style, and is positioned within a quality security building.

- High 11th floor position with modern and stylish interiors
- A generous open plan living space flooded with sunlight
- Wide covered balcony and elevated views over the district
- Well-sized double bedroom plus a separate home office
- Contemporary kitchen and stainless-steel gas appliances
- Designer bathroom, internal laundry plus intercom entry

Property ID: L23420063

Property Type: Apartment

Building / Floor Area: 60

Garages: 1

Land Area: 76.0 sqm

Michael Pizzata

0490 018 058

Michael.Pizzata@mdh.rh.com.au

- Easy lift access to a storage cage and security car space
- Shared rooftop BBQ terrace with panoramic city vistas

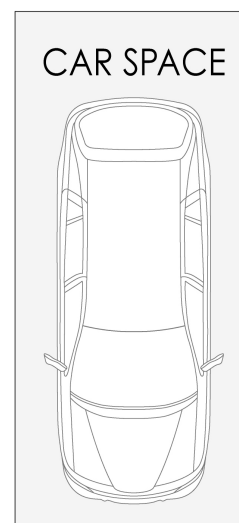
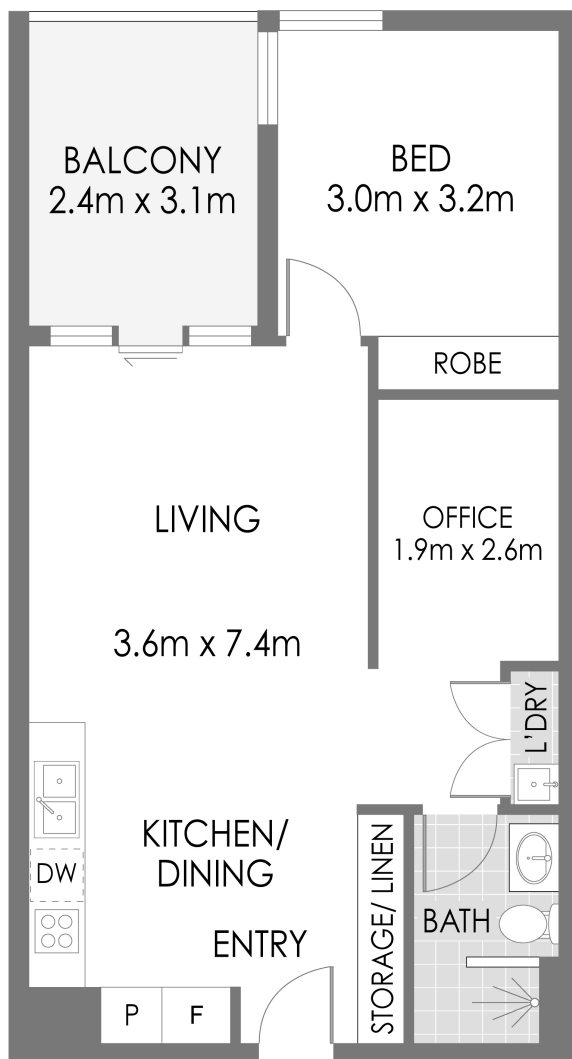
Suburb Profile: Lidcombe 2141

Lidcombe is located 15 Kilometers West of the Central Business District. The area has become increasingly popular in recent times offering diverse eateries, shops, restaurants in the heart of Lidcombe. Surrounded by multiple park lands such as Philipps Park and Lidcombe Oval the area is well equipped for all families. Handy Transport links flow through Lidcombe with direct train lines into the city and abundant bus routes throughout the area. Lidcombe presents an exciting and welcoming opportunity for people from all walks of life.

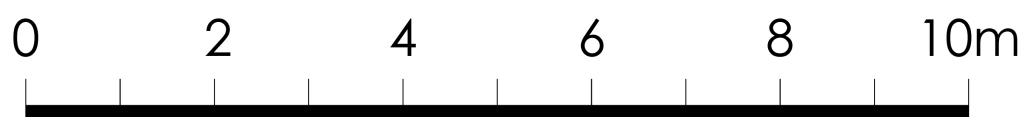
Agent: Michael Pizzata

Raine & Horne Marrickville 02 9560 7599

<https://www.raineandhorne.com.au/marrickville>



LEVEL ELEVEN



Unit 1103/2A Mark Street, Lidcombe

PLANS SHOWN ONLY INDICATIVE OF LAYOUT. DIMENSIONS ARE APPROXIMATE.
Measurements are approximate and not to scale. The vendor, agency and supplier will accept no liability for its accuracy.
Interested parties are advised to make their own independent enquiries.

Raine&Horne®