



Executive Beachside Apartment



2



2



1

23/1283-1287 Pittwater Road, Narrabeen

Contact Agent

Defined by its elegant coastal feel, this quality apartment building exudes style and a special blend of luxury within a sought after lifestyle location. The apartment offers north and east facing living areas and provides effortless indoor/outdoor living. It is delightfully sunlit and enjoys the unique benefits of Winter sunshine and Summer sea breezes.

Features include:

- All the usual benefits of this beach and lake side location are here including close proximity to schools, restaurants hotel and transport
- Master bedroom enjoys the views with balcony alfresco living space, walk through robes and ensuite with bath and shower
- Open plan gas kitchen with stone bench tops and polyurethane cabinetry, air-conditioned living spaces and internal laundry
- Security building and security garaging with storage facilities

Council Rates: \$289.10 per quarter approx.

Property ID:	L11234453
Property Type:	Apartment
Building / Floor Area:	81
Garages:	1
Land Area:	159.0 sqm

Dom Didio

0401 994 412

dom.didio@monavale.rh.com.au

Water Rates: \$161.05 per quarter approx.

Strata Levies: \$789.60 per quarter approx.

COVID19 VIEWING POLICY – We take the safety of our team and community seriously. Our properties are available to view via one of the following:

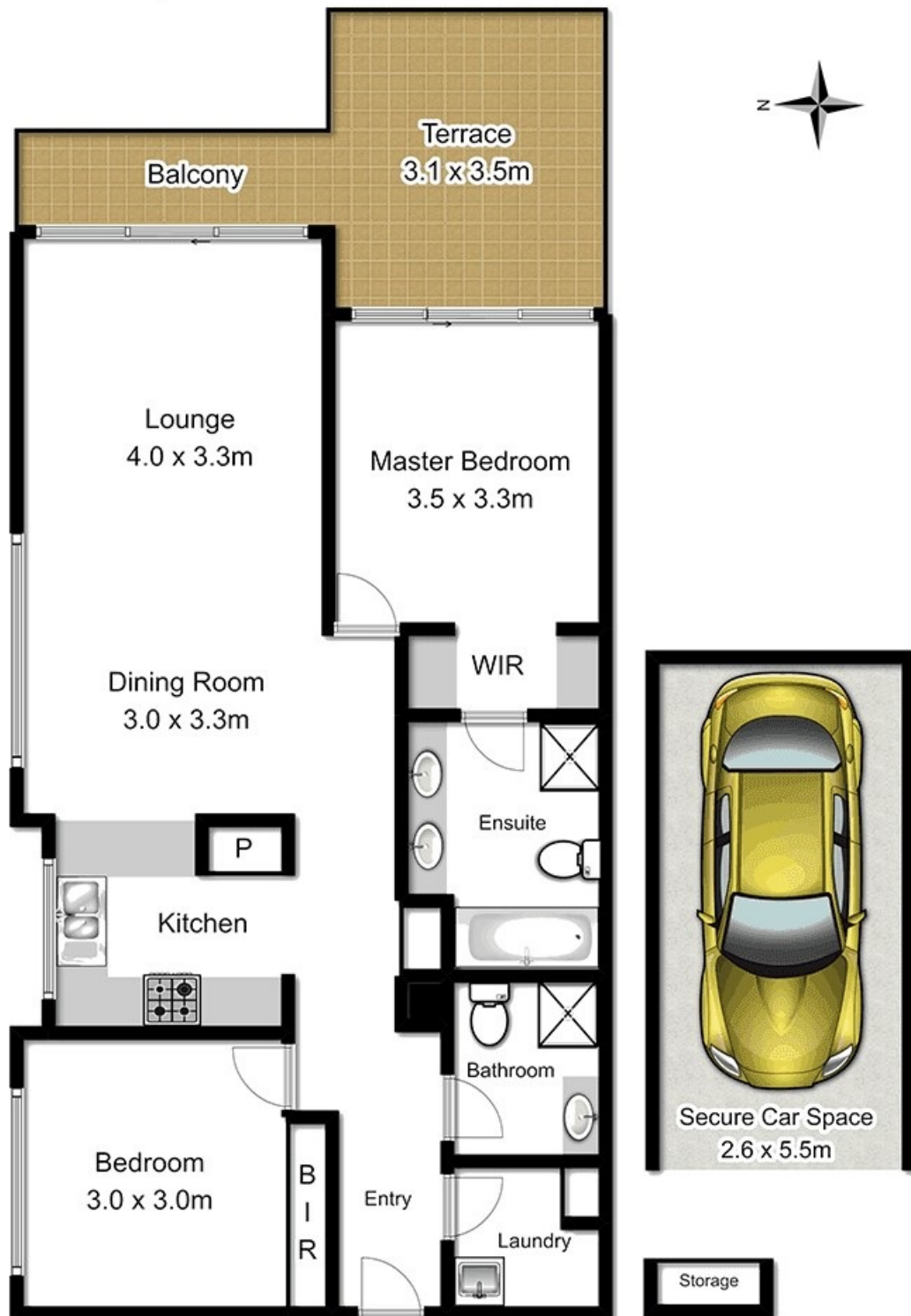
- Attend one of our scheduled Open for Inspections.
- Inspect by private viewing (subject to property availability)

Please note that we are adhering to Government guidelines to always ensure the safety of our team and the community. We do welcome you to attend our viewings, however kindly request that you:

- Masks are no longer mandatory however, they are highly recommended in situations where social distancing is difficult
- Keep our team and community safe by not attending an inspection if you are feeling unwell
- Make use of the complimentary hand sanitizer provided at all viewings

Disclaimer: All information contained in this advertisement has either been provided to us by a third-party, or otherwise and we have no reason to doubt its accuracy but do not take any responsibility for it. All interested parties should rely upon their own inquiries as to whether or not this information is accurate.

23/1283 Pittwater Road, Narrabeen



Measurements are approximate. Not to scale. Illustrative purposes only
Open2view does not take any responsibility for any information supplied