

## Dream Coastal Retreat In Mona Vale Basin



4



4



2

## 1/2 Darley Street East, Mona Vale

### Sold

Welcome to your dream coastal retreat, where every detail exudes sophistication and comfort. This stunning home with a double garage is not just a property; it's a testament to luxury and relaxed beachside living. Located in the exclusive enclave of Mona Vale Basin, this near-new, architect-designed, and master-built tri-level residence offers extreme flexibility for generational family living and a lifestyle that's second to none. The ground floor has been designed as a fully self-contained one-bedroom granny flat, complete with its own private access and north-facing courtyard. On the middle level, there are two bedrooms, a spacious living area, and a well-equipped kitchen. This level also boasts two bathrooms and a balcony that offers scenic views over Apex Park. There is also the flexibility of adding an additional bedroom if needed. On the top level, the master bedroom is accompanied by an ensuite bathroom. Additionally, there is a designated TV room and a generously sized open plan living and dining area. The kitchen on this level is gourmet and comes with a butler's pantry. What makes this level truly special is its panoramic view of the ocean, creating a picturesque ambiance.

- Located adjacent to beachfront reserve and immediately across the road from the ocean, this property offers never to be built out Pacific Ocean views
- With a generous 260 plus square metres of internal space, this tri-level home offers extreme flexibility for family living

**Property ID:** L20445118

**Property Type:** House

**Carports:** 2

**Land Area:** 695.6 sqm

### Ben Spackman

0401 326 623

[ben.spackman@monavale.rh.com.au](mailto:ben.spackman@monavale.rh.com.au)

- Full lift access to all levels from the foyer – the home can be set up as 3 separate accommodations each with their own dedicated entry
- All three kitchens feature handmade Moroccan Zellige tiles and are equipped with integrated fridges and dishwashers, ensuring a seamless blend of modernity and functionality throughout
- Fully ducted air conditioning, 3 Phase power and double glazing or Hush glass to all windows
- Gas fireplace, electric blinds, outdoor heaters, full bathroom heating, LED lighting throughout and a 10kw solar panel system
- Moments to Mona Vale Village and the local golf course

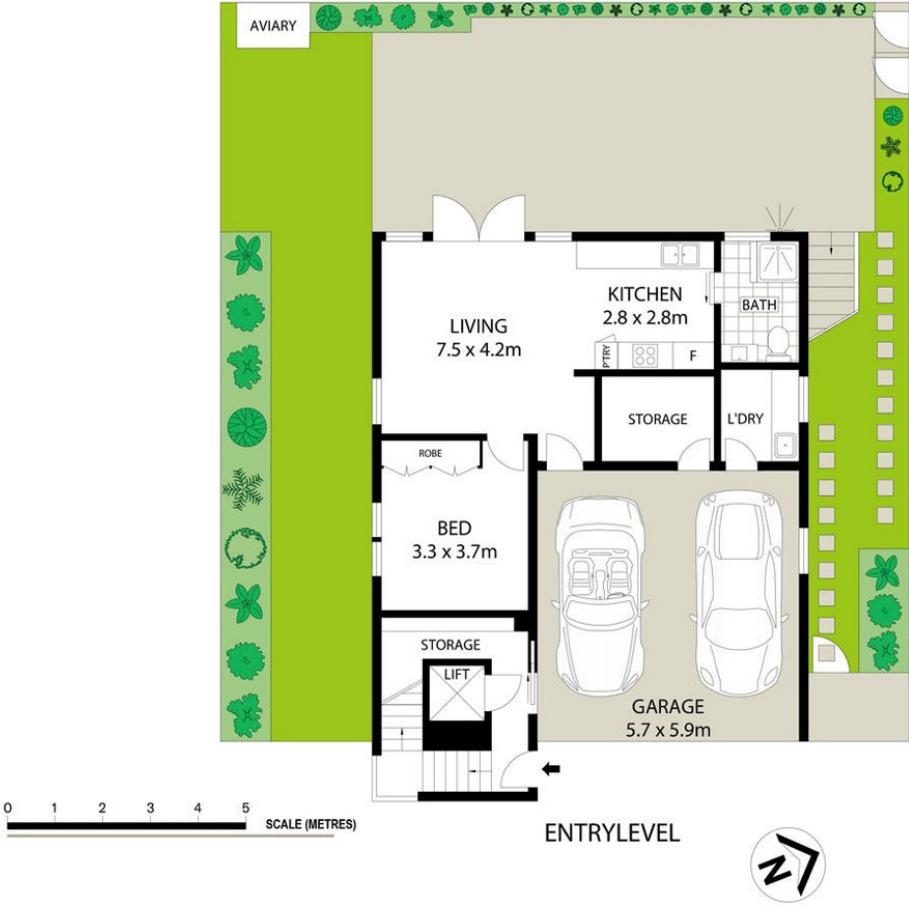
Rates:

Water: \$171.41 per quarter approx.

Council: \$491.22 per quarter approx.

Disclaimer: All information contained in this advertisement has either been provided to us by a third-party, or otherwise and we have no reason to doubt it's accuracy but do not take any responsibility for it. All interested parties should rely upon their own inquiries as to whether or not this information is accurate.

1/2 Darley Street East, Mona Vale



This floor plan is provided for indicative purposes only. All information herein is gathered from sources we believe to be reliable. We cannot however guarantee its accuracy, and interested parties should make and rely on their own enquiries.