



Easy Beachside Living, 200m To The Surf



2



1



1

## 5/16 Terrol Crescent, Mona Vale

Sold for \$1,150,000 (Mar 28, 2024)

Beautifully presented, top floor unit located in a sought-after location at the end of a quiet cul-de-sac and moments to Mona Vale Beach. Situated in a boutique block of only six, this north facing unit features a spacious master bedroom and the oversized garage provides ample space for your car and additional storage. Just moments to the golden sands of Mona Vale Beach, this location offers endless opportunities for beach walks, surfing, and relaxation by the water. Whether you're seeking a weekend getaway, a downsizing opportunity, or a savvy investment, this property ticks all the boxes. Don't miss out on this rare chance to secure your dream coastal retreat.

- Open plan living/dining area
- Modern kitchen with plenty of cupboard space
- Large main bedroom with mirrored built-in & 2nd bedroom with built-in
- Bathroom with separate bathtub and floor to ceiling tiles
- Lengthy tiled balcony, down lights throughout
- Single lock up garage with ample storage

**Property ID:** L561935

**Property Type:** Unit

**Garages:** 1

**Ben Spackman**

0401 326 623

ben.spackman@monavale.rh.com.au

- Perfectly complemented by its convenient location near Mona Vale Village, the B-line bus stop, and charming local cafes.

Rates:

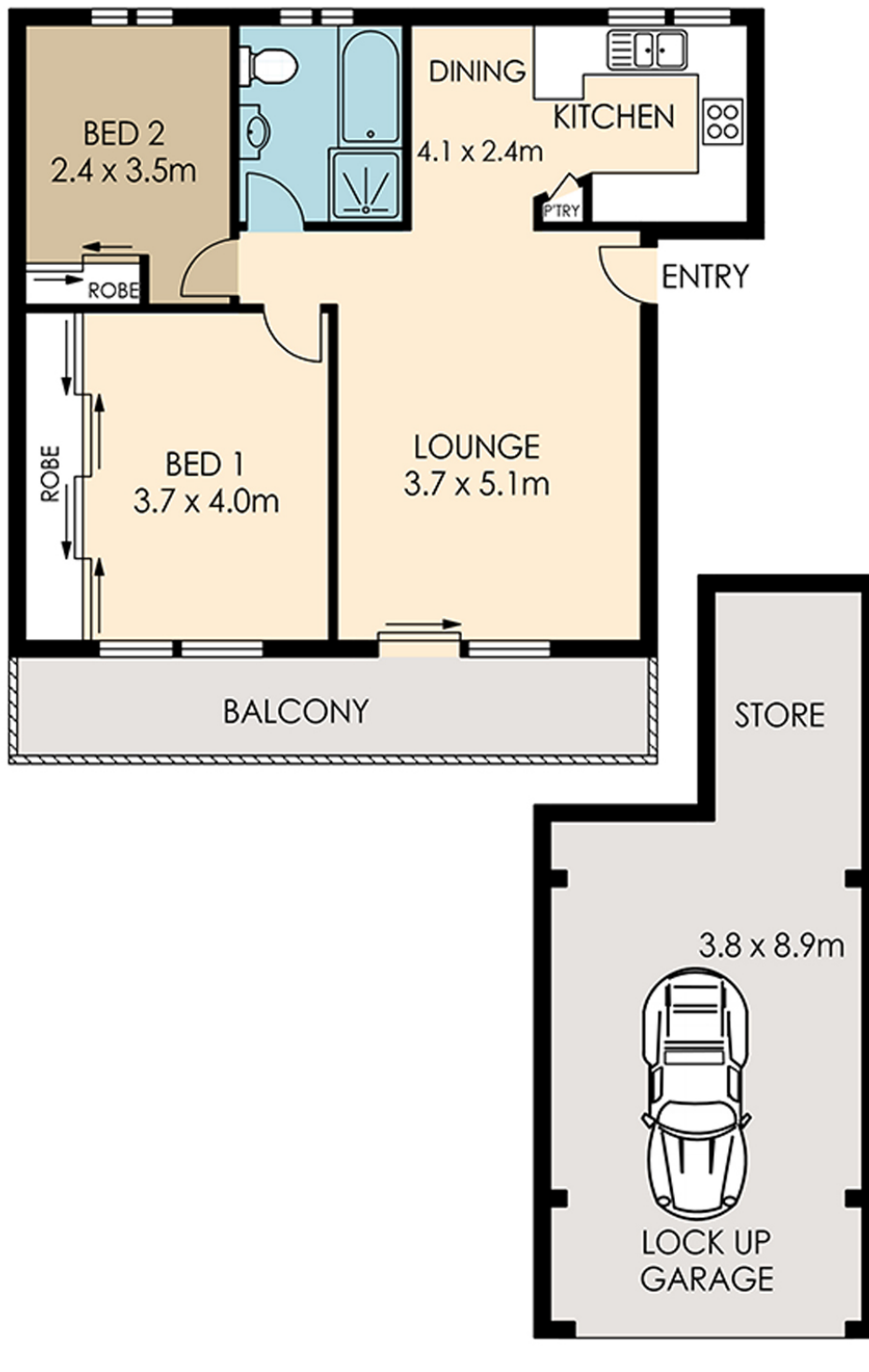
Water – \$171.41 per quarter approx.

Council – \$403.97 per quarter approx.

Strata – \$1,200 per quarter approx.

Disclaimer: All information contained in this advertisement has either been provided to us by a third-party, or otherwise and we have no reason to doubt it's accuracy but do not take any responsibility for it. All interested parties should rely upon their own inquiries as to whether or not this information is accurate.

5/16 Terrol Crescent, Mona Vale



This floor plan is provided for indicative purposes only. All information herein is gathered from sources we believe to be reliable. We cannot however guarantee its accuracy, and interested parties should make and rely on their own enquiries.

**Raine & Horne**