



Very Appealing Home with Fabulous Outdoor Entertaining!



3



1



2

6 Judith Crescent, Morphett Vale

Sold for \$620,000 (Apr 03, 2024)

Conveniently located within walking distance to shopping, schools, public transport, and local reserves, this very appealing 3BR home combines comfort & convenience in a family-friendly location.

An excellent opportunity for 1st home buyers, young growing families who love to entertain, and investors in search of an ideal investment opportunity in a popular location. A warm & inviting home featuring a fabulous undercover outdoor entertaining area, a long driveway with access through the carport to a powered shed, and all on a great size allotment with a nice private backyard for all the family to enjoy, are just some of the features which make this home a must-see.

Step inside the front entry to a well-designed layout that features 3 bedrooms all privately located off the hallway, the spacious master with a delightful large window, and also a split system air-conditioner. The neat family bathroom is well positioned to all bedrooms, as well as a separate w.c. and separate laundry.

The entry hall also flows nicely into the large lounge which features a split-system air-conditioner for year-round comfort, as well as dual-aspect windows which draw in plenty of natural light. Towards the rear of the home, the neat retro-style kitchen with generous storage adjoins the casual meals which looks out to the outdoor entertaining area.

Property ID: L16461389

Property Type: House

Garages: 1

Carports: 1

Land Area: 690.0 sqm

Alan Gobec

0403 987 853

alan.gobec@mv.rh.com.au

Outside offers some impressive features too! The large pergola and decked outdoor entertaining area provides a relaxing place where you can entertain family and friends all year round, all whilst being able to watch the kids play in the private easy-care backyard with a generous amount of lawn area.

Add a long driveway offering ample off-street parking, a carport with remote entry, and handy access to the powered shed with quality built-in bench space, and an excellent amount of external storage.

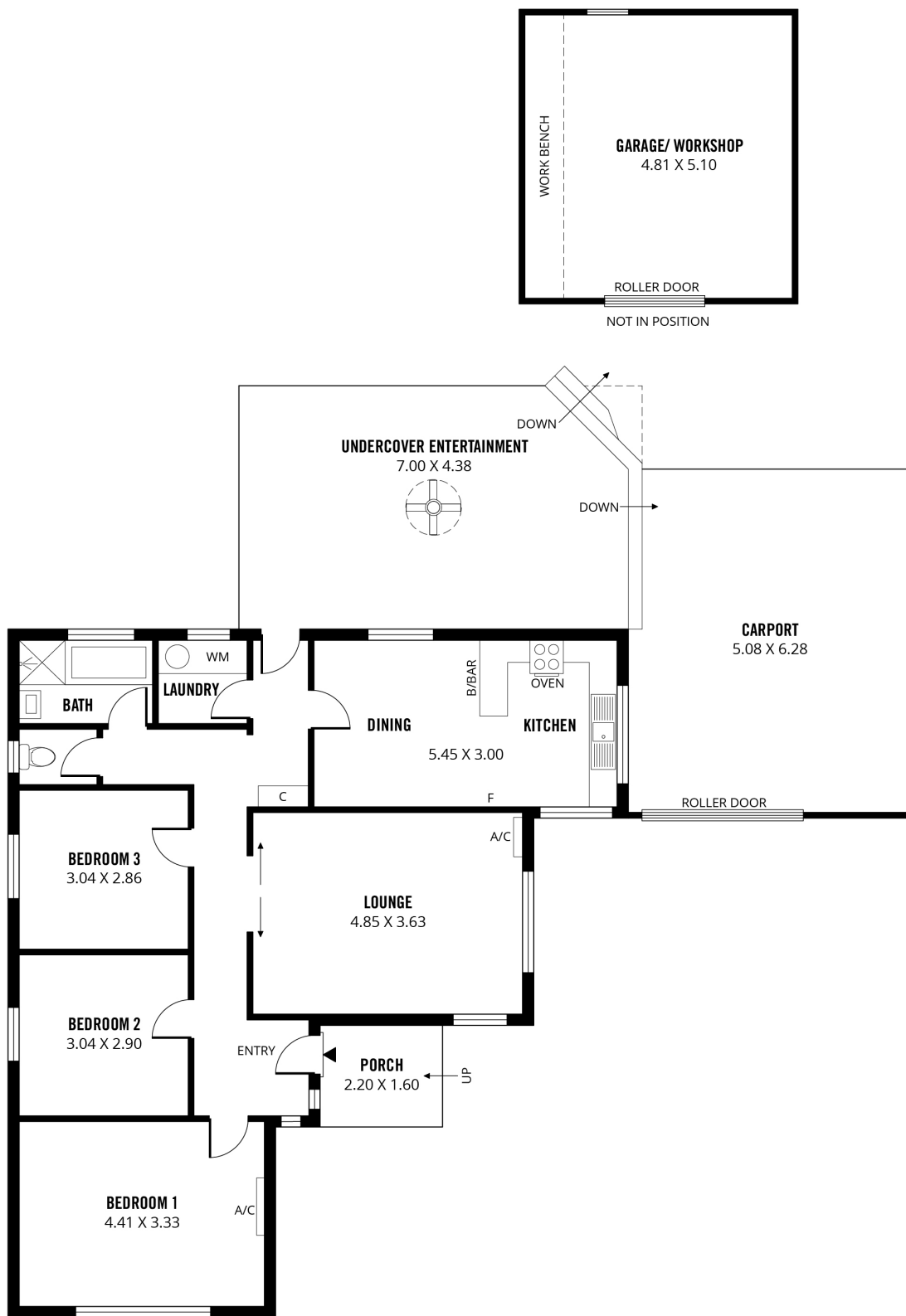
Put simply, a very appealing home for all the family, in an excellent location. Be quick!

Highlights include;

- 3 Bedrooms, main with split system a/c
- Spacious lounge with split system a/c
- Retro-style kitchen & open-plan meals
- Fabulous pergola & decked outdoor area
- Great size allotment with a private backyard
- Long driveway with ample off-street parking
- Drive through remote entry carport to powered shed
- Excellent location close to facilities

Phone Alan of Raine & Horne Morphet Vale for further details. RLA 144653.

*Neither the Agent nor the Vendor accepts any liability for any errors or omissions in this advertisement (including but not limited to the property's land size, dimensions, floor plan, build size, and condition). Any details intended to be relied upon should be independently verified by interested parties.



193m²

TOTAL

100m²

Living

32m²

Carport

27m²

Garage/
Workshop

4m²

Porch

30m²

Undercover
Entertainment



Scale in metres. This drawing is for illustration purposes only. All measurements are approximate and details intended to be relied upon should be independently verified.

Produced by **The Fotobase Group**