



New Release - Immaculate Home with Lovely Courtyard Entertaining Area - The Best of Easy-care Liv...



4



1



1

25 Blundell Street, Morphett Vale

Sold for \$600,000 (Oct 05, 2023)

Situated in a popular location convenient to schools, shops, public transport, parks, and local walking trails, this immaculately presented home on a beautifully presented easy-care allotment is ready to move in and enjoy.

From the moment you step inside, this property will feel like home. A well-designed layout offering relaxed, easy-care living, and a lovely undercover courtyard area complete with a fabulous pizza oven, provides the perfect outdoor space for year-round entertaining. Whether you're a first home buyer, a young growing family, or retirees looking to downsize without compromise, you won't want to miss this one!

Comprising 3 bedrooms + study (or 4th bedroom), 2 with built-in robes, good sized living room, and tiled open-plan family/meals with glass sliding door (with doggy door) to the paved courtyard patio. The well-equipped kitchen comes fitted with a new dishwasher, new oven, gas cooktop, generous amount of bench & cupboard space, and a nice outlook to the paved outdoor entertaining area.

Other areas include a well-presented family bathroom with bathtub, separate shower, and toilet, a separate laundry, and the convenience of a 2nd toilet. For year-round comfort, this lovely home features ducted reverse-cycle air-conditioning.

Property ID:	L465201
Property Type:	House
Carports:	1
Land Area:	420.0 sqm

Alan Gobec
0403 987 853
alan.gobec@mv.rh.com.au

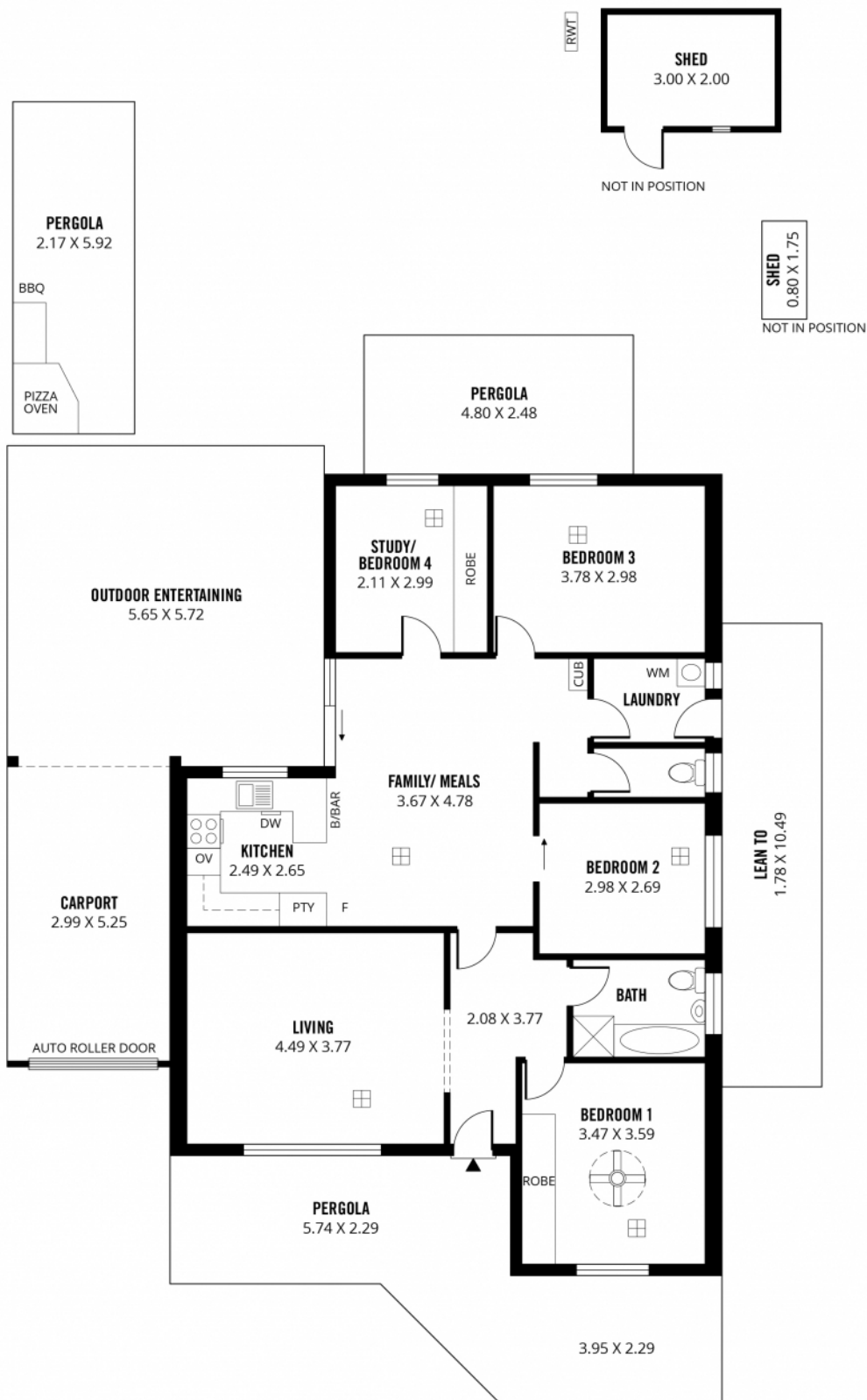
Step outside to the covered courtyard entertaining area and a wonderful private outdoor space to relax with family and friends, with a small patch of manicured lawn area featured in the delightfully landscaped low-maintenance garden. Popular extras include window roller shutters, garden shed, secure front fence and gates, and generous off-street parking including single carport UMR with remote entry roller door.

Key features;

- 3 Bedrooms + study (or 4th bedroom)
- Light-filled living room
- Open-plan family/meals with access to patio
- Well-equipped kitchen with new dishwasher & oven
- Well-presented family bathroom (plus 2nd toilet)
- Ducted reverse cycle air-conditioning
- Wonderful private courtyard area with pizza oven
- Window roller shutters (total 5)
- Delightfully landscaped easy-care allotment
- Popular location convenient to facilities

Put simply, an immaculately presented home offering the best of easy-care living. Be quick!

For further details please phone Alan of Raine & Horne Morphett Vale. RLA144653.



219m²

TOTAL

113m²

Living

8m²

Shed

16m²

Carport

50m²

Pergola

32m²

**Outdoor
Entertaining**



Scale in metres. This drawing is for illustration purposes only. All measurements are approximate and details intended to be relied upon should be independently verified.

Produced by **The Fotobase Group**