



**Exceptional Convenience and Luxury Living**



1



1



1

**301/450 Military Road, Mosman**

**Sold**

Perched within the meticulously tended 'Braebrook' building this refined one-bedroom apartment presents a lifestyle of luxury within a secure complex boasting elevator access and captivating garden vistas. Positioned prominently on the third floor, with an advantageous east-facing orientation, the residence is bathed in an abundance of morning sunlight, creating a welcoming and warm atmosphere.

Tailored towards investors or busy urban professionals this residence guarantees effortless transportation and a convenient lock-and-leave lifestyle. Its strategic location near Mosman and Cremorne villages further enhances its appeal, emphasizing utmost convenience in every aspect.

**Key Features:**

- Expansive balcony with access from both the living area and bedroom, perfect for al fresco dining
- Open-concept kitchen and living area seamlessly extending onto the spacious balcony
- Generous master bedroom with a built-in wardrobe

**Property ID:** L26245247

**Property Type:** Apartment

**Garages:** 1

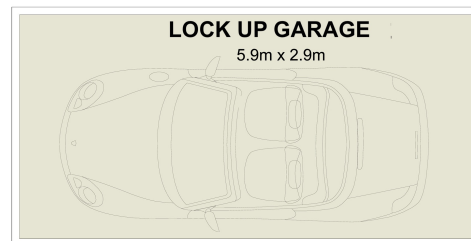
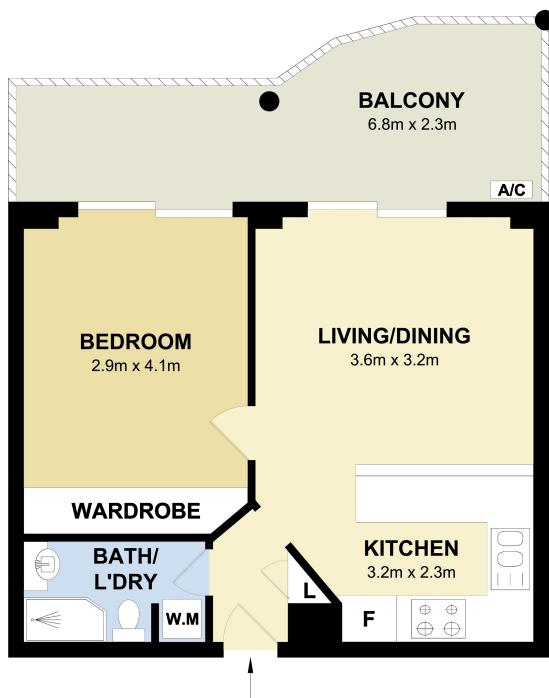
**Shann Warner**

0407 822 480

shann@rhm.com.au

- Modern bathroom with internal laundry facilities
- Secure lockup garage with additional storage space
- Prime location, just 50 meters from local shops, restaurants, and cafes. Public transportation is at your doorstep and a swift ten-minute express bus ride takes you to the city.
- Access to gym facilities and multiple communal BBQ picnic areas.

Discover the epitome of convenience and luxury in this meticulously crafted residence!



301/450 Military Road, Mosman

Measurements are approximate. Not to scale. Illustrative purposes only.  
We do not take any responsibility for any information supplied.

**Raine&Horne**  
Mosman