



## Secret Sanctuary Amongst Mosman Village



1



1



1

**3C/699 Military Road, Mosman**

**Sold Prior To Auction**

Nestled within the dynamic heart of Mosman Village, this thoughtfully renovated one-bedroom apartment presents an idyllic retreat on the tranquil third floor of the prestigious 'Camellia Gardens' building. Embraced by verdant foliage and enjoying a peaceful rear position, this residence epitomises convenience with its seamless access to an abundance of boutique shops and transportation links, complemented by the added luxury of undercover parking space with direct entry to the entrance foyer and lift.

### Key Features:

- Generously proportioned bedroom featuring built-ins and a serene private outlook
- Recently upgraded en-suite bathroom boasting heated flooring and towel rack for enhanced comfort
- Expansive open-plan living and dining area flowing onto a spacious balcony, offering lush green views
- Modernised kitchen showcasing stylish stone bench space and an integrated fridge for contemporary living

**Property ID:** L26769989

**Property Type:** Apartment

**Open Parking:** 1

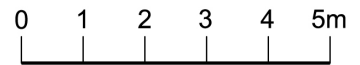
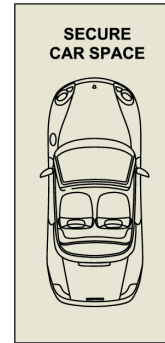
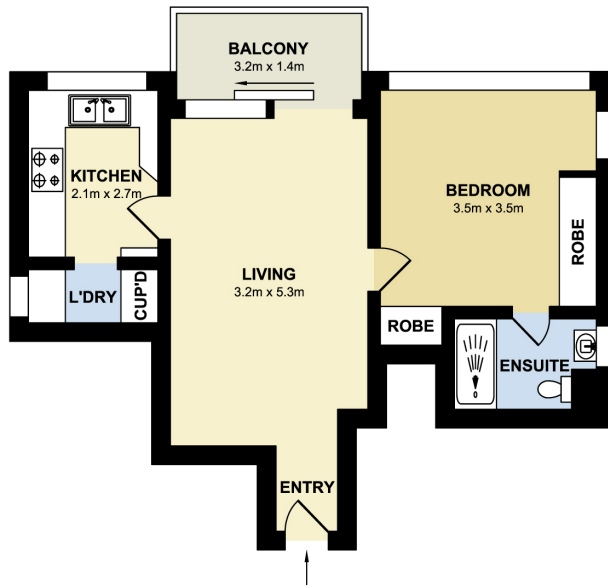
**Land Area:** 65.0 sqm

**Shann Warner**

0407 822 480

shann@rhmc.com.au

- Undercover parking ensuring convenient immediate, level access to the entrance foyer and lift
- Separate internal laundry equipped with a washer/dryer for added convenience
- Well-maintained security building with lift and intercom access, ensuring peace of mind
- Enjoy complete privacy and tranquility overlooking the Alan Border Oval
- Proximity to an array of amenities including shops, schools, esteemed restaurants, cafes, and public transport options
- Experience the epitome of modern living in Mosman Village, where convenience meets tranquility in this meticulously crafted apartment.



**3C/699 Military Road, Mosman**

Measurements are approximate. Not to scale. Illustrative purposes only.  
We do not take any responsibility for any information supplied.

**Raine&Horne**  
Mosman