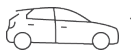




Leafy retreat in premier location



1



1

14/6 Avenue Road, Mosman

Sold Prior To Auction

Discover this spacious studio apartment located on the top floor with a sunny aspect and leafy outlook.

A short stroll to Avenue Road's vibrant shops and cafes, Mosman Bay Wharf, Reid Park and harbour-side walking trails, this apartment combines convenience and lifestyle. Everything is at your door!

- Two Balconies: Enjoy added ventilation and outdoor space with two balconies.
- Open Plan Living: A large, oversized living area with access to both balconies, featuring built-ins.
- Separate Kitchen and Laundry: A closed-off kitchen and attached laundry for added convenience.
- Prime Location: Just a 5-minute walk to Mosman chic cafes and designer boutiques.
- Ample Parking: Large undercover car space.
- Low Maintenance Strata – approx. \$621 p/q

Property ID: L27720482

Property Type: Studio

Building / Floor Area: 66

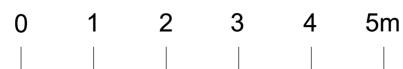
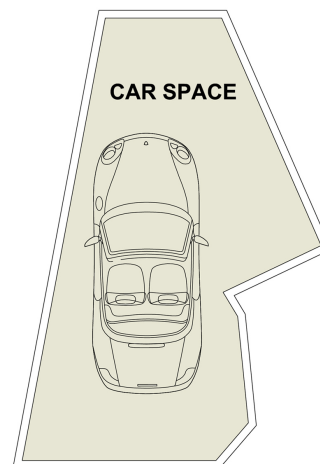
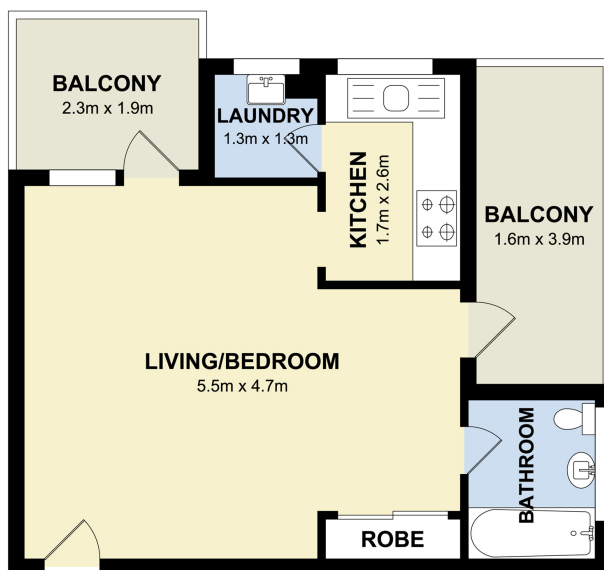
Carports: 1

Shann Warner

0407 822 480

shann@rhmc.com.au

This apartment is perfect for the savvy investor or young professional looking for a lock-and-leave lifestyle with direct access to the CBD.



14/6 Avenue Road, Mosman

Measurements are approximate. Not to scale. Illustrative purposes only.
We do not take any responsibility for any information supplied.

Raine&Horne
Mosman