

## Modern and Convenient Living in the Vibrant Mosman-Cremorne Locale



2



1



1

**5/137 Belmont Road, Mosman**

**Sold Prior To Auction**

Nestled in a quiet rear-of-block position with a perfect north aspect, this beautifully renovated apartment offers a serene retreat. Enjoy the vibrant café culture and boutique village atmosphere of both Mosman and Cremorne Junctions, making this residence an unparalleled opportunity to embrace tranquil living at its finest.

### Features

- The bright living area opens to a north-facing balcony, amplifying the sense of spaciousness and natural light.
- State-of-the-art kitchen featuring integrated electrical appliances and laundry facilities.
- Two double bedrooms with built-in wardrobes and stylish plantation shutters.
- An immaculate renovated bathroom providing a luxurious and refreshing space.
- A prime location, approx. 100 meters to the nearest bus stop with direct routes to the CBD or Manly.
- Residents have easy access to Mosman Village and Cremorne's array of cafes, shops,

**Property ID:** L28316824

**Property Type:** Apartment

**Carports:** 1

**Euan Gamkrelidze**

0402 466 066

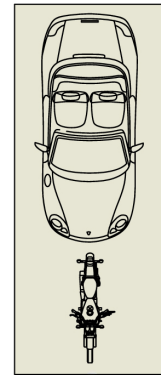
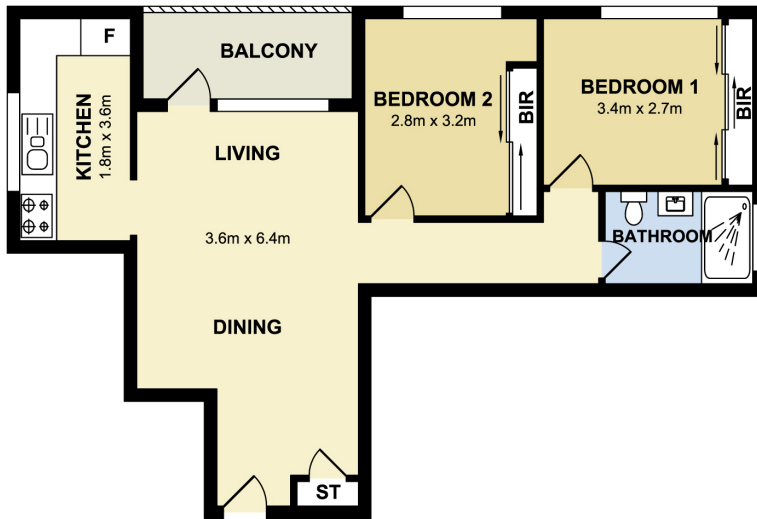
evang@lms.rh.com.au

restaurants, cinema, and bars, ensuring a wealth of amenities nearby.

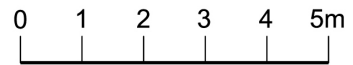
- Large undercover car space on title.
- The boutique building, with only 15 units, creates a community-focused and exclusive living environment.
- Secure block, providing peace of mind.

Perfect for first-time buyers seeking an ideal entry into the Mosman market, investors looking for a standout opportunity for strategic investment, or executive buyers desiring convenient and stylish living close to all amenities.

Discover the perfect blend of tranquility and convenience in this exceptional two-bedroom apartment, offering a rare chance to enjoy the best of Mosman living.



**CAR SPACE**  
2.5m x 6.0m



5/137 Belmont Road, Mosman

Measurements are approximate. Not to scale. Illustrative purposes only.  
We do not take any responsibility for any information supplied.

**Raine&Horne**  
Mosman