



Main Road Investment Opportunity



140sq
m



100 Adelaide Road, Murray Bridge

Sale: \$550,000 + GST (if applicable)

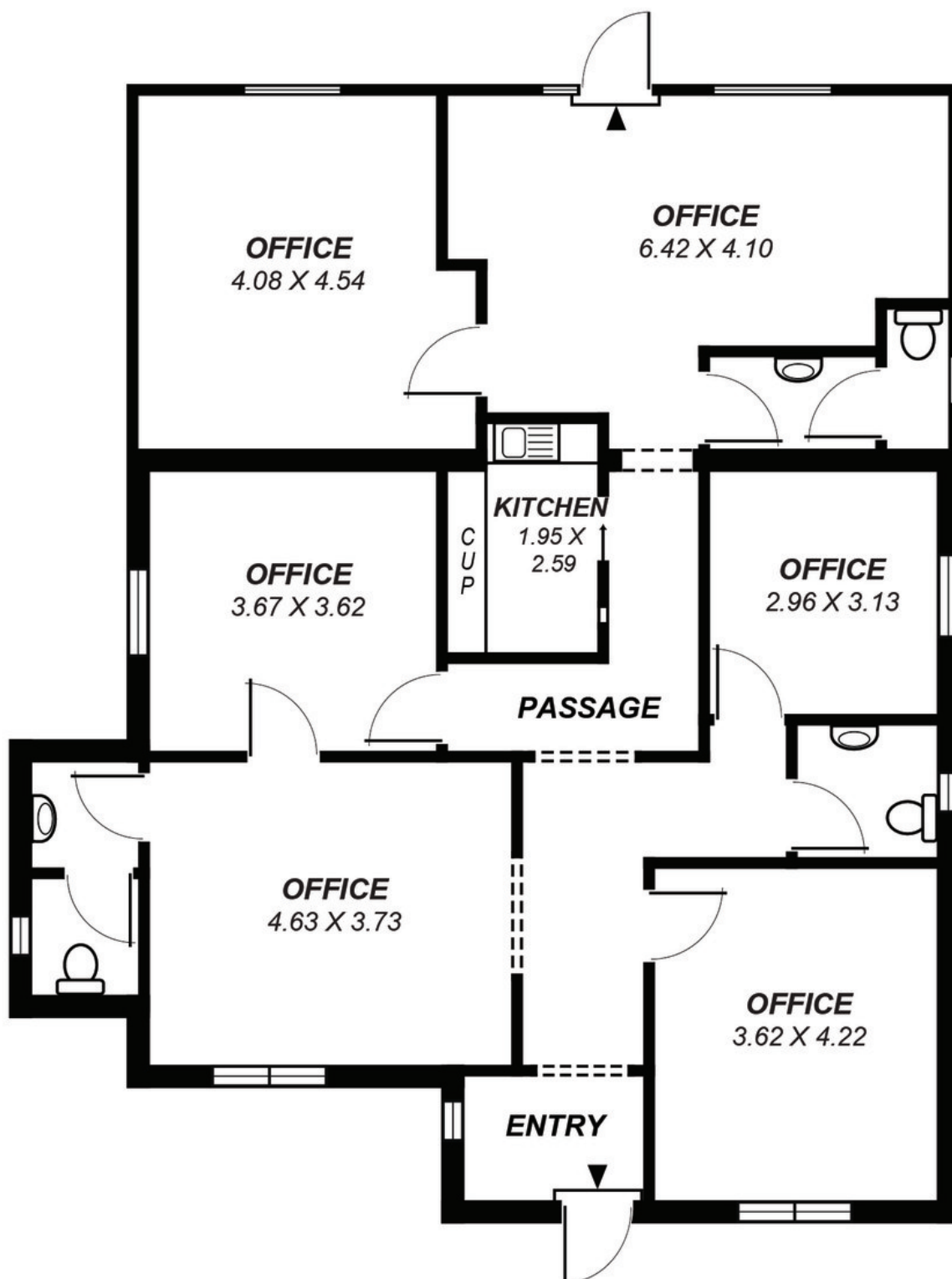
This unique office space is comprised of 4 large private offices, 2 open plan spaces, kitchenette and 3 toilets (including disability). With main road frontage and close to many major retail giants, this property has off street car parking at the rear complete with disability car parking at the front. Purchase as an investment with tenants until November 2024. This property presents neatly and is well worth an inspection – Contact our office today 08 8532 3833

Property ID:	L15057669
Property Type:	Offices
Building / Floor Area:	140
Land Area:	700.0 sqm

John DeMichele

0417 811 435

info@murraylands.rh.com.au



*This drawing is for illustration purposes only .
All measurements are approximate and details intended
to be relied upon should be independently verified.*

Area	m ²
Living:	131.71
Total:	131.71