



Impeccable lifestyle haven overlooking gorgeous Redfern Park



1



1



1

**66/249-259 Chalmers Street, Redfern**

**Auctioned for \$1,050,000 (Aug 10, 2024)**

Showcasing exemplary design, chic contemporary interiors, and breathtaking outlooks over the stately Moreton Bay Figs framing beautiful Redfern Park, this exquisite apartment delivers an idyllic lifestyle sanctuary in the highly regarded 'Moreton on the Park'. Open to the east and bathed in morning sunshine, it features a clever layout offering a spacious open-plan living and dining area flowing to a sun-washed entertainer's balcony. There is a galley stone kitchen equipped with stainless steel gas appliances, while the well-sized bedroom is appointed with a built-in wardrobe. Further highlights include a sizeable study, a chic fully tiled bathroom and an internal laundry while enjoying direct lift access to the lush communal gardens and swimming pool as well as exclusive use of a secure basement car space. Its unbeatable setting is within 70m of Woolworths and 300m to Redfern Street's vibrant shops, bars, and eateries plus 750m to Redfern Station.

- Clever layout with floor-to-ceiling glass framing idyllic leafy vista
- Wonderfully spacious open living/dining bathed in natural light
- Sliding glass doors open to a deep east-facing sunlit balcony
- Galley stone kitchen, s/steel gas appliances, integrated dishwasher

**Property ID:** L21489960

**Property Type:** Apartment

**Building / Floor Area:** 67

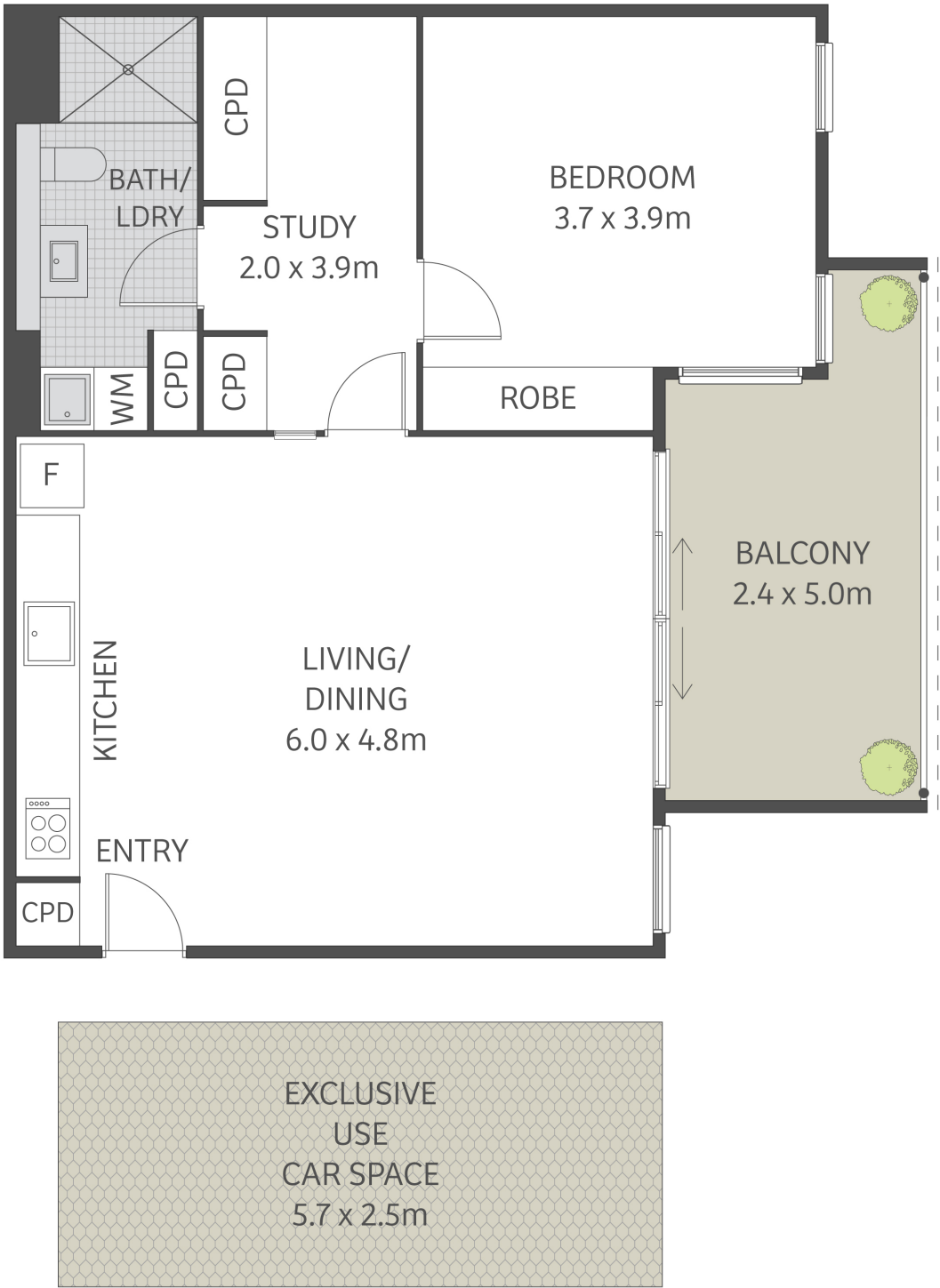
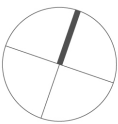
**Open Parking:** 1

**Duncan Gordon**

0414 349 669

Duncan.Gordon@newtown.rh.com.au

- Well-sized bedroom with built-in wardrobe, vast custom storage
- Sizeable study, stylish fully tiled bathroom, and internal laundry
- Convenient lift access to secure exclusive use of car space.
- Directly opposite beautiful Redfern Park, 70m to Woolworths
- 300m to Redfern Street's vibrant village shops, bars and eateries
- 750m to Redfern Station, buses
- 2.4km walk to city Town Hall



This floor plan is for marketing purposes and is to be used as a guide only.  
All efforts have been made to ensure its accuracy although interested parties are urged to rely on their own enquiries.