

Freshly updated home, private corner block, wide leafy street



4 1

## 36 William Street, Marrickville

### Auctioned

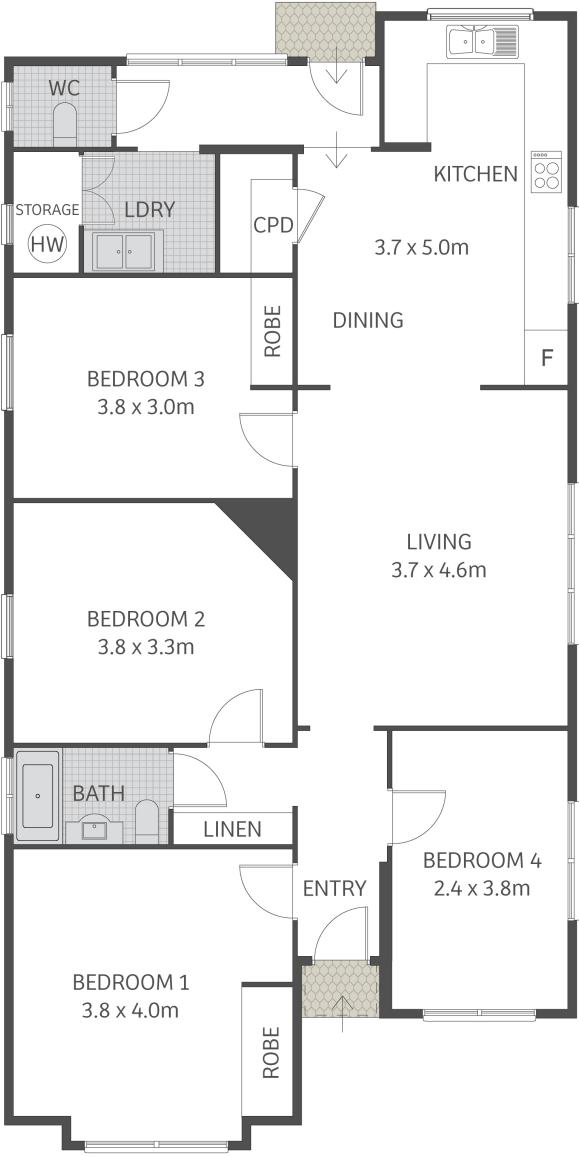
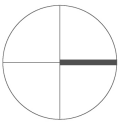
Generous proportions, freshly update interiors and a community-oriented address all combine to provide an idyllic lifestyle sanctuary in this warm and welcoming home. Freestanding and occupying a substantial corner position in a wide tree-lined street, it reveals a free-flowing layout with light and airy interiors enhanced by soaring ceilings, plantation shutters and polished timber floorboards. It features spacious living and dining areas and a streamlined kitchen, while interiors spill out to a low maintenance sunny backyard in private garden surrounds. It is placed 800m to Newington College and Henson Park, while 900m to Stanmore Station, 650m to Petersham shops and eateries and 2km to Marrickville Metro.

- Freshly updated interiors, high ceilings, polished timber floors
- Generous proportions with free-flowing lounge and dining areas
- Streamlined kitchen, electric cooktop, s/steel dishwasher, walk-in pantry
- Low maintenance backyard with level lawn amid private hedged garden
- Four well-proportioned bedrooms, two appointed with built-in wardrobes
- Bright and airy bathroom, combined bath and shower, large laundry with w/c

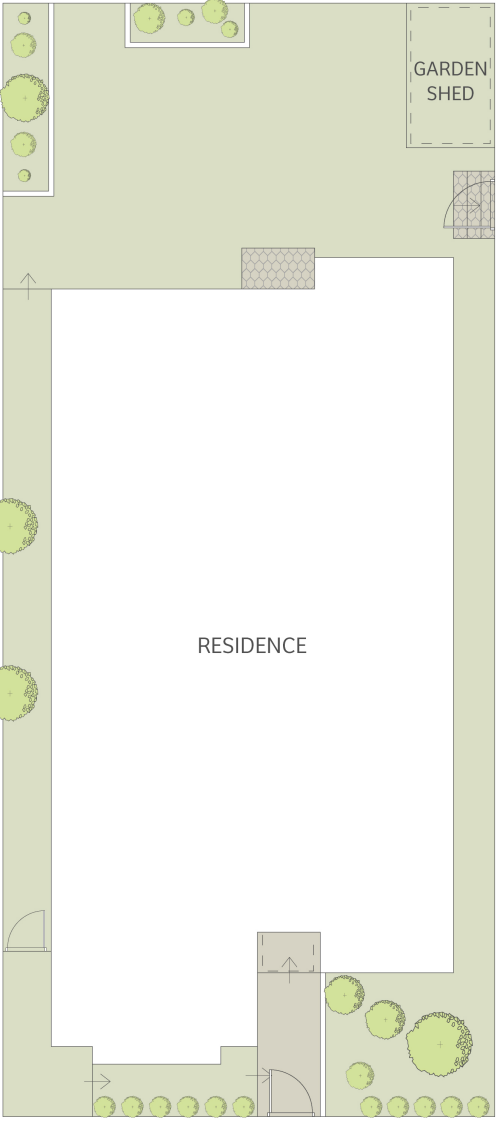
**Property ID:** L425913  
**Property Type:** House  
**Land Area:** 221.0 sqm

**Michael Harris**  
 0406751631  
 Michael.Harris@newtown.rh.com.au

- 800m to Newington College, 650m to Petersham shops, 900m to Stanmore Station
- 900m to Henson Park, 1.8km to Enmore Road shops, 2km to Marrickville Metro



GROUND FLOOR



SITE PLAN (NOT TO SCALE)

This floor plan is for marketing purposes and is to be used as a guide only.  
All efforts have been made to ensure its accuracy although interested parties are urged to rely on their own enquiries.