

Stylish contemporary terrace in a wide tree-lined cul-de-sac



3



3

9 Burren Street, Erskineville

\$1,500 per week

In a peaceful pocket of Erskineville, this beautifully appointed 3 bedroom full brick terrace holds a coveted position in a wide tree-lined cul-de-sac just behind the buzzing neighbourhood hub. Promising lifestyle excellence and ultra-convenience, it is exceptionally positioned within 150m of Erskineville Station, village shops, popular bars and eateries, while 350m to Woolworths and city buses and 600m to King Street's attractions.

The property:

- Generously proportioned and designed to maximise natural light, features a clever free flowing layout
- Private north-east facing sun washed backyard, easycare garden
- Modern stone kitchen with stainless steel appliances & breakfast bar
- Open plan living/dining areas enjoy a seamless transition to superb covered alfresco entertaining
- Bedrooms with floor-to-ceiling built-in robes, ducted air conditioning
- Stylish bathrooms, main with ensuite and study area, internal laundry

Property ID:

R3381961

Property Type:

House

Natasha Bakopoulos

0450 736 825

natasha.bakopoulos@newtown.rh.com.au

- Upper level bedrooms open to private balconies with leafy outlooks

The details:

Lease term 13 months

Available Now

The neighbourhood:

Sitting on the fringes of some of Sydney's most vibrant hubs, Erskineville is a small hipster enclave that has all the trimmings of inner-city living. Highly prized for its character homes, intimate village, enduring pub culture and burgeoning café scene, Erskineville moves with the times while staying true to its working class roots. Source-Sitchu.com.au

The inspection:

To book a time to inspect, simply click on 'Email Agent' and register your interest. By registering, you will be instantly informed of any updates, changes or cancellations for an open home or your appointment.

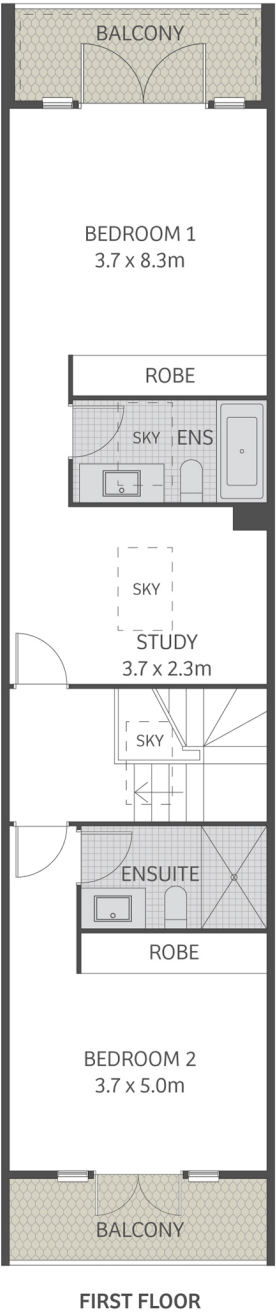
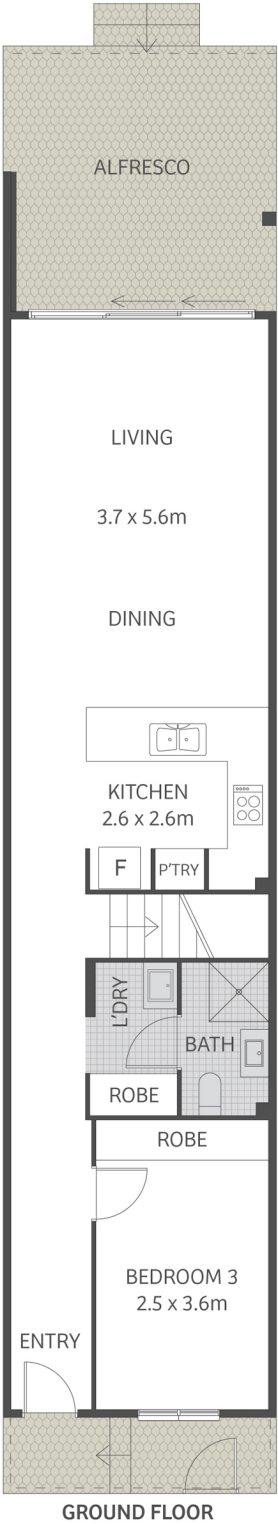
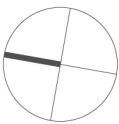
Natasha Bakopoulos

0450 736 825

Raine&Horne Newtown

rh.com.au/newtown

8596 3555



This floor plan is for marketing purposes and is to be used as a guide only.
All efforts have been made to ensure its accuracy although interested parties are urged to rely on their own enquiries.