



Enchanting Jade Escape



8 Jade Place, Pearl Beach

Sold for \$1,440,000 (Feb 21, 2024)

Discover the perfect blend of nature and comfort in this 5-bedroom home nestled amongst the trees. Immerse yourself in the warmth of wood finishings throughout, creating a cozy and inviting atmosphere.

As you ascend the 87 steps to your retreat, you'll feel a sense of serenity and exclusivity. The lush surroundings provide a natural haven, ensuring privacy and tranquillity. This unique property offers a seamless connection to nature, making it an ideal haven for those seeking a harmonious lifestyle.

Indulge in breathtaking, sweeping views that unfold before you. Each window frames a mesmerizing panorama, offering an uninterrupted visual feast that encapsulates the essence of the surroundings.

Enjoy the convenience of being just a 400-meter walk away from beach access, allowing you to embrace the coastal lifestyle with ease. Whether you're entertaining guests or savouring quiet moments, the formal dining and living spaces provide a sophisticated backdrop for every occasion.

Don't miss the opportunity to make this distinctive residence your own, where the beauty of nature meets the elegance of home. Welcome to a life of comfort and style amidst the trees.

Property ID: L25676354

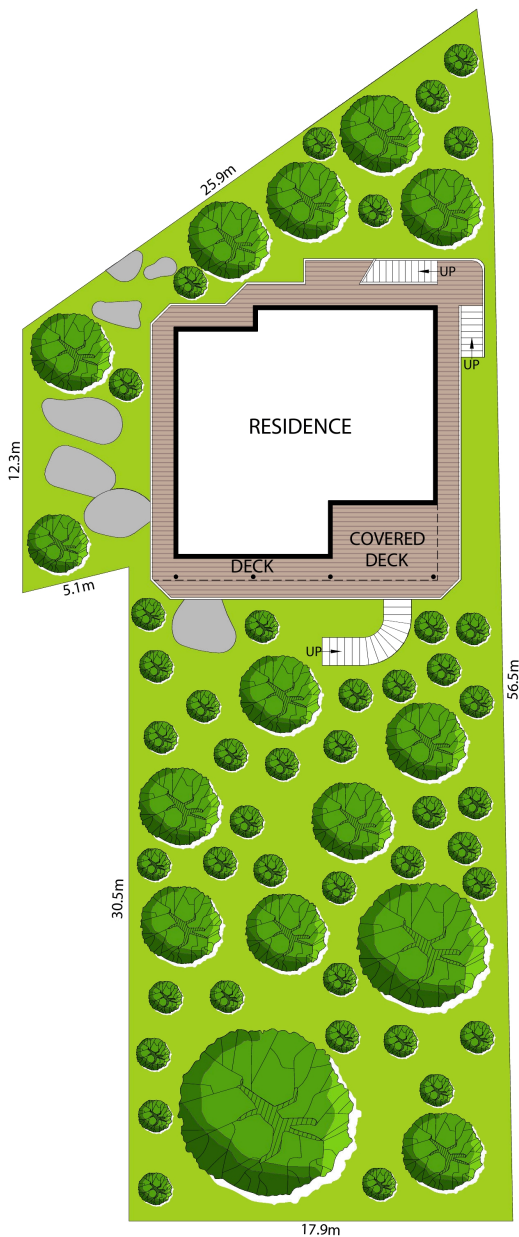
Property Type: House

David Keenan

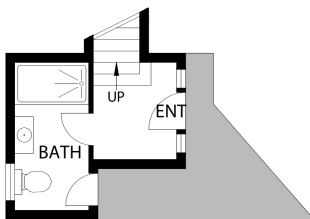
0410 668 800

david.keenan@peninsula.rh.com.au

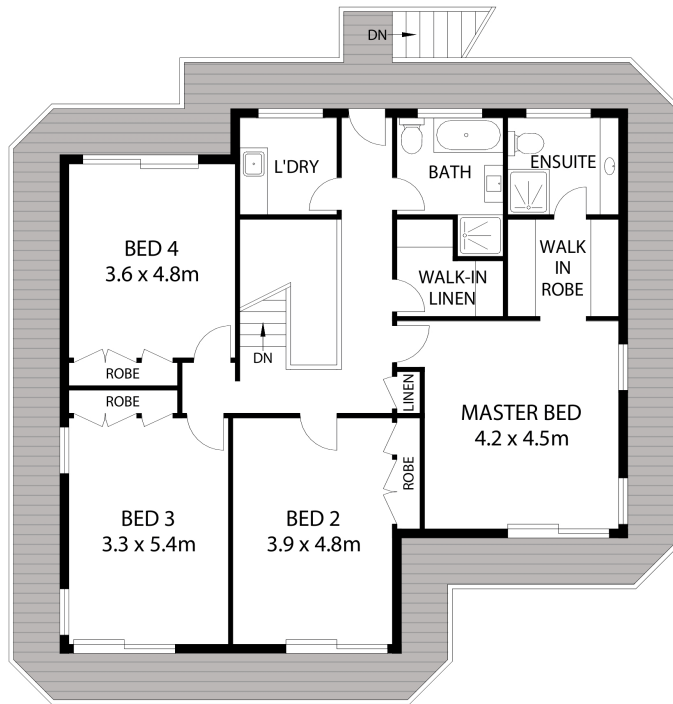
Disclaimer: We have obtained all information herein from sources we believe to be reliable; however, we cannot guarantee its accuracy. Prospective purchasers are advised to carry out their own investigations.



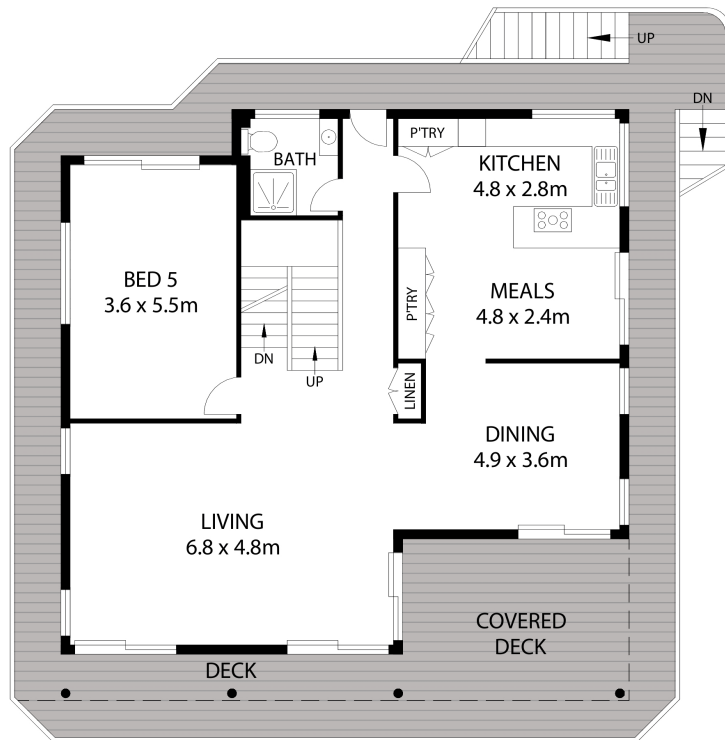
SITE PLAN
(Not to Scale)



ENTRY LEVEL



UPPER LEVEL



MIDDLE LEVEL

All dimensions herein are approximate and gathered from sources believed to be reliable. Whilst every effort is made for the accuracy of our floor plans, interested parties should rely on their own enquiries.

Raine&Horne®

8 JADE PLACE,
PEARL BEACH



Internal Area: 249m²
External Area: 125m²
Land Area: 957m²