



SUPERB FAMILY HOME AT MANOR LAKES



4



2



2

33 Kinglake Drive, Manor Lakes

Sold for \$625,000 (Jul 09, 2024)

Welcome to 33 Kinglake Drive! This stunning 4-bedroom, 2-bathroom house is the perfect family home, offering plenty of room for everyone. Situated on a generous 448 sqm block of land right at the heart of Manor Lakes, this top-notch residence will surely tick all the boxes. From the beautifully landscaped low-maintenance front yard, step into the modern interiors. The master bedroom features an ensuite with a single vanity and a walk-in robe. Three generously sized bedrooms, each with a built-in robe (BIR), are served by the common bathroom for functionality. The rumpus room can serve as a second living space or be converted to a fifth bedroom. Further inside is the spacious open-plan main living and meals area. The retro-style kitchen is a delight, featuring a built-in pantry, 900mm stovetop, modern stainless steel appliances, gorgeous downlights and lots of cupboard space.

Outside the main living area is a functional backyard – complete with a decked pergola, a large wooden table, and benches – perfect for entertaining. With artificial turf and plant boxes throughout, one can enjoy the tranquil joy of gardening while freeing from the pains of constant lawn care. Additional highlights of this residence include a double garage with a remote door and internal access, downlights, ducted heating, a split system in the living room, tiles in the common areas, and carpet in the bedrooms and the rumpus room.

Ideally located nearby are amenities including the Wyndham Vale Train Station, bus stops, schools, and parklands. The Manor Lakes Shopping Centre – with tons of shops, restaurants,

Property ID: L26425595

Property Type: House

Building / Floor Area: 193

Garages: 2

Land Area: 448.0 sqm

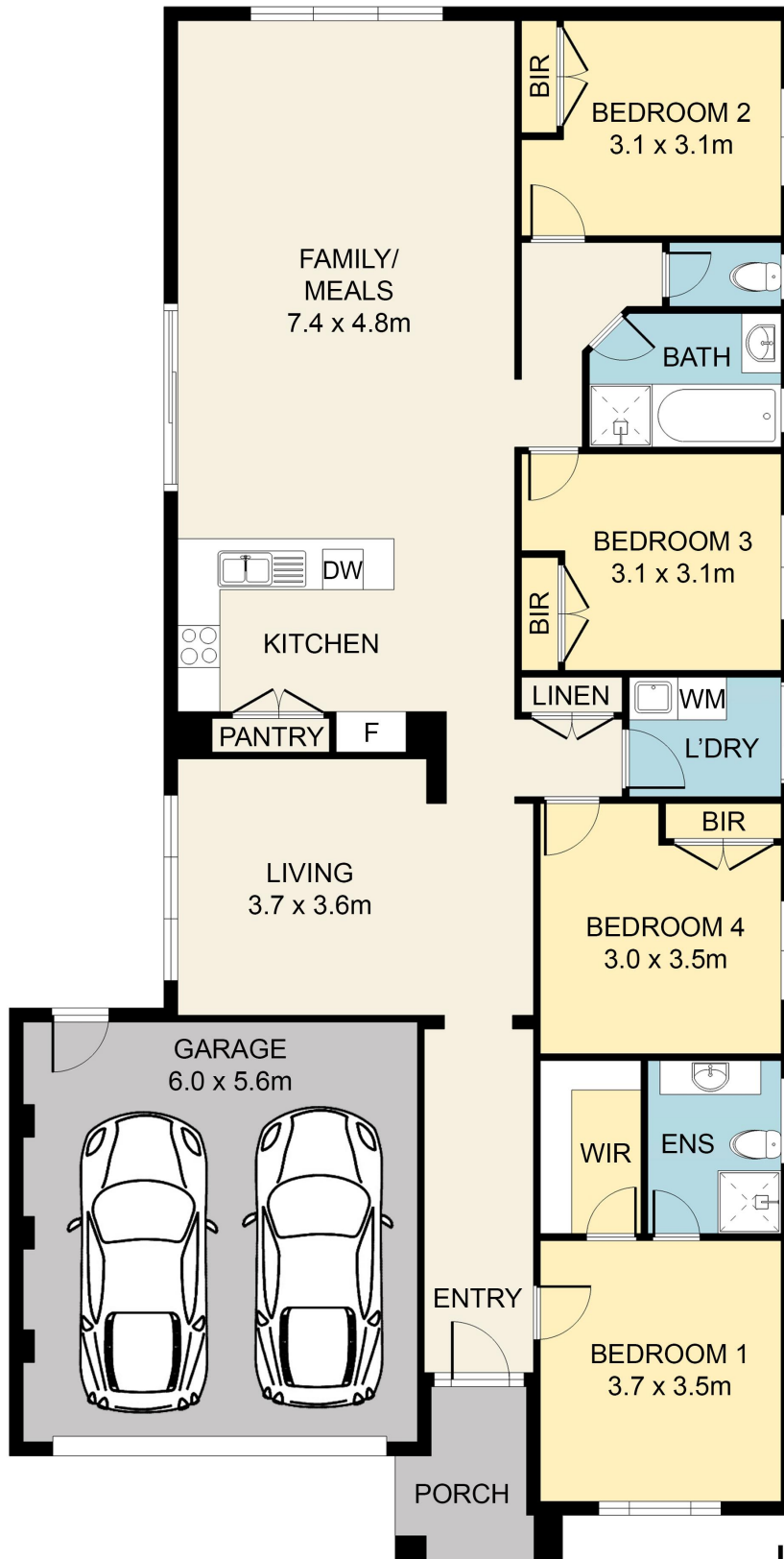
Lyn Castillo

0414 575 349

lyn.castillo@pointcook.rh.com.au

groceries and so much more – is a mere 2 minutes away by car. Don't miss out on this rare opportunity, call Lyn now on 0414575349 to inspect and buy!

*Access from Ballan Road is currently closed. Go to the property from Manor Lakes Boulevard for easier access.



Internal: 189.4 sqm

External: 4.0 sqm

33 Kinglake Drive, Wyndhamvale

Disclaimer: Floor Plan measurements are approximate and are for illustrative purposes only. While we do not doubt the floor plans accuracy, we make no guarantee, warranty or representation as to the accuracy and completeness of the floor plan