



FIRST HOME, DOWNSIZE, OR INVESTMENT - THIS IS THE PERFECT CHOICE!



3



2



1

2/39 Springleaf Road, Tarneit

Sold

Look no further, this beautiful and modern 3-bedroom family home is one for the books. This property has an open design layout connecting the living, dining, and kitchen areas, exuding an aura of comfort and convenience. The master bedroom features a walk-in robe and a top-notch ensuite with floor-to-ceiling tiles and quality furnishings. The additional two bedrooms, each with BIR, is served by a common bathroom complete with a freestanding bathtub, shower, floor-to-ceiling tiles, and quality furnishings. The kitchen features quality stainless steel appliances including a 600mm stovetop and oven, lots of cupboard space, downlights, and a Caesar stone benchtop.

This house also offers ample outdoor spaces. From the low-maintenance pocket front yard to the beautiful backyard with a large, timber-decked alfresco for outdoor entertainment, artificial turf, and a garden shed. Locked up single garage for the car, a split system in the main living space, ducted heating, and pet-friendly timber flooring for easy maintenance.

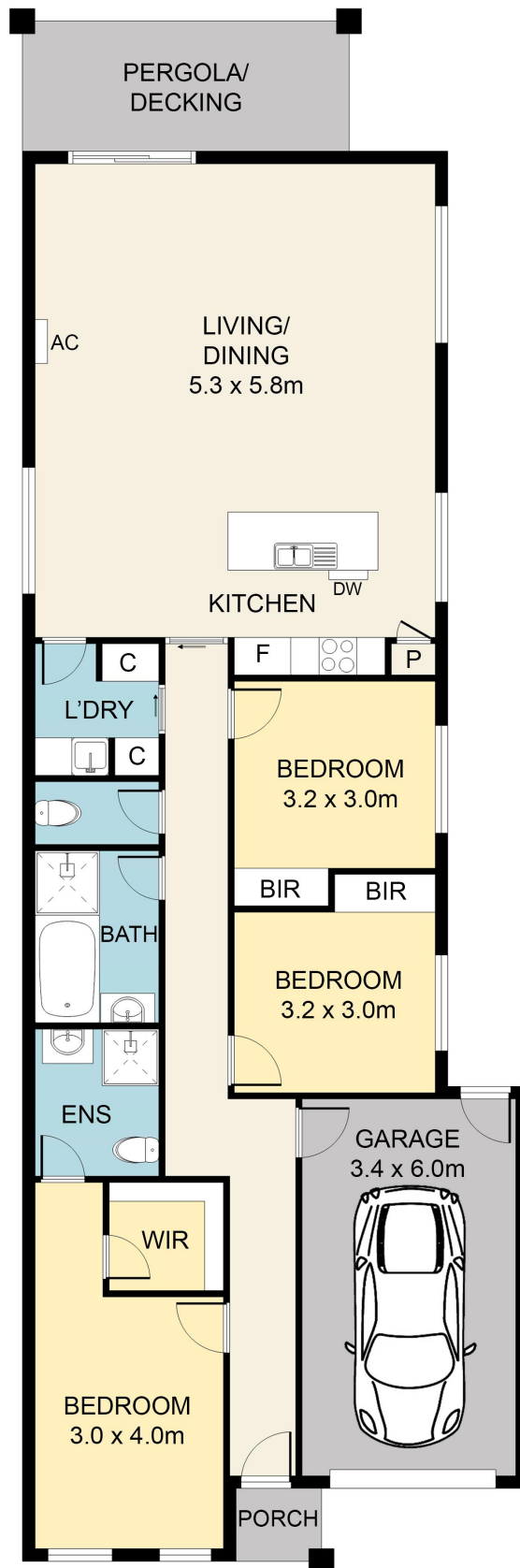
The flawlessness of this house is only matched by its unparalleled location, just around the corner are the Davis Creek Primary School, Islamic College of Melbourne, and Good News 1P12, 2 Lutheran College. Other schools like Thomas Carr College, Baden Powell P-9 College, St. Francis Assisi Catholic Primary School, Tarneit P-9 College, and St. James the Apostle School are just a few minute's drive away. The Tarneit West Village Shopping Centre – with specialty shops, medical centers, restaurants, and more – is just a short minute away by

Property ID:	L27039749
Property Type:	Unit
Building / Floor Area:	149
Garages:	1
Land Area:	255.0 sqm

Lyn Castillo
0414 575 349
lyn.castillo@pointcook.rh.com.au

walking. Numerous bus stops linking to Tarneit Train Station and other amenities, provide a comfortable commuting experience.

Don't miss out on this fantastic opportunity – contact Lyn now at 0414575349 to arrange a viewing and buy!



Internal: 149 sqm
External: 11 sqm



2/39 Springleaf Road, Tarneit

Disclaimer: Floor Plan measurements are approximate and are for illustrative purposes only. While we do not doubt the floor plans accuracy, we make no guarantee, warranty or representation as to the accuracy and completeness of the floor plan