



## Exclusive Leisure Living at Large Family Home



4



2



2

## 12 Jacana Crescent, Williams Landing

Sold

FIVE Living Spaces and Four Bedrooms in One Stunning Address!

We are proud to offer for the first time 12 Jacana Crescent, Williams Landing – a large single-level 4 bedroom, 2 bathroom house that is sure to impress. This spacious property boasts four bedrooms, five living spaces, two ensuites, two toilets, and a double garage, providing ample space for a growing family or those who love to entertain.

Situated on a generous 544 sqm block, this beautifully designed 31-square home offers a modern lifestyle that exudes comfort at every level. From the well-landscaped front gardens with timber decked porch and stairway, step into the expansive interiors with a wide hallway and many living spaces. The four carpeted bedrooms serve as an oasis of rest. The master has a big walk-in robe (WIR) and ensuite featuring a double vanity, large shower, and separate toilet. The rest of the bedrooms are served by a powder room and the common ensuite with a single vanity, bathtub, and shower. The fully-kitted modern kitchen is a true delight, featuring a large L-shaped island Caesar stone benchtop, exquisite downlights, 900mm stovetop and oven, canopy rangehood, glass splashback, a lot of cupboard storage, and a huge walk-in pantry.

But what truly sets this lovely house apart from the rest are its five living spaces, offering lots of opportunities for entertainment and living that work-play lifestyle. The retreat near the

**Property ID:** L28068518

**Property Type:** House

**Building / Floor Area:** 287

**Garages:** 2

**Land Area:** 544.0 sqm

**Lyn Castillo**

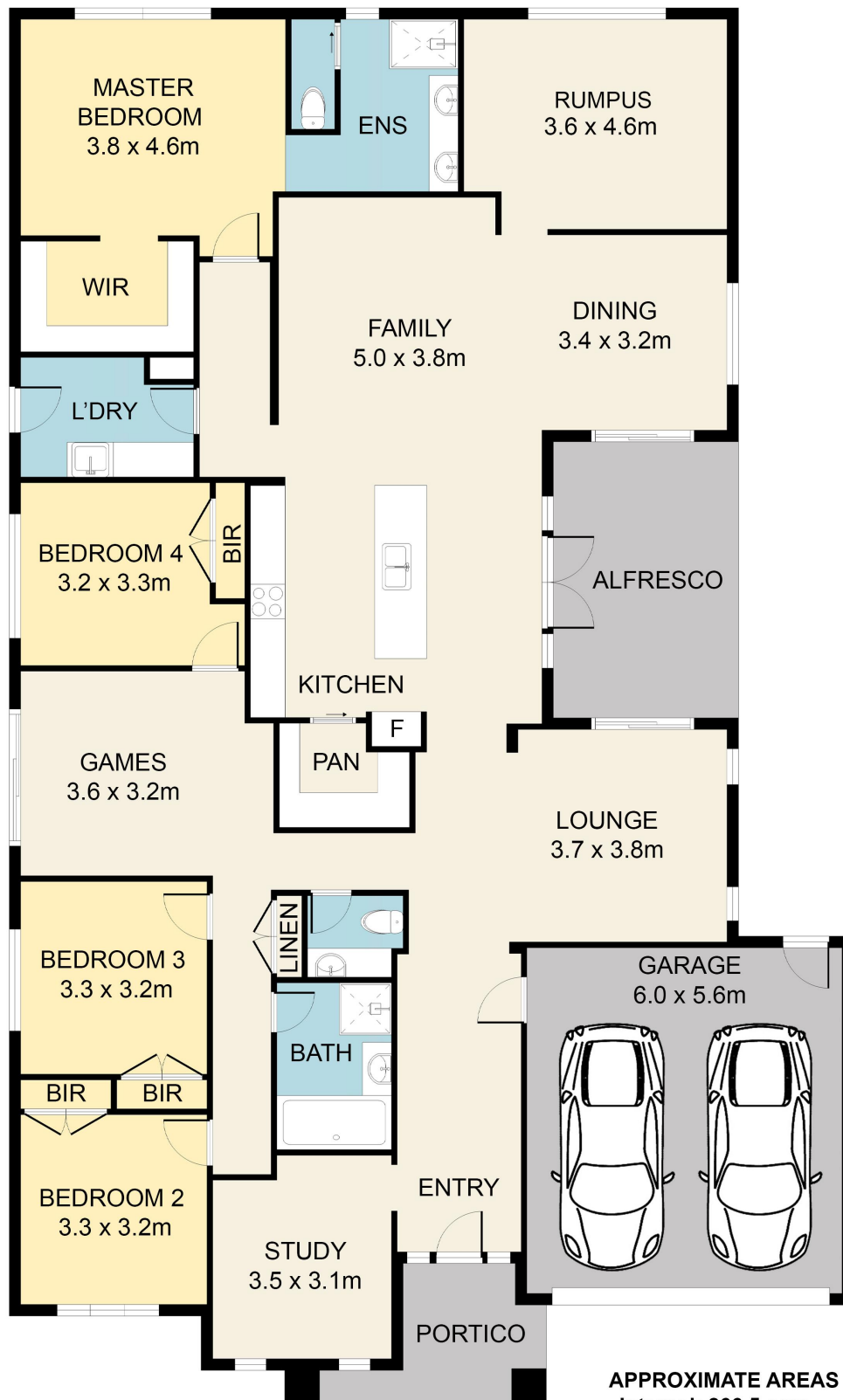
0414 575 349

[lyn.castillo@pointcook.rh.com.au](mailto:lyn.castillo@pointcook.rh.com.au)

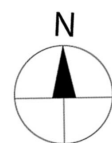
bedrooms offers solace and privacy for family entertainment. The study is perfect for home offices or those with a work-from-home (WFH) setup. The rumpus room provides access to the backyard while the lounge and main living area are excellent for entertaining guests and quality family living. These spaces are seamlessly connected through an open floor plan configuration. The outdoor areas are perfect for enjoying the sunshine and fresh air, from the low-maintenance backyard with artificial turf to the covered alfresco with timber decking. Other notable features include ducted heating, evaporative cooling, blinds and curtains throughout, a remote-controlled double garage, and a combination of carpet flooring (for the sleeping quarters, retreat, and rumpus) and timber flooring in the hallway and dining/meal areas.

This lovely home sits at a prime location, with the following amenities within walking distance: McDonald's and Oporto (DINING); Busy Bees Childcare, Westbourne Grammar School, Doherty's Creek P9 College, and Al Taqwa Islamic College (EDUCATION); Forsyth Medical Center and Palmers Medical Center (HEALTH); and Forsyth and Wyndham Waters parks and lake vistas (RECREATION). It is just off Forsyth Road, with M1 Freeway access, Williams Landing Shopping Center, and Train Station just 5 minutes away by driving. Bus stops off Forsyth Road and Sayers Road are also just around the corner

Don't miss out on this fantastic opportunity to own a beautiful property in a sought-after location. Contact Lyn now at 0414575349 for price guide and to arrange a viewing today.



## 12 Jacana Cres, Williams Landing



Disclaimer: Floor Plan measurements are approximate and are for illustrative purposes only. While we do not doubt the floor plans accuracy, we make no guarantee, warranty or representation as to the accuracy and completeness of the floor plan