

Four Bedroom Residence Plus Self Contained Studio

Raine&Horne



4



4



1

39 Prince Edward Avenue, Earlwood

Sold for \$2,260,000 (Dec 20, 2023)

Nestled within a tranquil cul-de-sac, this contemporary double brick duplex welcomes you with its prime rear north-facing orientation. Revel in the generously proportioned interiors that seamlessly blend modernity with the tranquillity of lush surroundings and an abundance of natural light.

- Effortless maintenance with elegant tiled floors, high ceilings and energy efficient downlights.
- Open-plan living and dining areas that effortlessly extend to the outdoor spaces.
- Expansive lower-level rumpus room, ideal for a home office or separate studio.
- A sun-soaked terrace and a level garden surrounded by well-established greenery.
- The stylish Smeg kitchen boasts 40mm stone countertops and a gas stove.
- Four spacious bedrooms, each with ample built-in wardrobes, one offering a private balcony.
- A master bedroom with an ensuite, two large family bathrooms, and a convenient guest

Property ID: L25424928

Property Type: House

Garages: 1

John Ellis

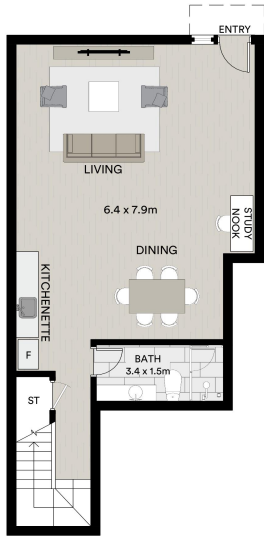
0413806807

john.ellis@cityliving.rh.com.au

powder room.

- Enjoy year-round comfort with ducted air conditioning and secure internal access to the automated garage.
- Stroll to the picturesque Beaman Park, and find schools and the vibrant Earlwood Village nearby.
- Just moments away from the shops, cafes, and excellent city transport options in Dulwich Hill.

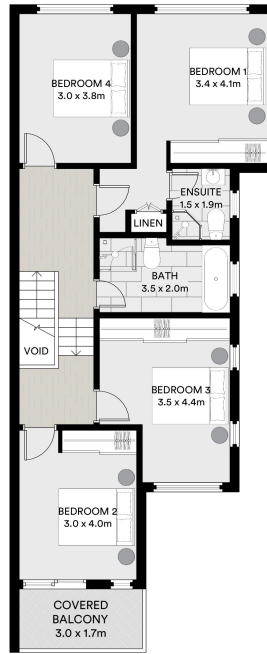
This enticing property offers a harmonious blend of modern convenience and the natural beauty of Cooks River parklands, making it the ideal home for those seeking a serene yet well-connected lifestyle.



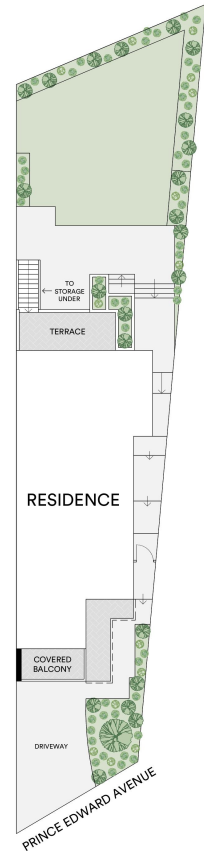
LOWER LEVEL
(STUDIO/GUEST)



ENTRY LEVEL



UPPER LEVEL



All information contained in this document is from sources we believe to be accurate, however we cannot guarantee its accuracy. Interested persons should make and rely on their own enquiries in relation to measurements, dimensions, layout, furniture and descriptions.