



Exceptional waterfront residence!



2



2



1

404/42 Refinery Drive, Pyrmont

Sold for \$2,950,000 (Nov 12, 2024)

Ownership rarely changes in this waterfront low-rise apartment building at Regatta Wharf.

Unquestionably one of the finest residences in the exclusive solander, a prestigious display of architectural design and flawless contemporary finishes. Located on the waterfront with a stunning North eastern aspect showcasing immediate harbour views, natural light, and summer breezes, create an ambience, perfect for living and entertaining.

Luxurious in design and quality this incredible residence offering deluxe marble bathrooms, gourmet kitchen featuring stone bench tops with European appliances.

Features:

- Highlights include alfresco terrace with spectacular water views
- Spacious and practical floor plan
- Ducted air conditioning
- Timber flooring and plush carpets in the bedrooms

Property ID: L28342822

Property Type: Apartment

Garages: 1

John Ellis

0413806807

john.ellis@cityliving.rh.com.au

- LED lighting throughout
- An abundance of storage
- Two marble bathrooms
- Secure car space plus two storage
- Quality appliances, fixtures and fittings
- Regatta Wharf resort facilities including; indoor pool, gym, spa & sauna
- Jacksons Landing recreation facilities

Fabulous waterfront location within walking distance to the fish markets, restaurants, shopping, transport and CBD. Easy access to Anzac and Harbour Bridge. Resort style facilities with indoor heated pool, steam room, gymnasium, meeting room, tennis courts and 24 hour security on site. Abundant foreshore walks and parklands in pet friendly community. Space and quality not often found in two bedroom properties, this is certainly a unique offering.

Outgoings (approx.)

Strata \$4,001p/q

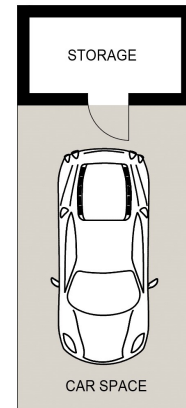
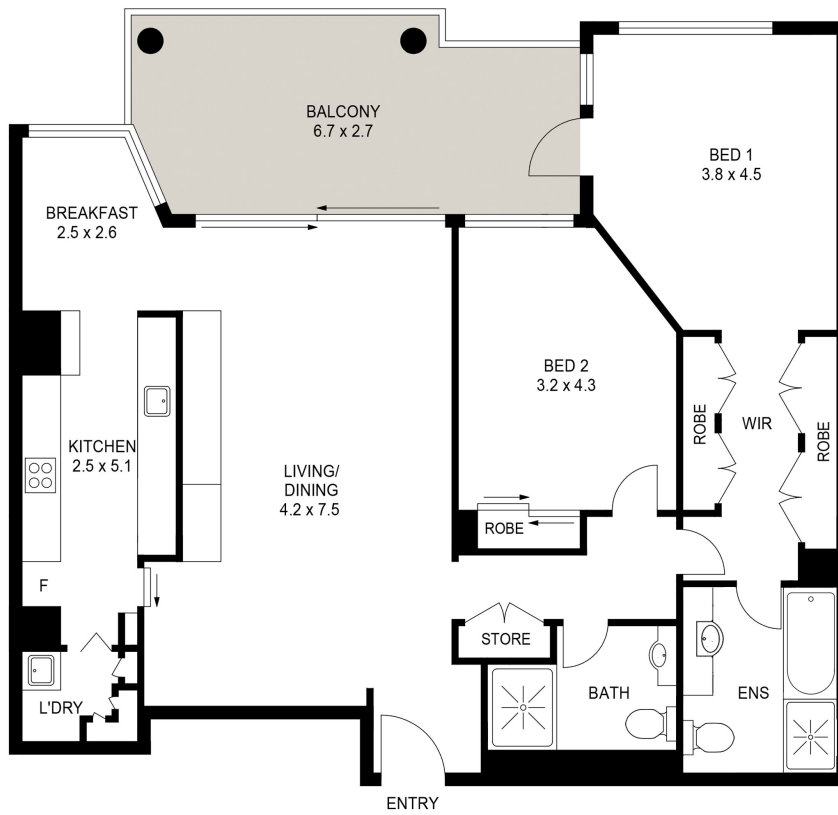
Water \$172p/q

Council \$295p/q

Size (approx.)

Apartment Living 130sqm

Title on Title 145sqm



404/42 Refinery Drive
PYRMONT

Raine & Horne
City Living

PLANS SHOWN ONLY INDICATIVE OF LAYOUT. DIMENSIONS ARE APPROXIMATE.