



## Modern Family Retreat



4



2



2

**21/40-42 Henley Road, Homebush West**

**Auctioned for \$955,000 (Aug 03, 2024)**

Boasting an abundance of space in a peaceful tranquil setting, this contemporary four bedroom residence will accommodate the largest of families in comfort.

Showcasing high quality finishes and stunning architecture, it caters to those seeking a stylish low maintenance lifestyle. Perfectly positioned just moments away from Hudson Park, Flemington train station and markets and the myriad of shops, cafes, restaurants that line The Crescent you have all that you need at your fingertips.

### Features:

- Perfect due North aspect on the top floor of a well maintained complex
- Light filled open plan living with seamless outdoor entertaining
- Four generously proportioned bedrooms, all with built-in wardrobes
- Master bedroom with walk-in wardrobe and ensuite
- Stylish chef's kitchen with brand new stainless steel appliances and stone benchtops

**Property ID:** L29192307

**Property Type:** Apartment

**Garages:** 2

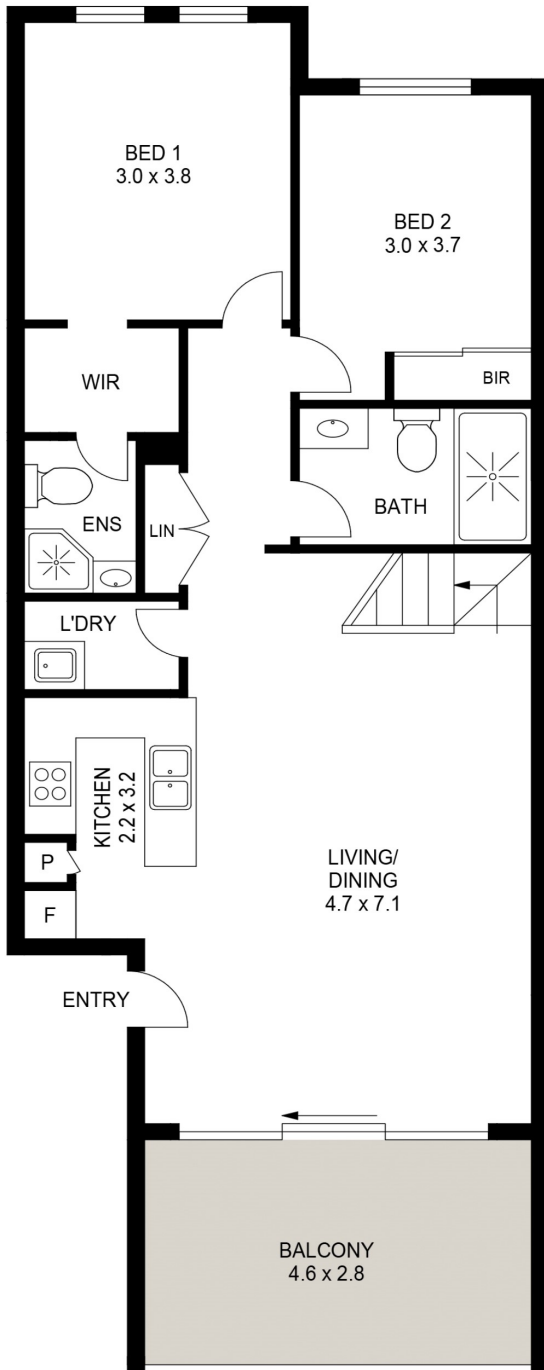
**Robert Lee**

0424022055

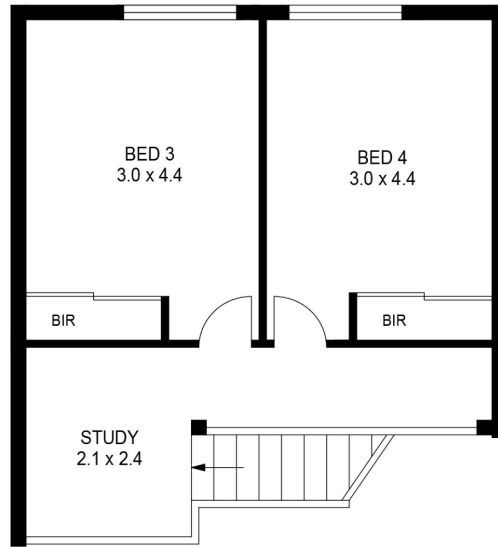
Robert.Lee@cityliving.rh.com.au

- Two ultra-modern bathrooms, large internal laundry
- Dedicated study or home office
- LED lighting and new timber floors and carpets
- Secure undercover parking for two cars

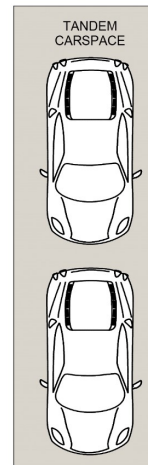
Embrace an ultra convenient lifestyle with easy access to shops, trains station, schools, & parks with Bi-Centennial Park and Olympic Park just moments away.



GROUND FLOOR



UPPER FLOOR



21/40-42 Henley Road  
**HOME BUSH WEST**

**Raine & Horne**  
City Living

PLANS SHOWN ONLY INDICATIVE OF LAYOUT. DIMENSIONS ARE APPROXIMATE.