



Timeless Waterfront Charm



3



2



2

Level 8/24 Refinery Drive, Pyrmont

\$1,700 per week

Nestled privately on the waterfront with breathtaking views of Sydney Harbour, this beautiful three-bedroom apartment offers a bright, sun-filled retreat that radiates comfort and serenity. Located in the highly sought-after Bridgeview building, this north-west facing home perfectly combines elegant sophistication with contemporary family living.

Please note, the lift is currently being replaced and will be unavailable for the month of July

Features:

Unfurnished

Private and quiet with only two apartments per floor

Intuitive configuration with open entertaining area

Large entertainment terrace area plus second balcony

Modern Caesar Stone kitchen, Smeg gas appliances

LED downlights and blinds throughout property

Property ID: R3155882
Property Type: Apartment
Garages: 2

James Astor
 0407 449 815
 James.Astor@cityliving.rh.com.au

Sunny master with en-suite, and walk-in wardrobe

Reverse cycle ducted air conditioning throughout

Double side-by-side car spaces plus storage cage

With access to two pools, spa, gym, and two tennis courts

What you will love!

Set within the prestigious Jacksons Landing Estate, this residence offers access to exceptional resort-style amenities including a heated indoor pool, fully equipped gym, tennis courts, and around-the-clock security. Perfectly positioned on the water's edge, it's just a short stroll to vibrant restaurants, cosy cafés, The Star Casino, the iconic Fish Market, and the CBD.

What you need to know!

Availability: 04/07/2025

Disabled access: Yes

Laundry facilities: Internal

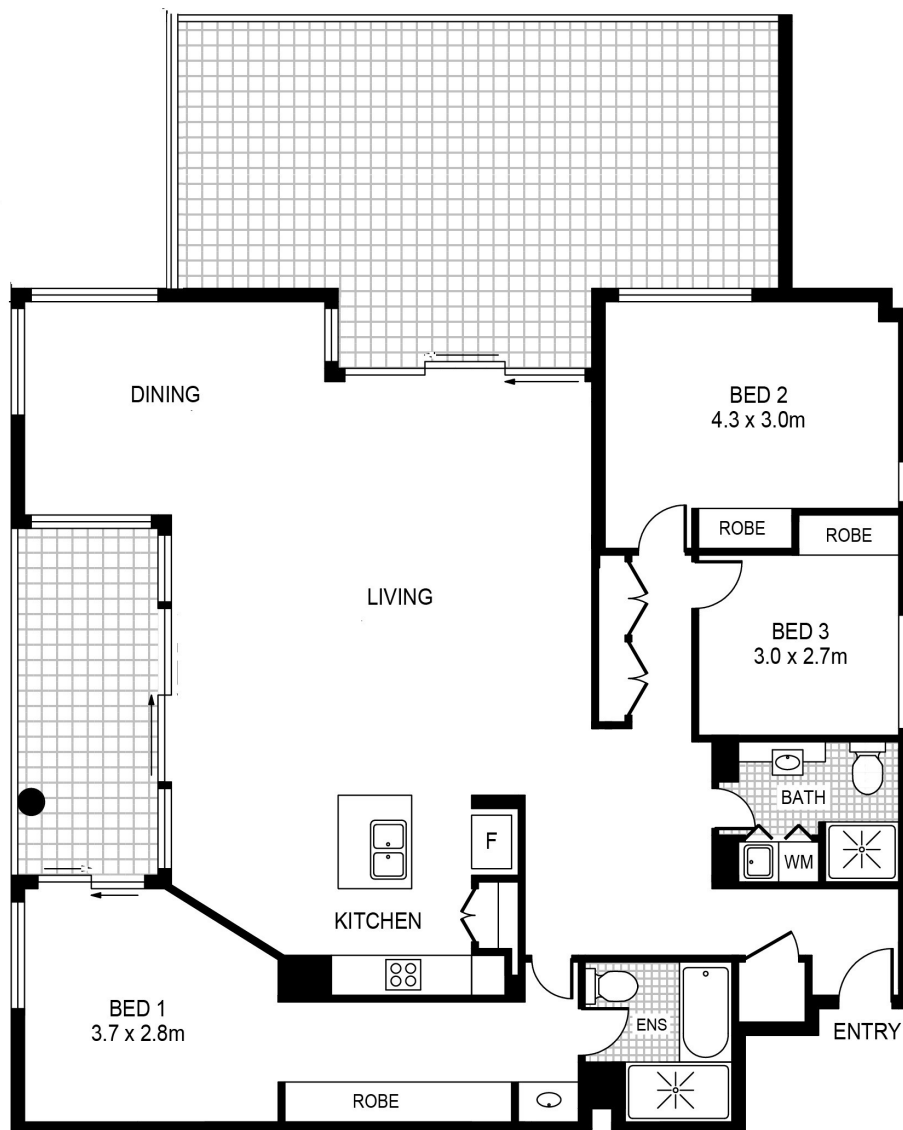
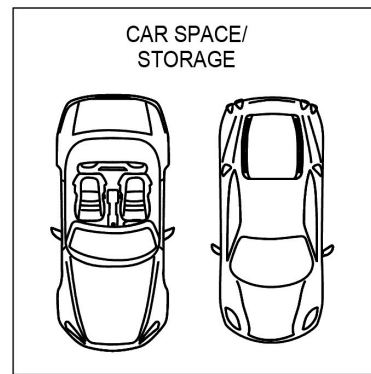
Parking: Two secure car spaces

Cooking: Gas stovetop and electric oven

Unfurnished/Furnished: Unfurnished

Heating or cooling: Reverse cycle ducted air conditioning

Contact Raine & Horne City Living on 8586 7800 to arrange an inspection.



24 Refinery Drive
PYRMONT

Raine & Horne
City Living

PLANS SHOWN ONLY INDICATIVE OF LAYOUT. DIMENSIONS ARE APPROXIMATE.