



SOLD BY KALANEY CHE



1503/22 Cambridge Street, Epping

Sold

This one bedroom plus study apartment offers an excellent layout with spacious open plan design, good natural light, and adjacent district views. Contemporary urban living in the sought-after complex Poly Horizon.

Features:

- Spacious living area with timber floor
- Additional study space with potential bedroom alterations
- Generous bedroom with built-in robes
- Luxurious bathroom with tile throughout
- Well-equipped kitchen with European stainless-steel stove and integrated dishwasher
- Internal laundry with dryer
- One allocated storage cage

Property ID: L19537874

Property Type: Apartment

Kalaney Che

0422 273 658

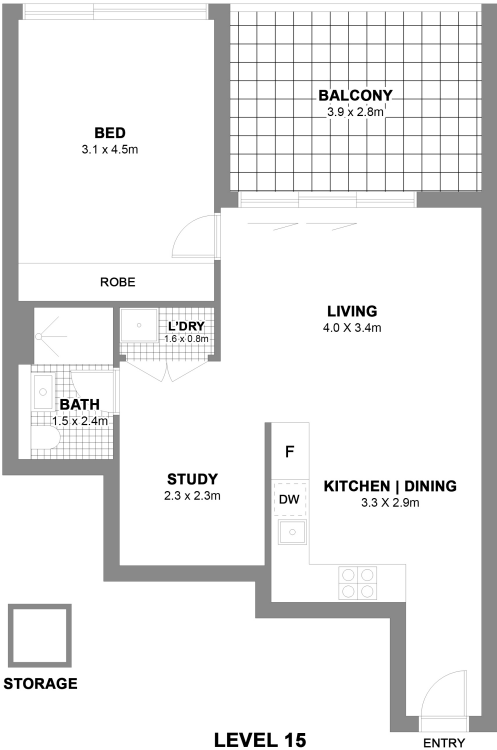
kalaney.che@rhodes.rh.com.au

- Air-conditioning system
- Security intercom system and secure building access
- Short Walking distance to Epping train Station
- Shopping at doorstep

Don't wait to call our friendly team now for more information.

Disclaimer: All information contained herein is gathered from sources we believe to be reliable; we cannot guarantee accuracy. Any interested parties should rely on their own enquiries.

| APPROXIMATE AREAS | |
|-------------------|---------------|
| INTERNAL&BALCONY | 61 sqm |
| STORAGE | 1 sqm |
| TOTAL | 62 sqm |



EPPING 1503/22 CAMBRIDGE STREET

Scale in metres. Indicative only. All information contained herein is obtained from sources we believe to be accurate. We cannot guarantee its accuracy. Interested persons should make and rely on their own enquiries.



Raine & Horne®