



Contemporary One Bed with Study in Meadowbank



403/123 Bowden St, Meadowbank

New Listing Contact Agent

New release development (Completed August 2020): 1 Bedroom + Study, 5 unit available.

Situated in "The Bradfield", this modern apartment is the perfect first home or investment opportunity. Perfectly positioned in an east aspect with plenty of natural light, this unique oversized apartment offers a contemporary lifestyle with a spacious in/outdoor design complete with contemporary neutral interiors that truly stand out in luxury. Located just minutes away from the Meadowbank train station, ferry terminal, shops and restaurants, it's a truly unique position in a growing suburb.

Features:

- Contemporary living and study zones flow onto a sun-drenched balcony
- Gourmet kitchen with gas cooktop, two-tiered benchtop and a granite splashback
- Carpeted bedroom with built-in robe & balcony access via full sliding doors.
- Fully tiled large bathroom with contemporary finishes
- Euro-style laundry, common rooftop courtyard

Property ID: L25295410

Property Type: Apartment

Carports: 1

Angell Yang

0434 259 336

angell.yang@rhodes.rh.com.au

- East facing with the perfect natural lighting
- Access to a unique harbour suburb lifestyle
- Intercom entry, ducted air con, single basement car space and visitor parking
- Walking distance to Meadowbank ferry terminal, train terminal & abundance of local shops

Proposed Strata Rates (Estimated, all approx. from Strata opt): \$680-\$750 per quarter.

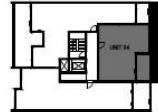
Don't wait to call our friendly team now for more information.

Disclaimer: All information contained herein is gathered from sources we believe to be reliable; we cannot guarantee accuracy. Any interested parties should rely on their own enquiries.



1 BED, 1 BATH + STUDY

| | |
|-------------------|------------------------|
| INTERNAL AREA | 50m ² |
| EXTERNAL AREA | 8m ² |
| TOTAL AREA | 58m² |



BELLA IKEA
DEVELOPMENTS PTY LTD

The information and images in this document are intended as an introduction to the general content of the project only and interested parties should rely on their own enquiries. The Developer expressly disclaims any liability and responsibility (except to the extent that liability under statute or by operation of law cannot be excluded) to any person for any loss, liability, damage or expense arising directly or indirectly from or connected in any way with any use of or reliance on the information contained within this document. All computer generated images in this document are artist's impressions only and the final form of the project is subject to change.