



Sold By Alvin Cai & Kalaney Che



2



2



1

1202/6-10 Charles Street, Parramatta

Sold

This contemporary apartment is situated in the bustling center of Parramatta's CBD, boasting breathtaking panoramas of the Sydney skyline. It provides an unparalleled living experience with its proximity to key transportation links such as the Parramatta train station, Rivercat ferry, and the bus interchange hub, free city 'Loop' bus and the soon-to-be-completed Robin Thomas Light Rail.

Additionally, it's just a stone's throw away from the Parramatta Square, Parramatta Aquatic and Leisure Centre, Westfield Shopping Centre, the lush Parramatta Park, esteemed educational institutions, a lively nightlife scene, and an array of celebrated dining establishments and coffee shops.

Features:

- Airy and expansive living/dining area that opens up to the balcony which showcasing cityscape views
- A/C in living area and every rooms
- Modern kitchen equipped with a gas range, stainless-steel gadgets, stone worktop, and extensive storage

Property ID: L27955104

Property Type: Apartment

Carports: 1

Kalaney Che

0422 273 658

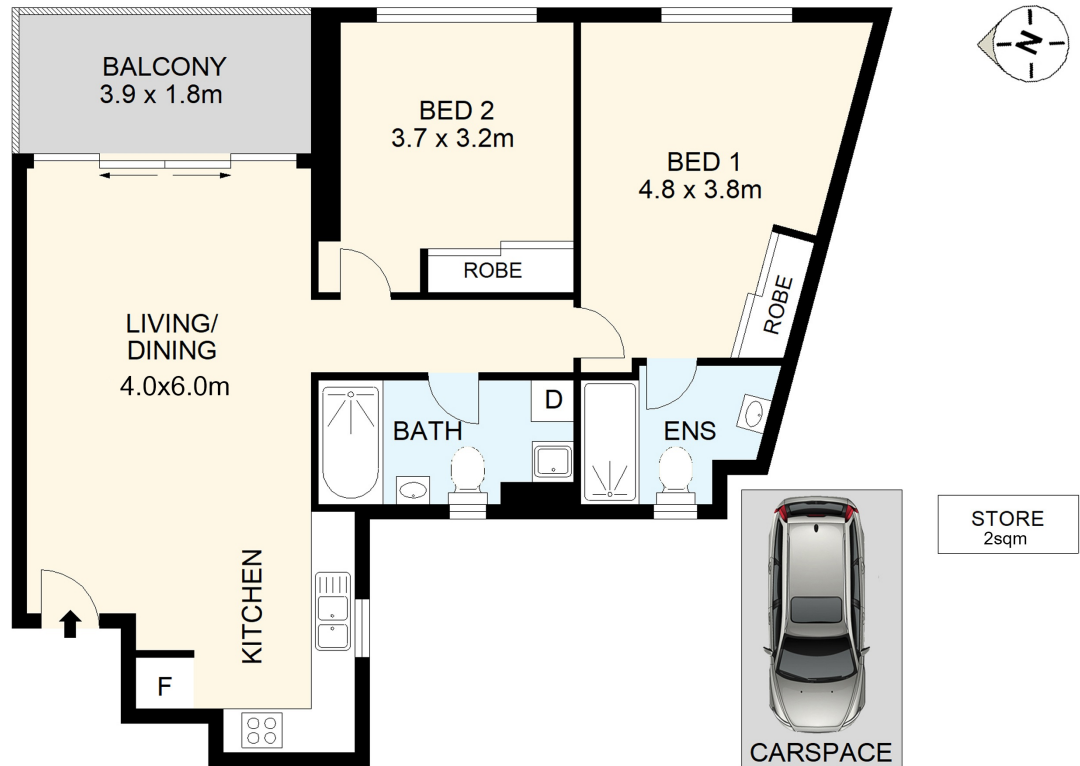
kalaney.che@rhodes.rh.com.au

- Two spacious bedrooms with built in wardrobe, outlooks over Sydney's urban panorama, the master featuring an ensuite
- Two sleek bathrooms with full-height tiling, with windows for natural light and air flow
- Dedicated laundry space with an included dryer
- Climate-controlled comfort with split system air-conditioning
- Secure entry with an intercom system
- Secured underground car space with additional storage unit
- Welcoming community environment with a play area for children and landscaped gardens
- Parramatta Public School and Arthur Philip High School just across the road

Don't wait to call our friendly team now for more information.

In case street parking is not available, the best parking for inspection is Hassall Street Car Park (22 Hassall Street, Parramatta) which is just 150 meters away. The weekend rate as of 04/06/2024 is \$2/day.

Disclaimer: All information contained herein is gathered from sources we believe to be reliable; we cannot guarantee accuracy. Any interested parties should rely on their own enquiries.



Raine&Horne®

DISCLAIMER: THIS IS FOR ILLUSTRATIVE PURPOSES ONLY.
ALL DIMENSIONS ARE APPROXIMATE AND IT DOES NOT
CONSTITUTE PART OF ANY LEGAL DOCUMENTS.

ADDRESS:

1202/6-10 Charles Street, Parramatta NSW 2150