



**SOLD BY KALANEY CHE**



1



1



1

## 801/42 Shoreline Drive, Rhodes

**Sold for \$690,000 (Sep 18, 2024)**

Situated with an east-facing aspect, this 1-bedroom apartment features abundant natural light in its open-plan living area. Nestled by the waterfront within the esteemed Azure complex, known for its high-end finishes and thoughtful design, this residence embodies comfort and convenience in Rhodes.

- Expansive living/dining area seamlessly flow into the large balcony
- Timber floor throughout, adding a touch of natural warmth and elegance
- Freshly painted throughout with brand new blinds
- Ducted system air conditioning throughout
- Modern kitchen boasting stainless-steel appliances, gas stovetop, oven, and dishwasher, completed with an elegant kitchen island
- One generous sized bedroom with built-in wardrobe and direct access to balcony
- Spacious bathroom tiled to ceiling with separated frameless shower screen

**Property ID:** L28921000

**Property Type:** Apartment

**Carports:** 1

**Kalaney Che**

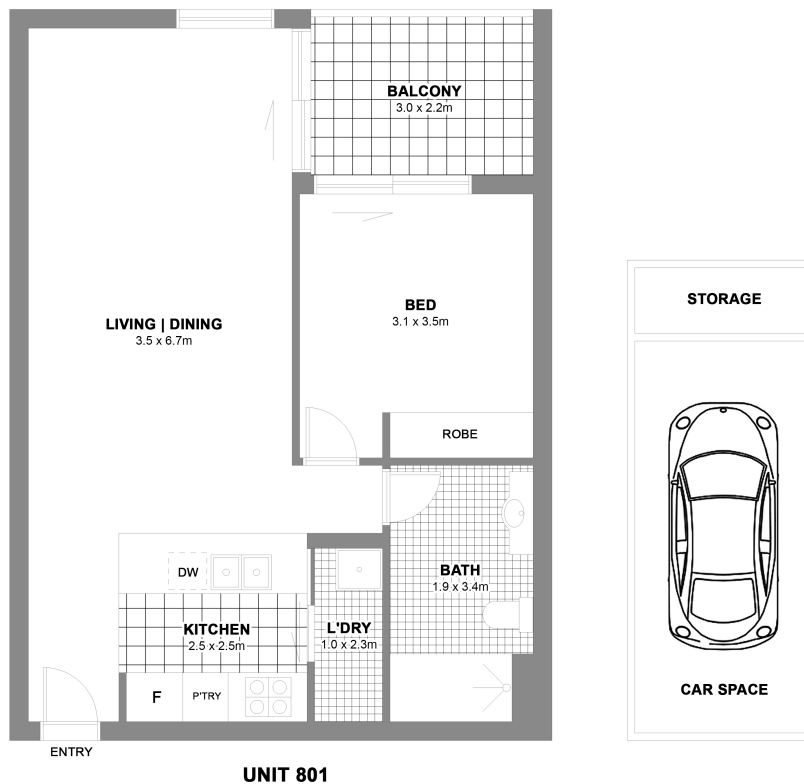
0422 273 658

kalaney.che@rhodes.rh.com.au

- Internal laundry with ample storage space
- Secure building with intercom system and lift access
- One allocated underground parking space and storage cage
- Moments from Rhodes train station, shopping center, parkland, and waterfronts
- Low Maintenance with Strata Levy \$860 per quarter approximately

Don't wait to call our friendly team now for more information.

Disclaimer: All information contained herein is gathered from sources we believe to be reliable; we cannot guarantee accuracy. Any interested parties should rely on their own enquiries.



UNIT 801

## RHODES 801/42 SHORELINE DRIVE

Scale in metres. Indicative only. All information contained herein is obtained from sources we believe to be accurate. We cannot guarantee its accuracy. Interested persons should make and rely on their own enquiries.



# Raine&Horne®