






**DISCOVER COMFORT AND CONVENIENCE
- SORELL**



 3
  1
  6

11 Pawleena Road, Sorell

Sold

Welcome to this immaculately presented 3 bedroom, 1-bathroom brick home sitting on a large 1521m2 block, built in 1982. Boasting a perfect blend of comfort and practicality, this residence offers a great lifestyle for everyone.

Timber kitchen with ample storage, generous bench space, excellent family/dining room adjoining which would accommodate large family gatherings. Glass slider opens to the rear yard.

The formal lounge is filled with light and sun, and has the convenience of reverse cycle Aircon and heating, plus the ambience of an inbuilt woodfire for winter nights.

Features

- . 3 large double bedrooms all with built-ins
- . separate bathroom has bath, sep shower & vanity unit
- . separate laundry with access to rear yard
- . separate wc

Property ID:	L26050177
Property Type:	House
Building / Floor Area:	134
Garages:	2
Open Parking:	4
Land Area:	1521.0 sqm

Debbie Allanby
 0428 127 127
debbie.allanby@sorell.rh.com.au

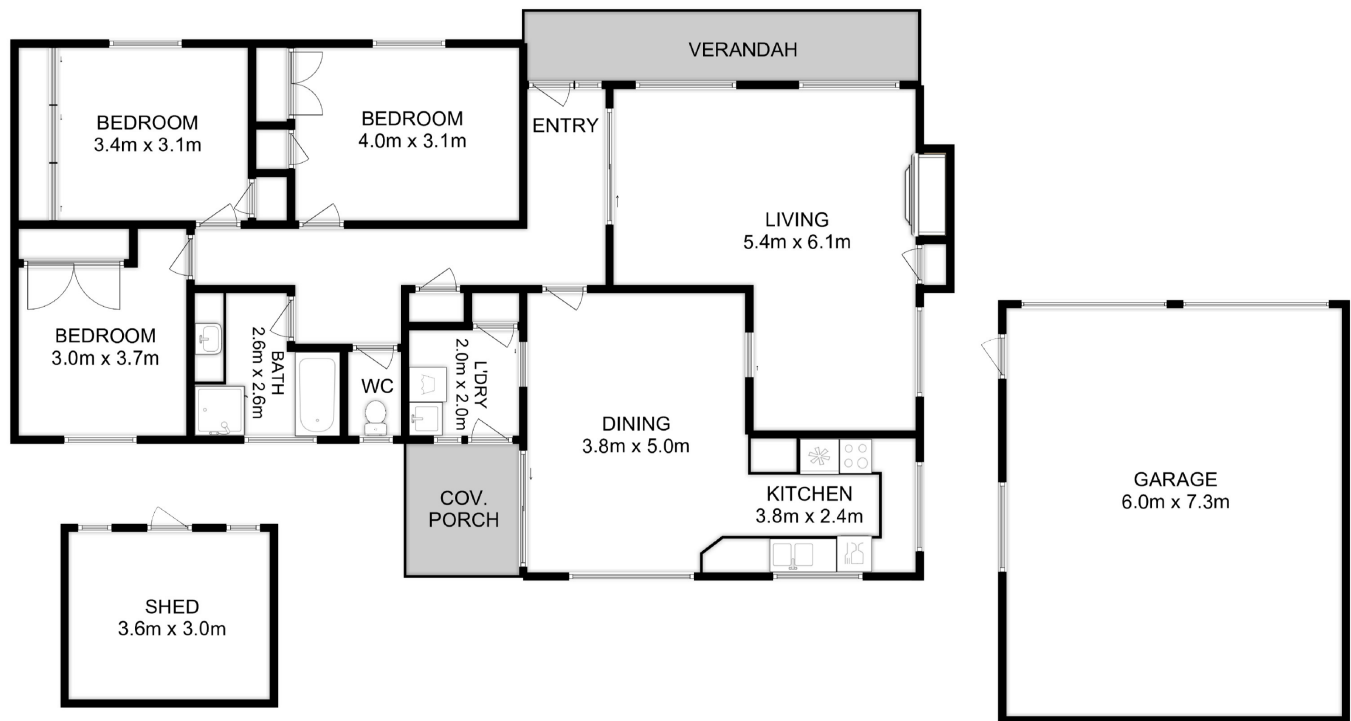
- . town water and sewerage
- . drive onto double garage with plenty of off street parking
- . beautiful beaches, golf courses all at your fingertips

This home has a thoughtful layout, the expansive rear yard is a true highlight with garden shed, raised vegetable beds and a utility area to the side, marking it a versatile space for gardening, outdoor activities for the children or extra parking for caravan, boat etc.

Situated in the township of Sorell, this home offers unparalleled convenience with amenities close by. Put on your walking shoes and take a leisurely stroll to the shopping centre.

With easy access to the Tasman Highway means you are only 25 minutes to Hobart CBD, making commuting a breeze.

Don't miss out on this opportunity to view, please call the Team of Debbie and Danny to show you through 11 Pawleena Road, Sorell.



All measurements are internal and approximate.
 This plan is a sketch for illustration, not valuation.
 Produced by Open2view.com

Total Approx. Floor Area : 130 sqm
 Total Approx. Outbuilding Area : 55 sqm